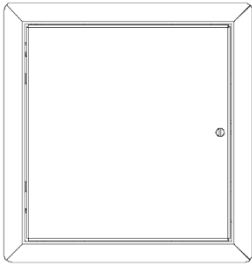


Architectural Access Door

Model(s): NT/NW/NP

GENERAL DESCRIPTION



Access Doors are designed and built for years of convenient and easy access to mechanical areas in commercial buildings.

Introduction + Safety

Please read the complete instructions carefully before beginning any work. To ensure proper installation and performance of the product, the following actions must be completed by the installing contractor. Failure to do so will affect product warranty

GENERAL SAFETY PRECAUTIONS Improper selection, installation, or use can cause personal injury or property damage. It is solely the responsibility of the user, through its own analysis to select products suitable for their specific application requirements, ensure they are properly maintained, and limit their use to its intended purpose. Follow proper local, state and federal regulations for proper installation and operation requirements.

Transportation + Storage

- Inspect all shipments and materials for missing or damaged components and hardware.
- Material must be stored in a clean, dry location.

Tools

- Screwdriver
- Keyhole Saw
- Fasteners

PREPARATION

1. Install a framed opening at specified location of access door.

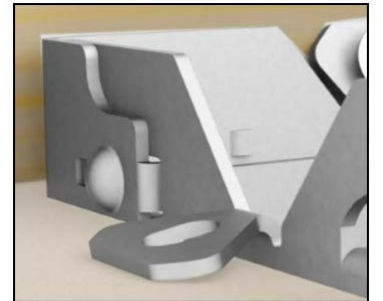
2. Opening dimensions should be 1/4" larger than catalog size of door, after wrapping studs with 5/8" type X (fire-resistant) gypsum board if necessary. Example: 12" x 12" door, opening should be 12-1/4" x 12-1/4". A notched-out area is required for the lock bolt cover.

INSTALLATION

1. Place the door into the opening. Flange should seat firmly against wall or ceiling surface.
2. Secure hinge side first. With door in open position, attach anchors through easy tabs. ①
3. Square up latch side and secure with anchors through easy tabs.
4. Secure remaining two sides by either:
 - a. Anchors through Easy Install Tabs.
 - b. Folding Easy Tab over. ②



①



②

OPERATION

Access doors are designed and built for years of dependable wall and ceiling access. Our access doors come standard with a paintable powder coat finish.

The basic components for door operation include latching and locking mechanism and hinges:

- Latch: Screwdriver operated cam latch is standard
- Hinge: Quickly and easily remove doors using the finger operated button snap hinges,

MAINTENANCE

- Access doors should be manually operated once a year to check performance.
- Lubricate moving parts such as hinges and latches with a silicone spray lube as required to maintain a smooth opening and closing of the door. Do not over grease. Do not use regular lubricating oil as it can attract dust and grit.
- Non-moving parts can be cleaned with a mild soap or dishwashing detergent and water solution.
- Gaskets can be cleaned with a clean, damp, lint-free cloth. Do not apply mineral oils, vinyl dressings, or other lubricants to the gasket as they can cause the gasket to break down over time.

QUESTIONS?

For more information on installation, repair or replacement, please visit www.Nystrom.com or call 800.547.2635.