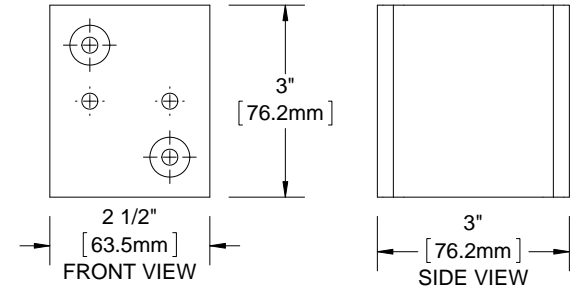
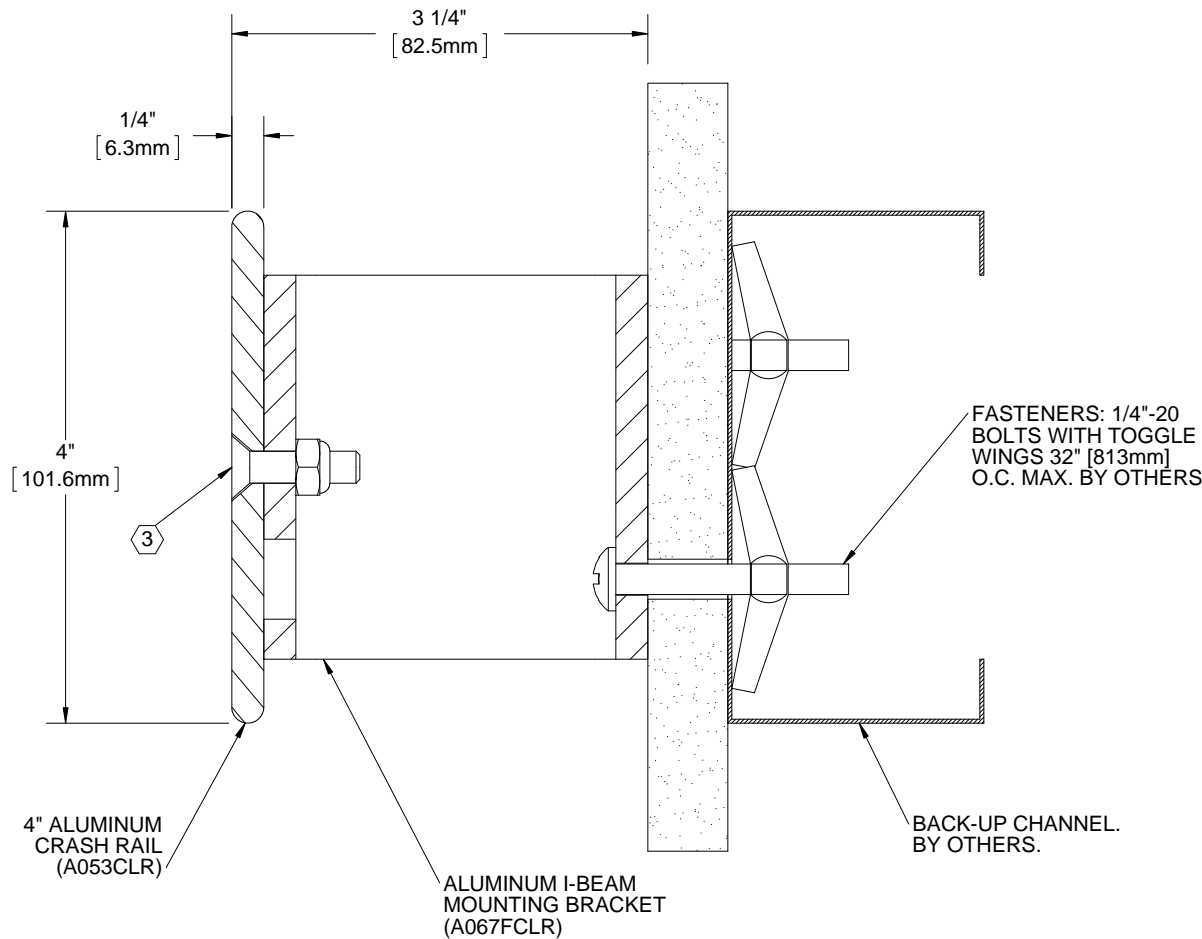


QUANTITY (FT)



3" I-BEAM BRACKET (A067FCLR)

**NOTES:**

- 1. MATERIAL: 6063-T5 ALUMINUM
- 2. FINISH: CLEAR ANODIZED
- ③ 1/4"-20 x 1" PHILLIPS FLAT HEAD STAINLESS STEEL SCREW (14201PFMS188) WITH LOCK NUT (1420NLN188), INCLUDED.
- 4. PROVIDED IN 12' CONTINUOUS LENGTHS, TO BE FIELD CUT AND DRILLED.
- 5. RETURNS AND CORNERS: PRE CUT AND DRILLED FOR FIELD INSTALLATION.  
END CAP: #CRAE4-BI3-EC  
OUTSIDE CORNER: #CRAE4-BI3-OC  
INSIDE CORNER: #CRAE4-BI3-IC
- 6. PARTITION COMPONENTS BY OTHERS.

PROJECT:					
ARCHITECT:					
CONTRACTOR:					
 9300 73rd Avenue North Minneapolis, MN 55428		TITLE: 4" ALUMINUM CRASH RAIL, EXTENDED, 3" I BEAM BRACKET, CLEAR ANODIZED FINISH			
		NAME	DATE	SIZE	DWG. NO.
DRAWN	DKL	11/26/13	A	CRAE4-BI3	A
RELEASED	PGE	11/26/13	WEIGHT: 1.7 LB/LF	SHEET 1 OF 1	