

## DOUBLE WING FLOORING INFILL SYSTEM

Model(s): DA

### GENERAL DESCRIPTION



Nystrom's Double Wing Flooring Infill System is designed to cover thermal expansion joint openings. Constructed of aluminum and designed to integrate with carpet, tile and VCT flooring, this system provides a minimal 1-1/2 inch sight line.

### Introduction + Safety

Please read the complete instructions carefully before beginning any work. To ensure proper installation and performance of the product, the following actions must be completed by the installing contractor. Failure to do so will affect product warranty.

**GENERAL SAFETY PRECAUTIONS** Improper selection, installation, or use can cause personal injury or property damage. It is solely the responsibility of the user, through its own analysis to select products suitable for their specific application requirements, ensure they are properly maintained, and limit their use to its intended purpose. Follow proper local, state and federal regulations for proper installation and operation requirements.

### Transportation + Storage

- Inspect all shipments and materials for missing or damaged components and hardware.
- Material must be stored in a clean, dry location.

## Preparation

- Locate the packing slip(s) and/or shop drawings.
- Verify that all products listed on the packing slip are included in the package.
- Check the products for damage. If products are damaged, report a freight claim immediately and leave the products in their packaging. If you sign for products without reporting damage you waive your right to a freight claim and will be responsible for their replacement cost.
- Read the instructions thoroughly before beginning installation.

## Tool List

- Electric drill
- Chop saw to cut product to length
- Tape measure
- Broom and dustpan or vacuum
- ¼” masonry bit
- Flash patch and utensils

## Included with Expansion Joint System

- Sleeve Anchors, 1/4 inch

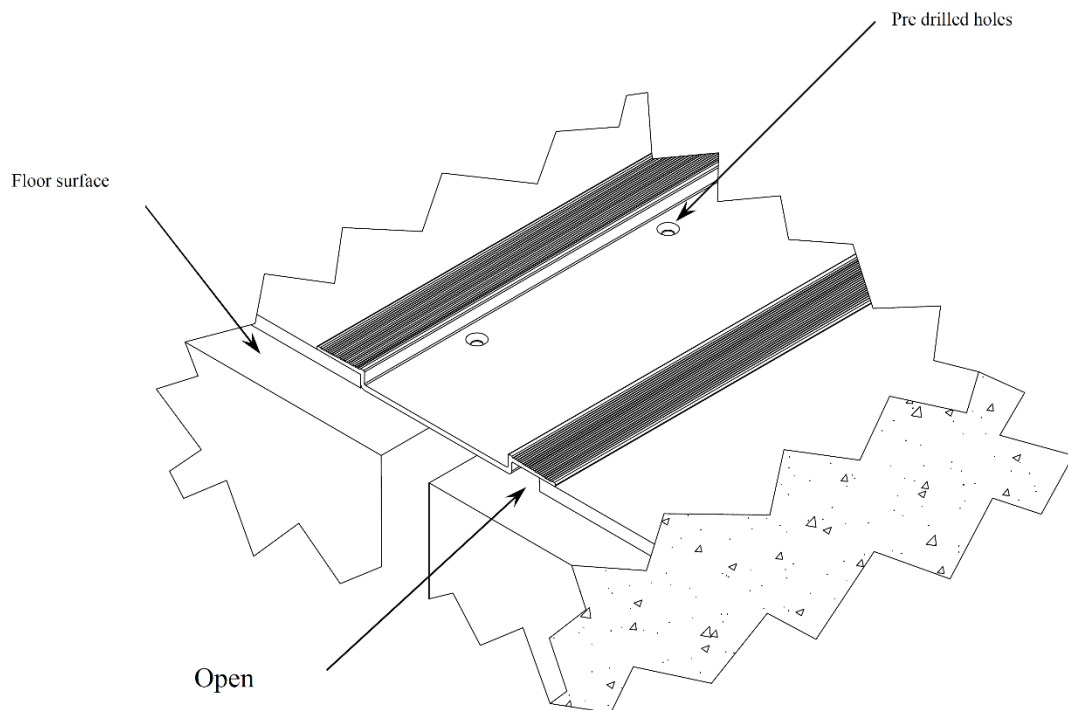
## Pre-Installation

1. Ensure that the floor is smooth. High spots should be ground down and low spots filled in. Make sure floor is clean by sweeping and/or vacuuming floor.

## INSTALLATION

1. Cut and fit expansion joints to required length, if installing more than 1 piece lay out entire run to insure proper alignment. Make sure that the anchors are at least 1-1/4” from floor gap wall.

2. Drill end holes first, this ensures that the expansion joint will not move and alignment with other joints is obtained. Expansions joints are supplied with predrilled holes (see diagram). Drill holes to a depth of 2-1/2" inches, using correct drill bit, 1/4" concrete drill bit.
3. Insert the assembled anchor into hole so the head of anchor is flush with top surface of expansion joint. Expand the anchor by tightening the head 2 to 3 turns.
4. Once anchors are in the end holes, drill remaining holes and install anchors.
5. Flash patch on anchored side and feather back 3"-6" to assure a smooth transition.
6. Cut in floor covering; make sure it abuts tightly to the edge of the wing on the fixed portion of expansion joint. The floor covering should extend only halfway under the unsecured wing (note open space in diagram).



## OPERATION

Expansion Joints are designed and built for years of dependable service.

## MAINTENANCE

- Annual inspections should be performed to make sure the system is still in position. Repair and/or replace as needed.

## QUESTIONS?

For more information on installation, repair or replacement, please visit [nystrom.com](http://nystrom.com)