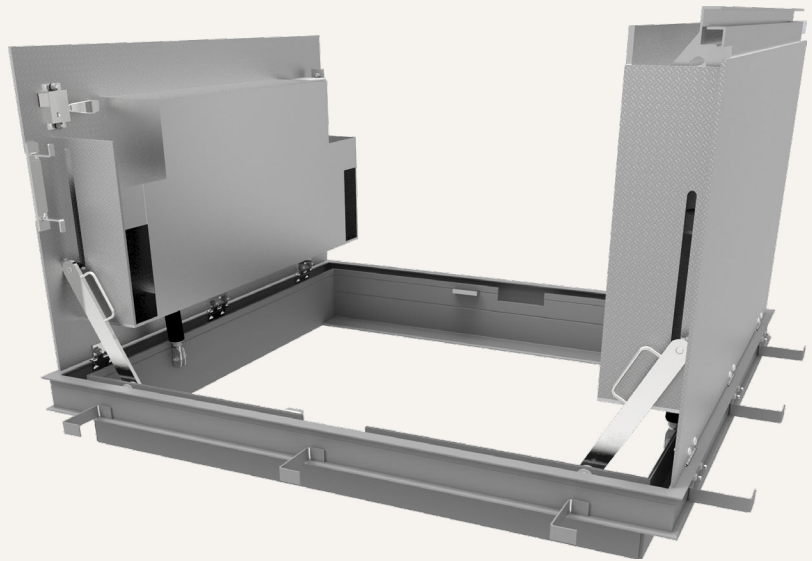


Drainable

FLOOR DOOR, H20

The H20 Drainable Floor Door is designed for infrequent, off street traffic in exterior or high moisture areas when liquid flow into the door is a concern. The frame is constructed with a gutter channel for water runoff into a drainage system.



FEATURES

VEHICLE LOAD Designed for exterior/wet environments and tested for H20 wheel load for infrequent, off-street traffic.

DRAINABLE FRAME Constructed with a gutter channel frame and drain hole for liquid removal.

DETAILS

LOAD H20 wheel load

MATERIAL

- Aluminum: 1/4 inch, mill finish with gray primer on exterior frame
- Steel: 3/16 inch, primed gray powder coat
- Stainless Steel: 3/16 inch, Type 304 or 316

COVER Diamond tread plate

FRAME Formed gutter frame with a 1-1/2 inch drain coupling welded under frame for pipe connection for water runoff

INSTALLATION Cast-In

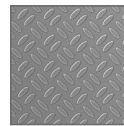
SPRING Coil type 17-7 Stainless Steel enclosed in Type 316 Stainless Steel telescopic tubes

HINGES Heavy duty Type 316 Stainless Steel

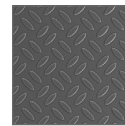
HOLD OPEN ARM Type 316 Stainless Steel automatic hold open arm locks cover in open position

LATCH Slam latch Type 316 Stainless Steel with inside lever handle, includes removable 5/16 inch steel square "L" handle and threaded plug

MATERIALS



Aluminum

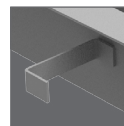


Primed Steel



Stainless Steel

INSTALLATION



Cast-in

ORDER GUIDE

MODEL	MATERIAL	WIDTH	X	LENGTH	COVER	AL	-	OPTIONS
FDDH			X			AL	-	
	A 1/4" Aluminum	Standard Sizes (W x L)			S Single Door			Locks Finishes Gaskets Operation Safety Skirting Other
	P 3/16" Steel, Primed	Single Door 24" x 24"		Double Door 48" x 48"	D Double Door			
	S 3/16" Stainless Steel, Type 304	30" x 36"		48" x 72"				
	V 3/16" Stainless Steel, Type 316	36" x 36" 42" x 42"		60" x 60"				