

Drainable

LARGE EQUIPMENT HATCH, H20



The H20 load rated large equipment hatch is designed for infrequent, off-street traffic where moisture or liquid flow into the door is a concern. The frame is constructed with a gutter channel for water runoff into a drainage system.

FEATURES

MAXIMUM CLEAR OPENING AREA These double door units were designed for large equipment installation and maintenance access. They are the largest doors with an H20 load rating available in the market.

DRAINABLE FRAME Constructed with a gutter channel frame and drain hole for liquid removal.

DETAILS

LOAD H20 wheel load

MATERIAL Aluminum: 1/4 inch, mill finish with gray primer on exterior frame

COVER Diamond tread plate

FRAME Drainable gutter frame with integral 1 inch anchor flange, EPDM gasket and 1-1/2 inch drain coupling

INSTALLATION Cast-In

SPRING Enclosed coil, Type 17-7 Stainless Steel

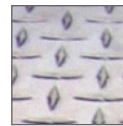
HINGES Heavy duty Type 316 Stainless Steel

HOLD OPEN ARM Type 316 Stainless Steel automatic hold open arm locks cover in open position

LATCH Slam latch Type 316 Stainless Steel with inside lever handle, includes removable threaded plug and key

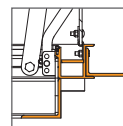
OPTIONS Padlock Hasps, Finishes, Safety Grates, Safety Nets, Safety Rails, Skirting

MATERIALS



Aluminum

FRAME



Gutter Frame
Cast-In

ORDER GUIDE

MODEL	WIDTH	X	LENGTH
FDOHA		X	DFL
Standard Sizes (W x L)			
Double Door			
48" x 80" to 48" x 120"			
60" x 80" to 60" x 120"			
96" x 80" to 96" x 120"			
108" x 48" to 108" x 120"			

Additional sizes available, call for more information.