

Drainable

FLOOR DOOR, 300PSF

This Drainable Floor Door is intended for standard-duty exterior or high moisture areas where liquid flow is required. The frame is constructed with a gutter channel for runoff into a drainage system and includes an EDPM gasket.

FEATURES

LARGEST CLEAR OPENING The components are engineered with a maximum clear opening.

LIGHTER WEIGHT The streamlined design utilizes the spring housing as a door stiffener, resulting in lighter covers.

DETAILS

LOAD 300 psf live load

MATERIAL

- Aluminum: 1/4 inch, mill finish, gray primer on exterior frame (for cast-in only)
- Steel: 3/16 inch, gray primer
- Stainless Steel: 3/16 inch, Type 304 or Type 316, bead blasted

COVER Diamond tread plate

FRAME Drainable gutter frame with integral 1 inch anchor flange, EDPM gasket and 1-1/2 inch drain coupling

INSTALLATION Cast In or Bolt-In

SPRING Enclosed coil, Type 17-7 Stainless Steel

HINGES Heavy duty Type 316 Stainless Steel

HOLD OPEN ARM Type 316 Stainless Steel automatic hold open arm locks cover in open position

LATCH Slam latch Type 316 Stainless Steel with inside lever handle, includes removable threaded plug and key

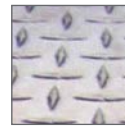
OPTIONS Padlock Hasps, Locks, Finishes, Safety Grates, Safety Nets, Safety Rails, Skirting

ORDER GUIDE

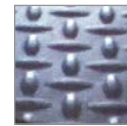
MODEL	MATERIAL	WIDTH	X	LENGTH	COVER	INSTALL
FDDP			X			—
	A 1/4" Aluminum	Standard Sizes (W x L)			S Single Door	FL Aluminum
	P 3/16" Steel	Single Door	Double Door		D Double Door	WL Steel or Stainless Steel
	S 3/16" Stainless Steel, Type 304	24" x 24"	48" x 48"			
	V 3/16" Stainless Steel, Type 316	30" x 36"	48" x 72"			
		36" x 36"	60" x 60"			
		42" x 42"				
		48" x 48"				

Additional sizes available, call for more information.

MATERIALS



Aluminum

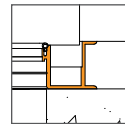


Primed Steel

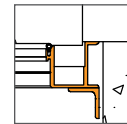


Stainless Steel

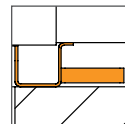
FRAME



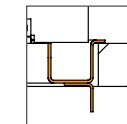
Gutter Frame
Cast-in Aluminum



Gutter Frame
Bolt-in Aluminum



Gutter Frame
Cast-in Steel or
Stainless Steel



Gutter Frame
Bolt-in Steel or
Stainless Steel