

# Dual

## COMPRESSION SEAL (PES)

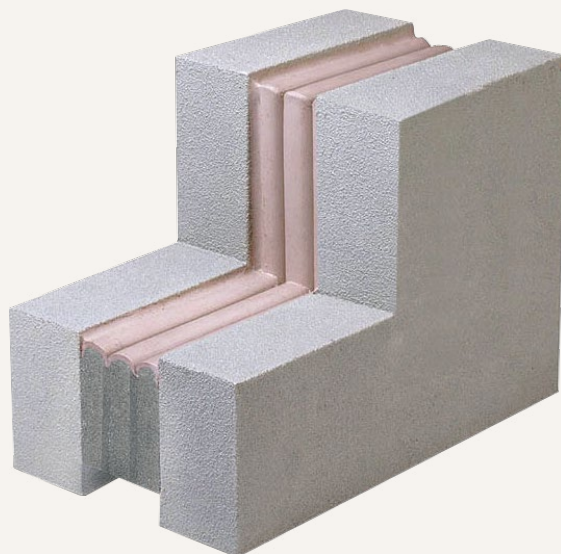
Premium seal for high-stress joints. The Dual Compression Seal is precompressed and is an aesthetically versatile option for high-stress joints. Conforming to joint gap irregularities, it is held in place by the expanding foam and field-installed silicone caulk. It is watertight, resists hurricane force wind, wax free, UV stable with low and high temperature stability.

### FEATURES

**HURRICANE TOUGH** The primary and secondary seal creates a premium watertight assembly that will hold up in tough environments.

**COLOR COORDINATING** Add a complementary color to your building with one of the 26 available pre-tinted silicone colors.

**OPEN CELL POLYURETHANE** This wax free compression seal foam is infused with a water based non-drying acrylic dispersion.



### DETAILS

**MATERIAL** Silicone bellow with foam sealant

**SIZE** 1/2 inch to 8 inches

**LENGTH** 6.56 linear feet (2 meter)

**APPLICATION** Interior or Exterior

**INSTALLATION** Wall

**COLORS** Dow 790 or Pecora 890

**OPTIONS** Terminations and Transitions

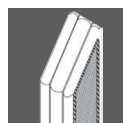
**MOVEMENT** +/-25% (Total 50%)

### MATERIALS

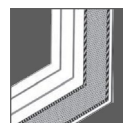


Silicone Bellow

### OPTIONS



Terminations



Transitions

### MODELS

MODEL	JOINT SIZE at mean T° F	SEAL DEPTH	MODEL	JOINT SIZE at mean T° F	SEAL DEPTH
PES-050	1/2" (12mm)	1-1/2" (40mm)	PES-400	4" (100mm)	4-3/4" (120mm)
PES-075	3/4" (20mm)	1-1/2" (40mm)	PES-500	5" (125mm)	5-1/2" (140mm)
PES-100	1" (25mm)	1-3/4" (45mm)	PES-600	6" (150mm)	6" (150mm)
PES-200	2" (50mm)	2-1/2" (65mm)	PES-700	7" (175mm)	7" (175mm)
PES-300	3" (75mm)	3-1/2" (90mm)	PES-800	8" (200mm)	8" (200mm)

Notes : Sizes under 1-1/2" (40mm) are manufactured with a single silicone face bellow. Larger sizes up to 8" (200mm) are manufactured with multiple bellows.

Additional sizes available in 1/4 inch increments from 1 inch to 6 inches, 1/2 inch increments from 6 inches to 8 inches.