

Roof Continuous

CURB BELLOW SYSTEM (EWCF/W)

Nystrom's Continuous Roof Curb Bellows System is an effective, flexible joint closure for a wide variety of standard and special applications. The system is designed for a continuous length for limited or no splices along the joint. The EWCF covers are 60-mil thick, reinforced EPDM bellows widely used in curb applications.



FEATURES

CURB APPLICATION Designed for flat roof systems when a curb is required.

CONTINUOUS LENGTH For straight runs, up to 100 linear feet, no splices are required. Eliminates opportunities for water leaks at splice points.

EASY TRANSITIONS Water and weather tight factory manufactured transitions available.

DETAILS

MATERIAL EPDM Membrane

MOVEMENT

- Thermal: Horizontal and Vertical
- Seismic: Lateral Shear

MOUNTING Surface

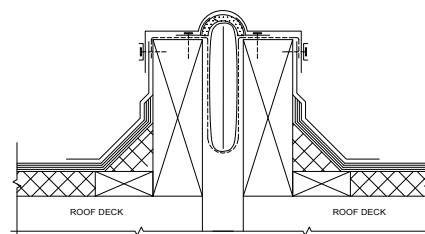
JOINT SIZE 1 inch to 20 inches

LENGTH 50 or 100 Linear Foot Roll

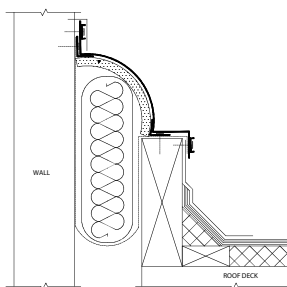
APPLICATION Exterior

INSTALLATION Roof

OPTIONS Bellow Materials and Sizes, Call for more information



Roof-to-Roof



Roof-to-Wall

MODELS

ROOF-TO-ROOF

MODEL	JOINT SIZE AT MEAN T°F	MODEL	JOINT SIZE AT MEAN T°F
EWCF-100	1" (25mm)	EWCF-800	8" (203mm)
EWCF-200	2" (51mm)	EWCF-1000	10" (254mm)
EWCF-300	3" (76mm)	EWCF-1200	12" (305mm)
EWCF-400	4" (102mm)	EWCF-1600	16" (406mm)
EWCF-500	5" (127mm)	EWCF-1800	18" (457mm)
EWCF-600	6" (152mm)	EWCF-2000	20" (508mm)
EWCF-700	7" (178mm)		

ROOF-TO-WALL

MODEL	JOINT SIZE AT MEAN T°F	MODEL	JOINT SIZE AT MEAN T°F
EWCF-100W	1" (25mm)	EWCF-800W	8" (203mm)
EWCF-200W	2" (51mm)	EWCF-1000W	10" (254mm)
EWCF-300W	3" (76mm)	EWCF-1200W	12" (305mm)
EWCF-400W	4" (102mm)	EWCF-1600W	16" (406mm)
EWCF-500W	5" (127mm)	EWCF-1800W	18" (457mm)
EWCF-600W	6" (152mm)	EWCF-2000W	20" (508mm)
EWCF-700W	7" (178mm)		