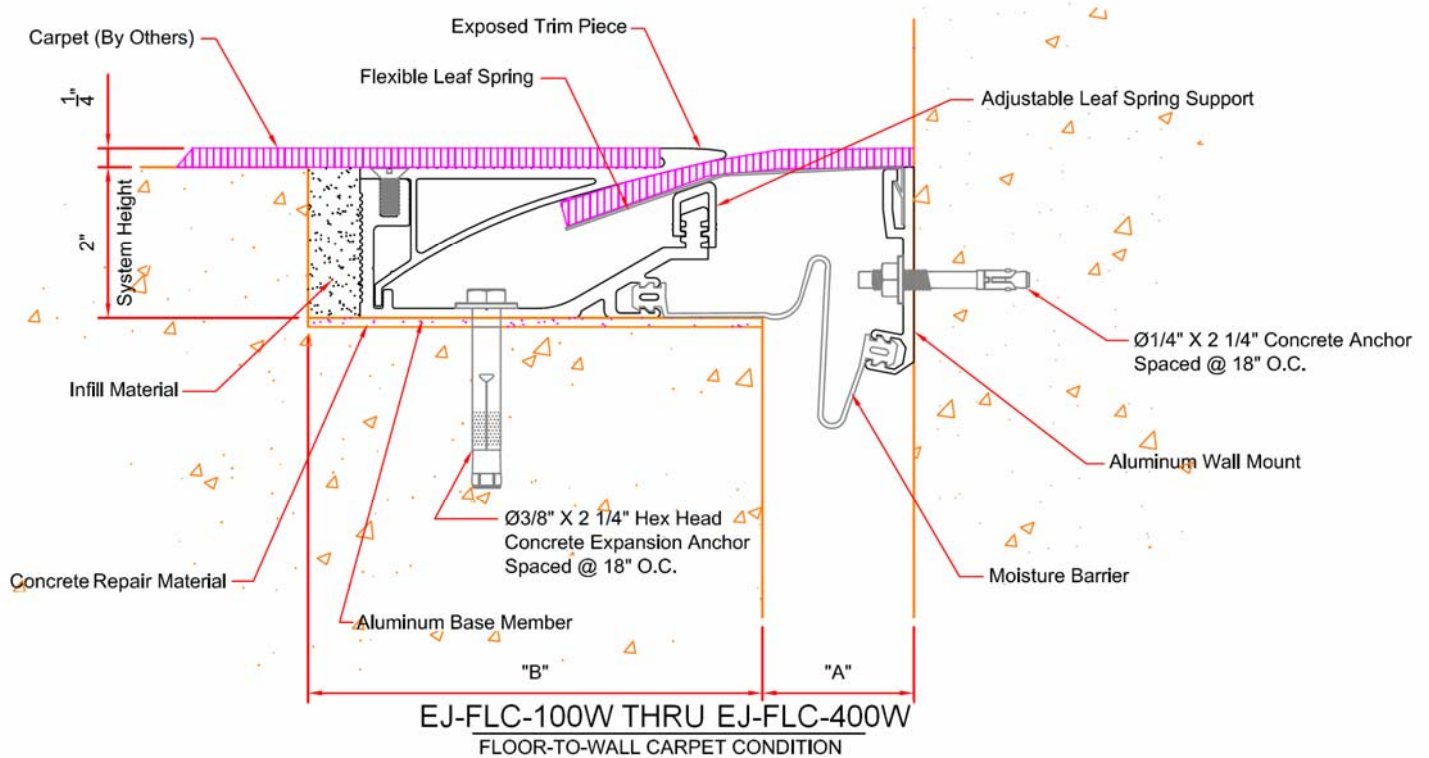


EJ-FLC-W SERIES

Expansion Joint Cover System for Floors Floor-to-Wall Condition



() - Denotes Millimeters

MODEL	SYSTEM HEIGHT	A			B	TOTAL MOVEMENT
		AT INSTALL	ALLOW MIN.	ALLOW MAX.		
-FLC-100W	2"(51)	1"(25)	5/8"(16)	1-5/8"(41)	7"(178)	1"(25)
-FLC-200W	2"(51)	2"(51)	1"(25)	3"(76)	6"(152)	2"(51)
-FLC-400W	2"(51)	4"(102)	2"(51)	6"(152)	4"(102)	4"(102)

