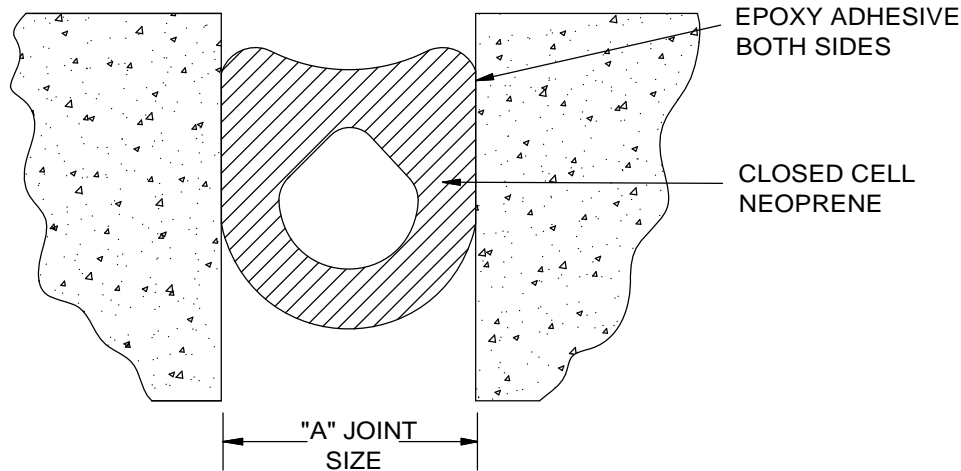
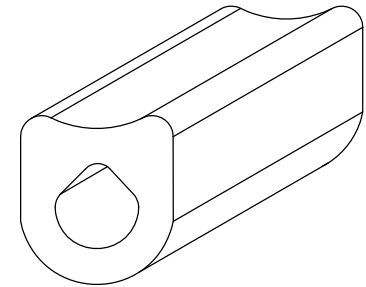


Model Number	Nominal Seal Width		Rec. Install Width		Joint Opening "A"					
					Min.		Max.		Total	
	in	mm	in	mm	in	mm	in	mm	in	mm
INS-100	1.000	25	0.800	20	0.450	11	1.250	32	0.8	20
INS-150	1.500	38	1.200	30	0.675	17	1.875	48	1.2	30
INS-200	2.000	51	1.600	41	0.900	23	2.500	64	1.6	41
INS-250	2.500	64	2.000	51	1.125	29	3.125	79	2.0	51
INS-300	3.000	76	2.400	61	1.350	34	3.750	95	2.4	61
INS-400	4.000	102	3.200	81	1.800	46	5.000	127	3.2	81



INS SERIES COLOR
BLACK

**INS Product Notes**

1. Non-invasive anchoring. No metal-to-substrate connections. The system is locked into place by back-pressure of foam and epoxy.
2. Moisture resistant. Bonded in place with a specially formulated two-part epoxy adhesive providing water tightness throughout the joint area.
3. Traffic-durable. This system holds up against high movement and traffic loads found in parking structures. Ideal for perimeters of stairwells and elevator shafts.
4. Joint movement capability is + 25% and - 55% (80% total) of nominal material size.

CUSTOMER:			
JOB REF:			
LOCATION:			
QTY:			
 <small>Right to site.</small> 9300 73rd Avenue North Brooklyn Park, MN 55428		TITLE:	
		EJ-INS SERIES, EJ Seal, Interior/Exterior, Slab to Slab, Recess Mount, Compression, Black, Closed Cell Neoprene, 1 FT increments	
NAME	DATE	SIZE	DWG. NO.
DRAWN	DKL	2/18/15	A
RELEASED	GN	2/18/15	WEIGHT:
			<b>EJ-INS SERIES</b>
			REV A
			SHEET 1 OF 1