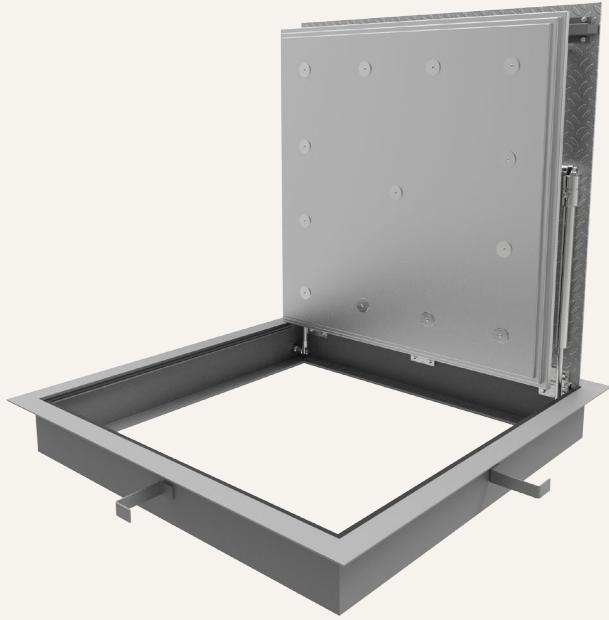


Fire-Rated

DIAMOND TREAD FLOOR DOOR

Nystrom's Diamond Tread Floor Door is designed to contain fire from penetrating through the opening. Available with 2- or 3-hour fire-rating options, this floor door is designed for pedestrian traffic loads.



FEATURES

BOLT-IN INSTALLATION Available with a bolt-in option for retrofit or drop-in installations.

FIRE-RATED Tested to NFPA 288, this floor door is Warrnook-Hersey labeled with 2- or 3-hour fire-rating with a maximum temperature rise to 250°F.

DETAILS

LOAD 300 psf live load

MATERIAL Aluminum: 1/4 inch, mill finish with gray primer on exterior frame

COVER Diamond tread plate

FIRE-RATING 2- or 3-Hour

FRAME Angled Frame

INSTALLATION

- Cast-In
- Bolt-in

SPRING Gas spring, Type 316 Stainless Steel

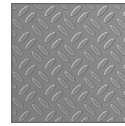
HINGES Heavy-duty Type 316 Stainless Steel butt hinge

LATCH Slam latch, Type 316 Stainless Steel, with inside pull release cable, includes removable 5/16 inch steel square "L" handle and threaded plug

COMPLIANCE NFPA 288

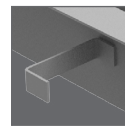
OPTIONS Self-closing mechanism automatically closes door at 165°F in event of fire, dampers for slow opening

MATERIALS

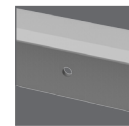


Aluminum

INSTALLATION



Cast-in



Bolt-in

ORDER GUIDE

BASE	RATING	WIDTH	X	LENGTH	OPTIONS
FC			X		
	RM 2-Hour	Standard Sizes (W x L)		SC Self-Closing Mechanism	
	CM 3-Hour	24" x 24"	36" x 36"	W Wood Frame, Bolt-In	
		30" x 30"	42" x 42"		
		30" x 36"	48" x 60"		

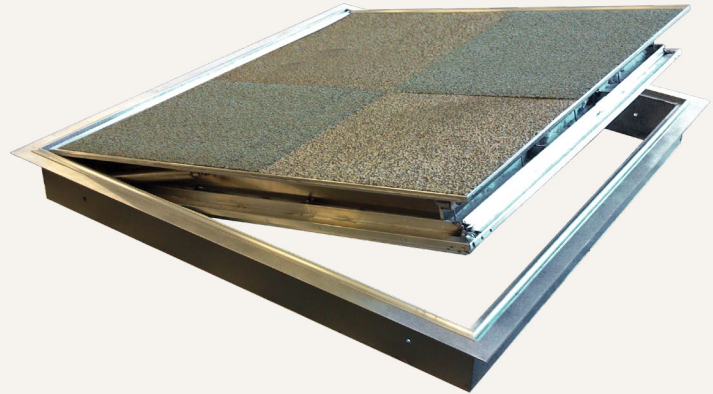
Additional sizes available, call for more information.

Download Drawings, CAD, Spec, and LEED documents at www.Nystrom.com

Fire-Rated 1/8 Inch Pan

FIRE-ARCHITECTURAL FLOOR DOOR

Nystrom's Fire-Rated Floor Door is designed to contain a fire from penetrating through the opening. This floor door is reinforced for pedestrian traffic loads and features a pan that accepts carpet or vinyl tile. Interior applications only.



FEATURES

MINIMAL SIGHT LINE The recessed design allows for 1/8 VCT flooring infill to seamlessly integrate with the surrounding area.

FIRE-RATED Tested to NFPA 288, this floor door is Warnock-Hersey labeled with 2- or 3-hour fire-rating with a maximum temperature rise to 250°F.



DETAILS

LOAD 300 psf live load

MATERIAL Aluminum: 1/4 inch, mill finish with gray primer on exterior frame

COVER 1/8 inch pan recess for carpet or tile

FIRE-RATING 2- or 3-Hour

FRAME Extruded Aluminum Angle

INSTALLATION

- Cast In
- Bolt-In

SPRING Gas spring, Type 316 Stainless Steel

HINGES Heavy-duty Type 316 Stainless Steel butt hinge

LATCH Slam latch, Type 316 Stainless Steel, with inside pull release cable, includes removable 5/16 inch steel square "L" handle and threaded plug

COMPLIANCE NFPA 288

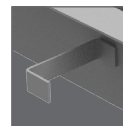
OPTIONS Self-closing mechanism automatically closes door at 165°F in event of fire, dampers for slow opening

MATERIALS

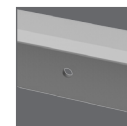


Aluminum

INSTALLATION



Cast-in



Bolt-in

ORDER GUIDE

BASE	RATING	WIDTH	X	LENGTH	COVER
FT			X		
	RM 2-Hour	Standard Sizes (W x L)			SC Self-Closing Mechanism
	CM 3-Hour	24" x 24"		36" x 36"	W Wood Frame, Bolt-In
		30" x 30"		42" x 42"	
		30" x 36"		48" x 60"	