

Fire-Rated Wall

COMPRESSION SEAL (FES2/FES3)



Standard fire-retardant wall foam. The 2-hour and 3-hour Fire-Rated Wall Compression Seal is a silicone bellow system designed with a fire-retardant saturated foam. It is watertight, fire-rated, and has a dual sided primary seal for both new and retrofit structural expansion joints in wall applications.

FEATURES

FIRE-RATED The precompressed seal is composed of a fire-retardant impregnated foam that is coated on both faces.

MULTI-FUNCTIONAL This seal provides water and fire protection, color coordination, thermal insulation, sound attenuation and structural joint movement.

SOUND ATTENUATING Acoustic dampening rated STC 62 - OITC 52.

DETAILS

MATERIAL Silicone bellow with foam sealant

SIZE 1/2 inch to 6 inches

LENGTH 6.56 linear feet (2 meter)

APPLICATION Interior or Exterior

INSTALLATION Wall

CERTIFICATION UL 2079, ASTM E1966, E119 and E1399

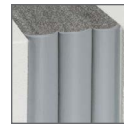
COLORS Sikasil WS-295

OPTIONS Terminations and Transitions

MOVEMENT

- 2-Hour: +/-50% (Total 100%)
- 3-Hour: +/-25% (Total 50%)

MATERIALS

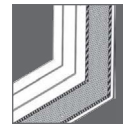


Silicone Bellow

OPTIONS



Terminations



Transitions

MODELS

2-HOUR MODEL	JOINT SIZE at mean T° F	SEAL DEPTH	3-HOUR MODEL	JOINT SIZE at mean T° F	SEAL DEPTH
FES2-050	1/2" (12mm)	4" (100mm)	FES3-050	1/2" (12mm)	5" (125mm)
FES2-075	3/4" (20mm)	4" (100mm)	FES3-075	3/4" (20mm)	5" (125mm)
FES2-100	1" (25mm)	4" (100mm)	FES3-100	1" (25mm)	5" (125mm)
FES2-200	2" (50mm)	4" (100mm)	FES3-200	2" (50mm)	5" (125mm)
FES2-300	3" (75mm)	4" (100mm)	FES3-300	3" (75mm)	5" (125mm)
FES2-400	4" (100mm)	4" (100mm)	FES3-400	4" (100mm)	5" (125mm)
FES2-500	5" (125mm)	4" (100mm)	FES3-500	5" (125mm)	5" (125mm)
FES2-600	6" (150mm)	4" (100mm)	FES3-600	6" (150mm)	5" (125mm)

Additional sizes available in 1/4 inch increments from 1 inch to 6 inches.