

# FIRST APPEARANCES **MATTER**



## **Entrance Flooring Systems.**

Nystrom manufactures a full line of entrance flooring systems; from elegant stainless steel to rugged brushes we have the treads that meet your needs. Protect your beautiful floors by keeping the dirt at the door.

## **Keeping It Clean.**

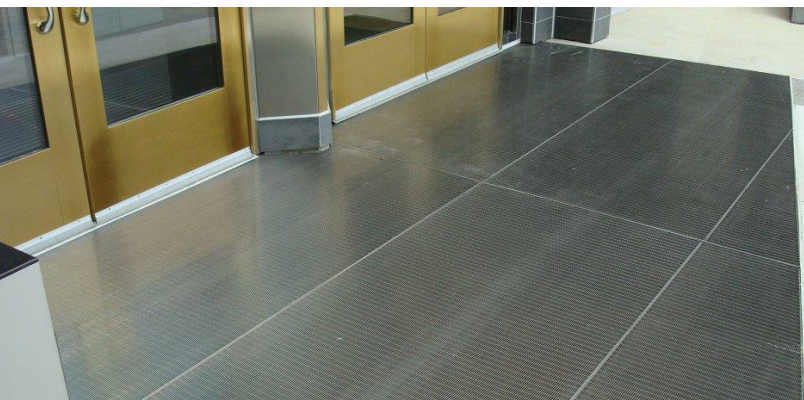
By adding and properly maintaining an Entrance Flooring System 18 feet in length, 90% of tracked dirt will be kept from polluting a building.

- ✓ **Remove the dirt**
- ✓ **Absorb the moisture**
- ✓ **Preserve your floors**





# FIRST APPEARANCES **MATTER**



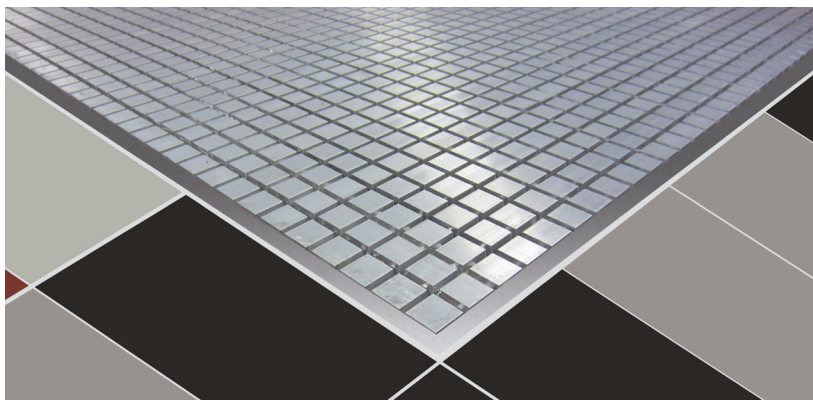
## Architectural Stainless Steel

### EleGRIL®

- 3/8", 5/8" or 9/8" rails
- Welded V wire tread

### ProGRIL®

- 3/4" or 9/8" rails
- Profile Bar tread



## Architectural Aluminum

### AlumaGRIL®

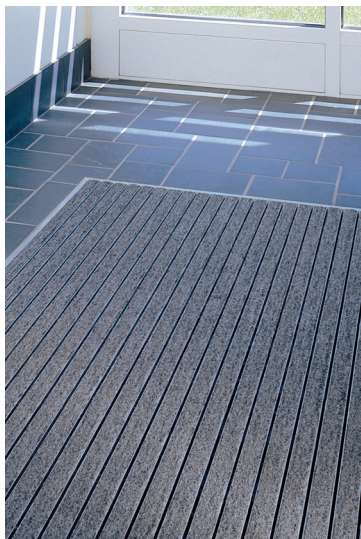
- 1" rails
- 1/2" Plank, Square and Rectangular treads



## Rigid Aluminum Grates

### GRATEdesign®

- 1-3/4" key locked rails
- 9 tread options
- Mix and match treads



## Roll-Up Aluminum Grates

### Roll-UP GRATEdesign®

- 3/4" rail, LDPE hinge
- 9 tread options
- Mix and match treads



## Roll-Up Aluminum Mats

### MATdesign®

- 3/8" rail, aluminum hinge
- 8 tread options
- Mix and match treads

### QuietFLEX®

- 3/8" rail, LDPE hinge
- 8 tread options
- Mix and match treads



## Specialty Grates

### EnvIRONtreadII®

- "Green" grate
- Buffed recycled rubber tread
- 1/2" or 3/4" depths
- Reversible