

Seismic Wall

FIRE BARRIER SYSTEM (FLW)

The Seismic Fire Barrier System is recommended for openings up to 24 inches with seismic activity. The system is rated for 2 and 3 hour rating with factory made transitions when required for out of the box installation.

FEATURES

FIRE-RATED Constructed of fire retardant materials to contain fires from spreading thru joint openings. Available in 2 or 3 hour ratings.

LARGE OPENINGS Available up to 24 inch opening for larger requirements.

EASY INSTALLATION The system installs with tongue and groove process with limited or no caulking requirements.



DETAILS

MOVEMENT

- Thermal: Horizontal and Vertical
- Seismic: Lateral Shear

MOUNTING

- Inside: All sizes
- Top Mount: 4 inches and greater

JOINT SIZE 4 inches to 24 inches

LENGTH

- FLF140: 6.5 Linear Feet (2m)
- FLF: 10 Linear Feet

FIRE-RATING 2 hour (standard) or 3 hour

APPLICATION Interior

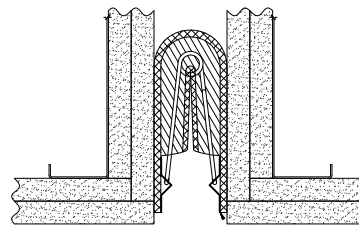
INSTALLATION Wall or Ceiling

COMPLIANCE UL 2079, ASTM E-1966, UL air leak, ASTM E 1399 cycling, hose stream

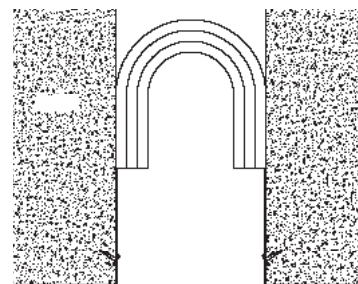
MODELS

MODEL	JOINT SIZE AT MEAN T°F	MODEL	JOINT SIZE AT MEAN T°F
EJ-FLW140-200	2" (51mm)	EJ-FLW-1200	12" (305mm)
EJ-FLW140-300	3" (76mm)	EJ-FLW-1400	14" (354mm)
EJ-FLW140-400	4" (102mm)	EJ-FLW-1600	16" (406mm)
EJ-FLW-600	6" (152mm)	EJ-FLW-1800	18" (457mm)
EJ-FLW-800	8" (203mm)	EJ-FLW-2000	20" (508mm)
EJ-FLW-1000	10" (254mm)		

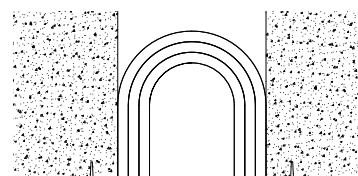
Additional options available, call for more information.



Inside Mount (standard)
EJ-FLW140-200 shown



Inside Mount (standard)
EJ-FLW-600 shown



Top Mount
EJ-FLW-600-TM shown