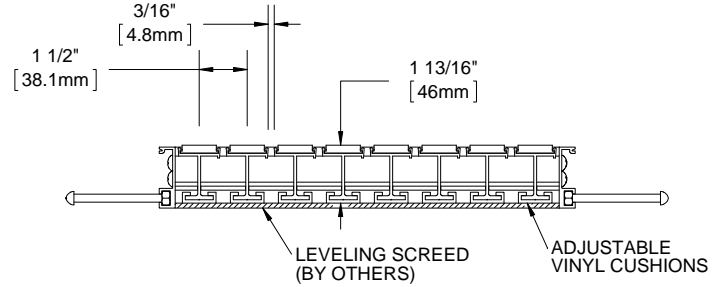
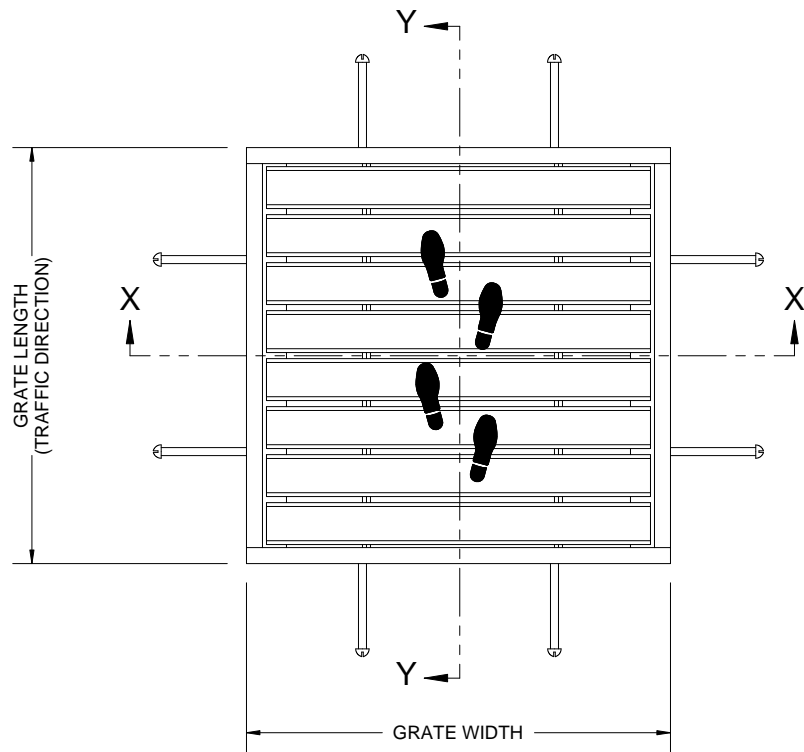


\*GD74P PREMIUM CARPET INSERT  
 \*GD74R RUGGED SCRUB INSERT  
 \*GD74V VINYL INSERT  
 \*GD74E ECOTREAD INSERT  
 \*GD74U RIBBED RUBBER INSERT  
 GD74G VINYL ABRASIVE INSERT  
 GD74X POURED ABRASIVE  
 \*GD74A SERRATED ALUMINUM  
 \*GD74B BRUSH INSERT

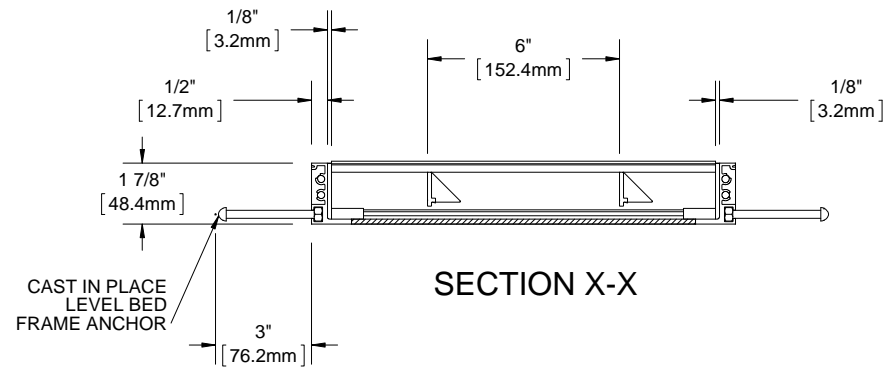
QTY	MODEL	WIDTH	LENGTH	FINISH	LOCATION

B

B



SECTION Y-Y



SECTION X-X

A

A

- NOTES:**
- STANDARD MAXIMUM SECTION SIZE OF GRATE WIDTH NOT TO EXCEED 8'-0", CUSTOM SECTIONING AVAILABLE
  - FRAME ANCHOR SPACING: 6" FROM CORNERS, 24" MAX
  - VERIFY TRAFFIC DIRECTION AND THAT SECTIONING DOES NOT OCCUR IN A TRAFFIC LANE
  - ALL RAIL COMPONENTS ARE MADE OF 6063-T6 ALUMINUM ALLOY, ALL FRAME COMPONENTS ARE MADE OF 6063-T5 ALUMINUM ALLOY. KEYLOCKS ARE MADE WITH 6061-T6 ALUMINUM ALLOY
  - TREAD RAILS MUST RUN PERPENDICULAR TO TRAFFIC DIRECTION
  - TRAFFIC DIRECTION DIMENSION CAN ONLY BE CHANGE IN 1 1/2" (38.1 MM) INCREMENTS UNLESS OPTIONAL ALUMINUM FILLER IS INCLUDED
  - GRATE DIMENSION ALLOWS FOR CLEARANCE BETWEEN GRATE SECTIONS AND FRAMES IN THE WIDTH DIMENSION
  - ADDITIONAL INFORMATION CAN BE FOUND IN THE PRODUCT SPECIFICATION AND IS CONSIDERED PART OF THIS TRANSMITTAL.
  - FRAME MODEL NUMBER: FD74LBC

\* AVAILABLE IN ALTERNATING TREADS

PROPRIETARY AND CONFIDENTIAL: THE INFORMATION CONTAINED IN THIS DRAWING IS THE SOLE PROPERTY OF NYSTROM. ANY REPRODUCTION IN PART OR AS A WHOLE WITHOUT THE WRITTEN PERMISSION OF NYSTROM IS PROHIBITED.

PROJECT:			
ARCHITECT:			
CONTRACTOR:			
 9300 73rd Avenue North Minneapolis, MN 55428		DESCRIPTION:	
		GRATEdesign® 1-3/4', Aluminum Grate with Cast-In, Level Bed, Aluminum, Frame	
NAME	DATE	SIZE	DWG. NO.
DRAWN DKL	4/14/15	A	GD74-FLBC
RELEASED PE	4/14/15	SCALE: NTS	SHEET 1 OF 1
			REV B