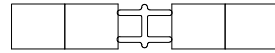
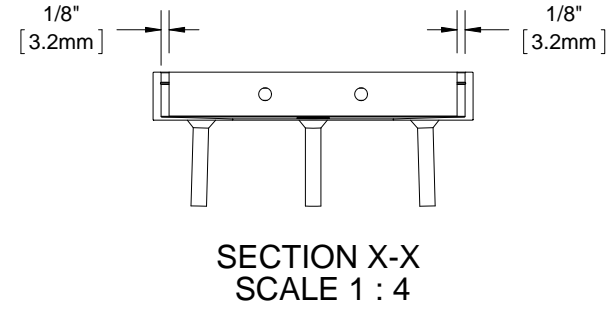
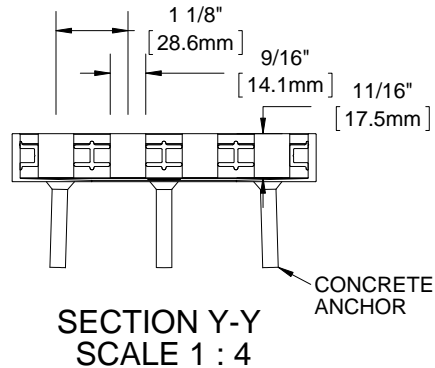
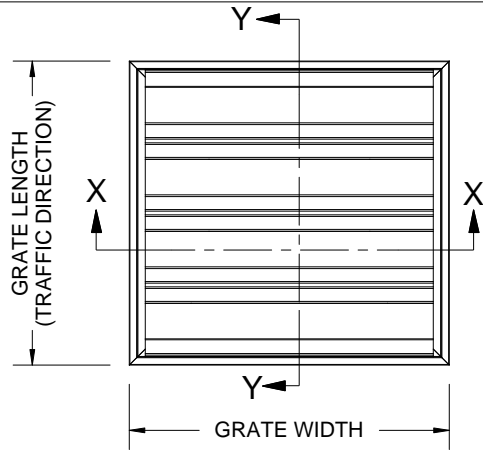


GV34C

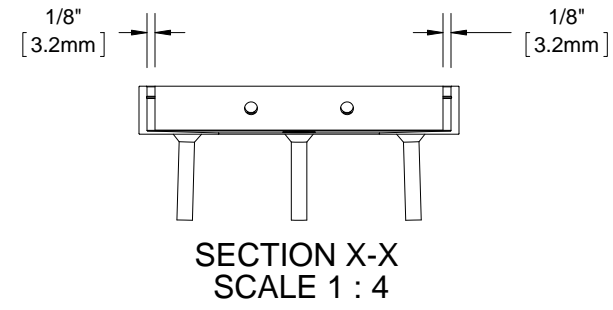
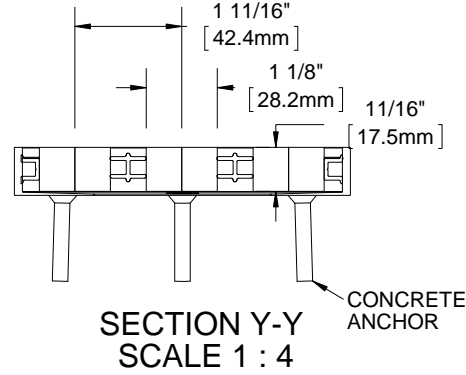
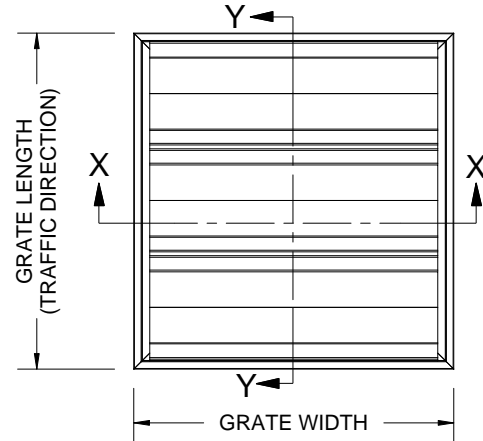


GV34CC

QTY	MODEL	WIDTH	LENGTH	FINISH	LOCATION



SINGLE TREAD



DOUBLE TREAD

- NOTES:**
- STANDARD MAXIMUM SECTION SIZE OF GRATE WIDTH NOT TO EXCEED 10'-0"
 - FRAME ANCHOR SPACING: 6" FROM CORNERS, 24" MAX
 - VERIFY TRAFFIC DIRECTION
 - ALL RAIL COMPONENTS ARE MADE OF 6063-T6 ALUMINUM ALLOY, ALL FRAME COMPONENTS ARE MADE OF 6063-T5 ALUMINUM ALLOY
 - TREAD RAILS MUST RUN PERPENDICULAR TO TRAFFIC DIRECTION
 - GRATE DIMENSION ALLOWS FOR CLEARANCE BETWEEN GRATE SECTIONS AND FRAMES IN THE WIDTH DIMENSION
 - ADDITIONAL INFORMATION CAN BE FOUND IN THE PRODUCT SPECIFICATION AND IS CONSIDERED PART OF THIS TRANSMITTAL.
 - FRAME MODEL NUMBER: FV34LBM

PROJECT:			
ARCHITECT:			
CONTRACTOR:			
		DESCRIPTION:	
		envIRONtread II®, 3/4", Reversible Recycled Rubber Grate with Mechanically Fastened, Tapered Angle, Aluminum Frame	
9300 73rd Avenue North Minneapolis, MN 55428	NAME DATE	SIZE	DWG. NO.
DRAWN DKL 4/20/15	RELEASED PE 4/20/15	A	GV34C-FLBM
SCALE: NTS	SHEET 1 OF 1	REV B	

PROPRIETARY AND CONFIDENTIAL: THE INFORMATION CONTAINED IN THIS DRAWING IS THE SOLE PROPERTY OF NYSTROM. ANY REPRODUCTION IN PART OR AS A WHOLE WITHOUT THE WRITTEN PERMISSION OF NYSTROM IS PROHIBITED.