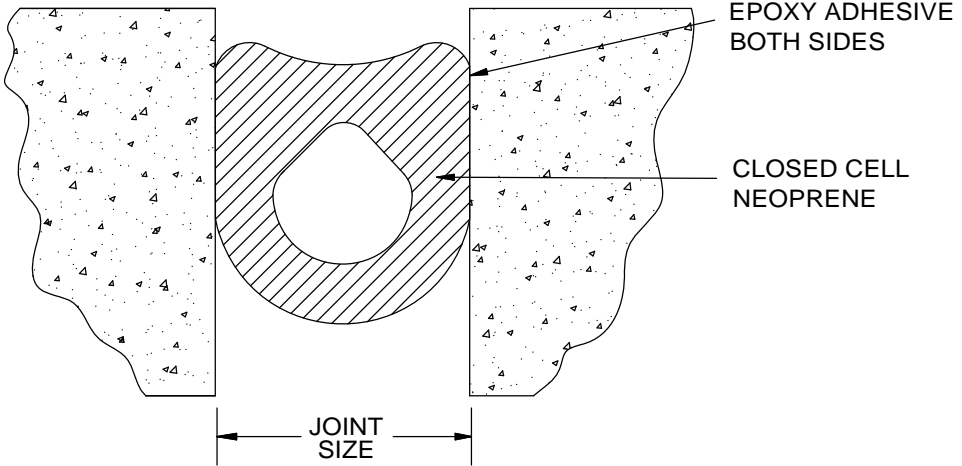
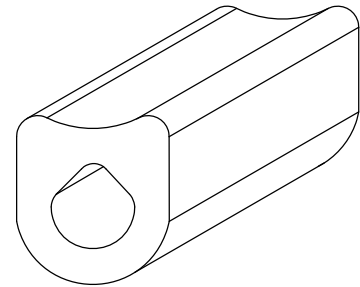


INS SERIES	
MODEL	JOINT NOMINAL
EJ-INS-100	1"
EJ-INS-150	1 1/2"
EJ-INS-200	2"
EJ-INS-250	2 1/2"
EJ-INS-300	3"
EJ-INS-400	4"



INS SERIES COLOR
BLACK

INS Product Notes

1. Non-invasive anchoring. No metal-to-substrate connections. The system is locked into place by back-pressure of foam and epoxy.
2. Moisture resistant. Bonded in place with a specially formulated two-part epoxy adhesive providing water tightness throughout the joint area.
3. Traffic-durable. This system holds up against high movement and traffic loads found in parking structures. Ideal for perimeters of stairwells and elevator shafts.
4. Joint movement capability is + 25% and - 55% (80% total) of nominal material size.

CUSTOMER:			
JOB REF:			
LOCATION:			
QTY:			
 <small>Right to site.</small> 9300 73rd Avenue North Brooklyn Park, MN 55428		TITLE:	
		EJ-INS SERIES, EJ Seal, Interior/Exterior, Slab to Slab, Recess Mount, Compression, Black, Closed Cell Neoprene, 1 FT increments	
NAME	DATE	SIZE	DWG. NO.
DRAWN	DKL	2/18/15	A
RELEASED	GN	2/18/15	WEIGHT:
			REV
			A
			SHEET 1 OF 1

PROPRIETARY AND CONFIDENTIAL: THE INFORMATION CONTAINED IN THIS DRAWING IS THE SOLE PROPERTY OF NYSTROM. ANY REPRODUCTION IN PART OR AS A WHOLE WITHOUT THE WRITTEN PERMISSION OF NYSTROM IS PROHIBITED.