

# Inset

## STAIR TREAD + NOSING

Inset Treads and Nosings are an ideal solution for walkways, ramps, landings and stair treads that require a strip of anti-slip abrasive material. The inset treads are available in bar or full abrasive.

### FEATURES

**RAMPS & WALKWAYS** Inset treads and nosings are the ideal solution for providing an anti-slip surface. Install on ramps, walkways, platforms and stairs on most surfaces.

**ANTI-SLIP SAFETY TREADS** Reduce slip hazards with ADA and OSHA compliant, non-combustible, abrasive stair treads. Abrasive treads provide a high level of slip resistance.

**CONTINUOUS COLOR** No need to worry about walking off the color as the abrasive material filler is dyed throughout.



### DETAILS

**CHANNEL** Extruded Aluminum

**APPLICATION** Marble/Stone, Poured Concrete, Steel Pan, Terrazzo or Wood

#### TREAD

- STSB: Ribbed Abrasive or EcoTread
- STSF: Full Abrasive

**WIDTH** 1-3/8", 2-1/4" or 3 inches

**LENGTH** Up to 12 linear feet

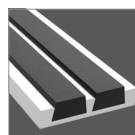
**MOUNTING** Anchor or Drilled Hole, Mech. Fastened

**NOSING** None

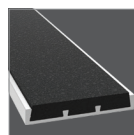
**OPTIONS** Photoluminescent, Mitered Cuts, Painted Undersides or Taped Tops

**CODE COMPLIANCE** 2010 ADA 504, 2015 IBC/ICC Section 1029.13.2, 2018 IBC/ICC Section 1029.14.2, and 2016 California Building Code Section 11B-504.4.1 (*STSF-N2.25 only*) and 11B-504.5

### TREAD

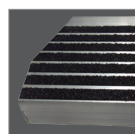


Ribbed Abrasive

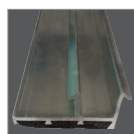


Full Abrasive

### OPTIONS



Mitered Cuts



Painted Undersides



Taped Tops

### ORDER GUIDE

RIBBED ABRASIVE MODELS	WIDTH	TREAD	INSTALL
<b>STSB-N1.375D</b>	1-3/8"	Abrasive Grit	Drilled Hole, Mech. Fastened
<b>STSB-N1.375E</b>	1-3/8"		Cast-In, Extruded Anchor
<b>STSB-N3D</b>	3"	EcoTread™	Drilled Hole, Mech. Fastened
<b>STSB-N3E</b>	3"		Cast-In, Extruded Anchor
<b>STSB-N1.375D-ECO</b>	1-3/8"		Drilled Hole, Mech. Fastened
<b>STSB-N1.375E-ECO</b>	1-3/8"		Cast-In, Extruded Anchor
<b>STSB-N3D-ECO</b>	3"	Drilled Hole, Mech. Fastened	
<b>STSB-N3E-ECO</b>	3"	Cast-In, Extruded Anchor	

FULL ABRASIVE MODELS	WIDTH	INSTALL
<b>STSF-N2.25D</b>	2-1/4"	Drilled Hole, Mech. Fastened
<b>STSF-N2.25E</b>	2-1/4"	Cast-In, Extruded Anchor

*Safe-T-Lume™ Inset Models  
Also Available – See Page 13*