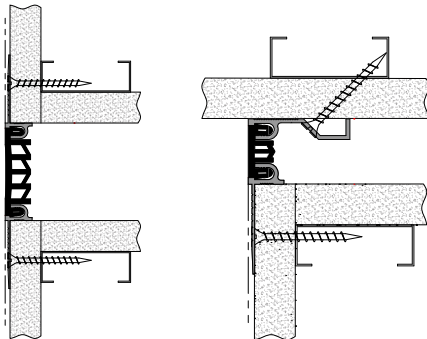


Elastomeric Corridor System

DRYWALL BEAD APPLICATION (LCW/W)



Wall-to-Wall

Wall/Ceiling Corner

This Drywall Bead Elastomeric Corridor System limits the sight line of the expansion joint by using a drywall bead for mounting. The finished tape and mud process provides a flush finish installation with an option of four Santoprene seal color options to match your surroundings.

DETAILS

MOUNTING Flush with Drywall Bead

PRODUCT SPECIFICATIONS Refer to page 22

MODELS

WALL-TO-WALL

MODEL	JOINT SIZE AT MEAN T°F	SYSTEM WIDTH	TOTAL MOVEMENT
LCW-100	1" (25mm)	1" (25mm)	.5" (13mm)
LCW-200	2" (51mm)	2" (51mm)	1" (25mm)

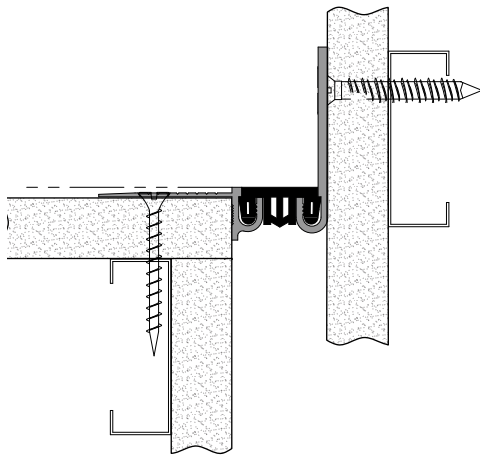
WALL/CEILING CORNER

MODEL	JOINT SIZE AT MEAN T°F	SYSTEM WIDTH	TOTAL MOVEMENT
LCW-100W	1" (25mm)	1" (25mm)	.5" (13mm)
LCW-200W	2" (51mm)	2" (51mm)	1" (25mm)

See page 29 for similar seismic product. LCD

Elastomeric Corridor System

CORNER DRYWALL BEAD APPLICATION (LCWM)



Wall/Ceiling Corner

Designed for drywall corner applications, this Elastomeric Corridor Corner System limits the sight line of the expansion joint by using a drywall bead. The system is mounted to the outside of the joint opening with a finished tape and mud process, while maintaining the elegance of exposed aluminum corner plate. The Santoprene seal comes in four colors to match your surroundings.

DETAILS

MOUNTING Flush with Drywall Bead

PRODUCT SPECIFICATIONS Refer to page 22

MODELS

WALL/CEILING CORNER

MODEL	JOINT SIZE AT MEAN T°F	SYSTEM WIDTH	TOTAL MOVEMENT
LCWM-100	1" (25mm)	1" (25mm)	.5" (13mm)
LCWM-200	2" (51mm)	2" (51mm)	1" (25mm)