

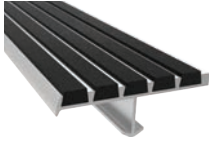


Direct Service Done Right



10 1443
Luminous Egress
Catalog

DIV
5

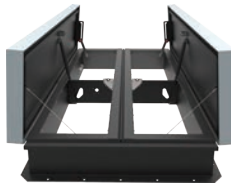
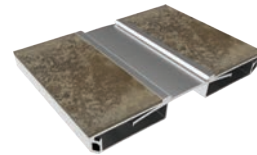
STAIR TREADS + NOSINGS
05 5000

FALL PROTECTION
05 5213 / 07 7200


For over 70 years Nystrom has been the go to manufacturer for specialty building products.

Today we provide a wide range of floor, roof and safety related access products that help create safer, more accessible buildings.

 DIV
7

ROOF HATCHES
07 7200

SMOKE VENTS
07 7200

PREFORMED JOINT SEALS + EXPANSION JOINT SYSTEMS
07 9100 + 07 9513

 DIV
8

ACCESS DOORS + PANELS
08 3100

FLOOR DOORS + HATCHES
08 3483

 DIV
10

LUMINOUS EGRESS PRODUCTS
10 1443

FIRE PROTECTION CABINET + FIRE EXTINGUISHERS
10 4413 + 10 4416

ENTRANCE MATS + FRAMES
ENTRANCE FLOOR GRILLES
12 4813 + 12 4816

 DIV
12



DIVISION 10 1443

Luminous Egress Products

Nystrom now offers a complete line of photoluminescent egress path marking systems that coordinate with Safe-T-Lume Stair Treads and Nosings. Required by International Building and Fire Codes, these products help guide pedestrians safely through egress stairways.

Codes + Compliance	5
Selection Guide	5-6

STRIPS + TAPES **7-10**

Safe-T-Lume Handrail Products	7
Safe-T-Lume Demarcation Products	8
Safe-T-Lume Obstacle Products	9
Safe-T-Lume Door Latch Products	10

SIGNAGE **11-14**

Safe-T-Lume Running Man Signs	11-12
Safe-T-Lume Floor ID Signs	13
Safe-T-Lume Not an Exit Sign	13
Safe-T-Lume Exit Signs	14

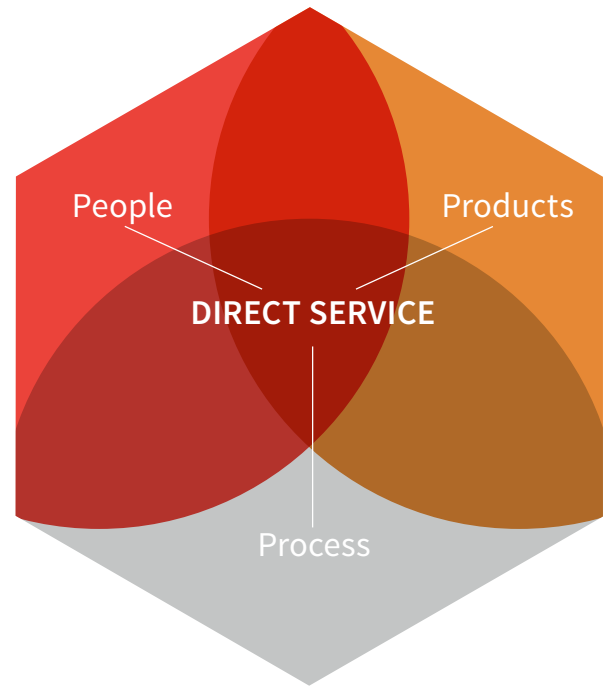
STAIR TREADS + NOSINGS **15**

Safe-T-Lume Ribbed Abrasive Nosings	15
Safe-T-Lume Two-Part Nosings	15
Safe-T-Lume Low Profile Renovation Nosings	15

Direct Service Done Right

Nystrom offers a broad line of specialty building products to better serve construction professionals and architects.

We have customer focused professionals and hassle-free processes that directly serve and simplify the building process.



PEOPLE

architects, engineers, designers, estimators, construction professionals, and service specialists

PROCESS

estimating & bid design support, tech support, logistics support, installation support, cad, revit/bim

PRODUCTS

standard & custom designs, warehousing, quality assurance, exceptional warranties, lead certification, labeling & tagging

TIME

EFFICIENCY

SERVICE



SPECIFICATION SUPPORT

By giving architects, designers and contractors open access to our expert team, we simplify the process of specifying and procuring access products from design through delivery and installation.

Don't get caught in the dark.

The Safe-T-Lume egress path markings, signs, stair treads and nosings meet the following codes:

International Building Code (IBC)

2015/2018 Section 1025 Luminous Egress Path Markings
2009/2012 Section 1024 Luminous Egress Path Markings

International Fire Code (IFC)

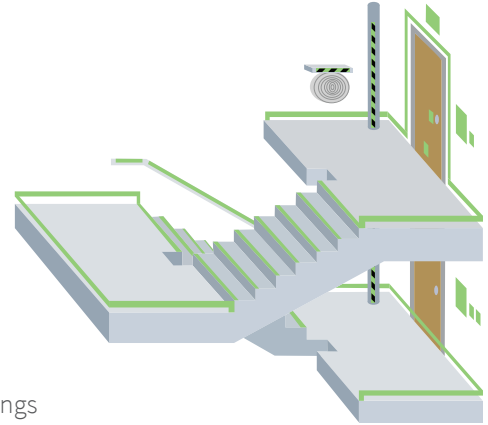
2015/2018 Section 1025 Luminous Egress Path Markings
2009/2012 Section 1024 Luminous Egress Path Markings

National Fire Protection Agency (NFPA)

2015/2018 NFPA 101, Life Safety Code Section 7.2.2.5.5 - Exit Stair Path Markings

New York City Building Code

2014 Chapter 10, Section BC 1024 Luminous Egress Path Markings



Additionally, these products have been tested to one or more of the following standards:

ASTM International (ASTM)

ASTM E2072 Standard Specification for Photoluminescent Safety Markings

“Except that the charging source shall be 1 footcandle (11 lux) of fluorescent illumination for 60 minutes, and the minimum luminance shall be 30 milicandelas per square meter at 10 minutes and 5 milicandelas per square meter after 90 minutes.”

Underwriters Laboratory (UL)

UL 1994 Standard for Luminous Egress Path Marking Systems

PRODUCT SELECTION GUIDE

The following selection guide is designed to assist you in selecting the right product for your application.

Strips + Tapes



	Handrail Strip	Marking Strip	NYC Marking Strip	Marking Tape	Obstacle Strip	Obstacle Tape	Door Latch Tape
Model	EM-DSH1	EM-DS1	EM-DS1-NYC	EM-DT1	EM-DSO1	EM-DTO1	EM-DLM
Handrails	✓			✓			
Landing Floors		✓	✓				
Landing Walls		✓	✓	✓			
Door Frames		✓	✓	✓			
Panic Bars		✓	✓	✓			
Latch Handles							✓
Obstructions					✓	✓	
NYC Compliant			✓	✓	✓	✓	✓

PRODUCT SELECTION GUIDE

Signs



Running Man



Running Man w/Arrow



Running Man Exit



Running Man Final Exit



Running Man, Exit & Arrow



Running Man w/Lobby Exit & Arrow

Model	EM-SRR/SRL	EM-SRA	EM-SRE	EM-SREFA	EM-SREA	EM-SRELA
General Exit Doors	✓	✓	✓	✓	✓	
Lobby Exit Doors	✓	✓	✓	✓	✓	✓
Misc. Wall Direction	✓	✓	✓	✓	✓	
NYC Compliant		✓	✓	✓	✓	✓



Floor ID



Not an Exit



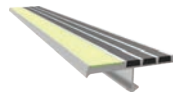
1-Sided Exit Sign



2-Sided Exit Sign

Model	EM-SFI	EM-SNE	EM-SE_1	EM-SE_2
General Exit Doors			✓	✓
Floor Identification	✓			
Non-Exit Doors		✓		
Walls	✓			✓
Above Exit Doors			✓	✓
NYC Compliant	✓	✓		

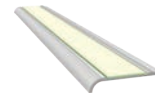
Stair Treads + Nosings



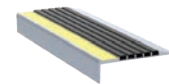
Ribbed Abrasive



Two-Part Ribbed



Low Profile Renovation



Renovation

Model	STSM-P3E	STTM-P3.375E	STRM-R2A	STRM-A5/L5
Stair Treads	✓	✓	✓	✓
Landing Floors	✓	✓		
Retrofit			✓	✓
NYC Compliant	✓	✓	✓	✓

Safe-T-Lume™

HANDRAIL PRODUCTS



Handrail Strip



Marking Tape

Safe-T-Lume Handrail Products align handrails to help provide safe egress in the event of a power outage or smoky conditions. The Handrail Strip is curved to fit onto standard round handrails and features an easy peel and stick backing. For an economic option, the Safe-T-Lume Marking Tape offers a fast and easy install.

FEATURES

BRIGHTNESS Materials are photoluminescent colored, bright and require no electrical charge. High-quality strips feature integrated dye throughout the material to exceed codes for brightness.

DURABILITY The Handrail Strip is long-lasting and tamper resistant. It is designed with materials that last, like the foam back adhesive and 53 mil resin.

INSTALLATION EASE The peel-and-stick adhesive backing is easy to install. Installation and maintenance manuals are available at www.nystrom.com.

DETAILS

MATERIAL

- EM-DSH1: 53 mil Resin
- EM-DT1: 16 mil Acrylic
- EM-DT1-NYC: 16 mil Acrylic

COLOR Photoluminescent

WIDTH 1 inch

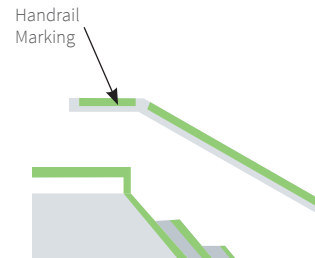
LENGTH

- EM-DSH1: 10 linear feet
- EM-DT1: 150 linear feet
- EM-DT1-NYC: 100 linear feet

MOUNTING Surface, Adhesive Back

CODE COMPLIANCE 2015/2018 IBC Section 1025, 2015/2018 IFC Section 1025, NFPA101 Section 7.2.2.5.5, and 2014 NYC BC Section 1024 (*EM-DT1-NYC only*)

TEST STANDARD UL 1994 and ASTM E2072



MODELS

MODEL	LENGTH	PRODUCT NAME	DESCRIPTION
EM-DSH1-10	10 LF	Safe-T-Lume Handrail Strip	Resin Strip, Pre-curved, Self-Adhesive
EM-DT1-150	150 LF	Safe-T-Lume Marking Tape	Acrylic Tape, Self-Adhesive
EM-DT1-100-NYC	100 LF	Safe-T-Lume NYC Marking Tape	NYC Compliant Acrylic Tape, Self-Adhesive

Safe-T-Lume™

DEMARICATION PRODUCTS

Safe-T-Lume Demarcation products outline hallways and stair landings in an egress stairway. The strip features a tapered edge for tamper resistance and can be butted up to each other for no waste. Both the strips and tape have peel and stick adhesive and are designed to mount on floors and walls. Options are also available to meet NYC code requirements.

FEATURES

BRIGHTNESS Materials are photoluminescent colored, bright and require no electrical charge. High-quality strips feature integrated dye throughout the material to exceed codes for brightness.

DURABILITY The Marking Strips are long-lasting and tamper resistant. It is designed with materials that last, like the foam back adhesive and 53 mil resin or the aluminum backed strip.

INSTALLATION EASE Labor saving features like peel-and-stick adhesives require no special tools and no special training. Installation and maintenance manuals are available at www.nystrom.com.



Marking Strip



Marking Tape

DETAILS

MATERIAL

- EM-DS1: 53 mil Resin
- EM-DS1-NYC: 32 mil Aluminum with Acrylic Tape
- EM-DT1: 16 mil Acrylic
- EM-DT1-NYC: 16 mil Acrylic

COLOR Photoluminescent

WIDTH 1 inch

LENGTH

- EM-DS1: 100 linear feet
- EM-DS1-NYC: 54 inches
- EM-DT1: 150 linear feet
- EM-DT1-NYC: 100 linear feet

MOUNTING Surface, Adhesive Back

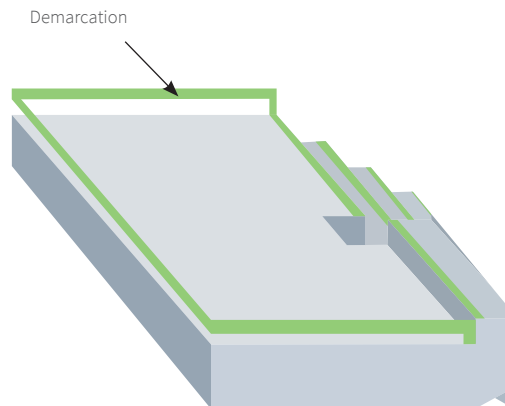
CODE COMPLIANCE 2015/2018 IBC Section 1025, 2015/2018 IFC Section 1025, NFPA101 Section 7.2.2.5.5, and 2014 NYC BC Section 1024 (*EM-DT1-NYC only*)

TEST STANDARD UL 1994 and ASTM E2072

MODELS

MODEL	LENGTH	PRODUCT NAME	DESCRIPTION
EM-DS1-100	100 LF	Safe-T-Lume Marking Strip	Resin Strip, Self-Adhesive
EM-DS1-54-NYC	54"	Safe-T-Lume NYC Marking Strip	NYC Compliant Aluminum Strip, Adhesive (<i>not supplied</i>)
EM-DT1-150	150 LF	Safe-T-Lume Marking Tape	Acrylic Tape, Self-Adhesive
EM-DT1-100-NYC	100 LF	Safe-T-Lume NYC Marking Tape	NYC Compliant Acrylic Tape, Self-Adhesive

Note: Marking Tape is not recommended for floor applications. To illuminate floors, please use marking strips.



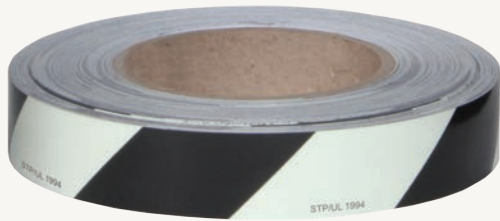
Safe-T-Lume™

OBSTACLE PRODUCTS

The Safe-T-Lume Obstacle Strips and Tape are used to mark obstacles, such as stand pipes and hose cabinets, that are located in an egress stairway. The material has been tested to UL 1994 test standards and meets current IBC, IFC, NFPA and NYC Building Code requirements.



Obstacle Strip



Obstacle Tape

FEATURES

BRIGHTNESS Materials are photoluminescent colored, bright and require no electrical charge.

DURABILITY The Obstacle Strip is long-lasting and tamper resistant. It is designed with materials that last, like the aluminum backed strip.

INSTALLATION EASE Labor saving features like the obstruction tape's peel-and-stick adhesives require no special tools and no special training.

DETAILS

MATERIAL

- EM-DSO1: 32 mil Aluminum with Acrylic Tape
- EM-DTO1: 16 mil Acrylic

COLOR Photoluminescent and Black

WIDTH 1 inch

LENGTH

- EM-DSO1: 5 linear feet
- EM-DTO1: 100 linear feet

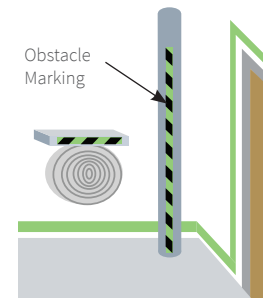
MOUNTING Surface, Self-Adhesive

CODE COMPLIANCE 2015/2018 IBC Section 1025, 2015/2018 IFC Section 1025, NFPA101 Section 7.2.2.5.5, and 2014 NYC BC Section 1024

TEST STANDARD UL 1994 and ASTM E2072

MODELS

MODEL	SIZE	PRODUCT NAME	DESCRIPTION
EM-DSO1-60	1" x 5 LF	Safe-T-Lume Obstacle Strip	NYC Compliant Striped Strip, Adhesive (<i>not supplied</i>)
EM-DTO1-100	1" x 100 LF	Safe-T-Lume Obstacle Tape	NYC Compliant Striped Tape, Self-Adhesive



Safe-T-Lume™

DOOR PRODUCTS

Safe-T-Lume Door products are made of glow-in-the-dark photoluminescent resin or acrylic. Available in a four inch die cut decal, or one inch rolls; the door products are designed to indicate where the door frame and latch are located in the event of a power outage or a smoke filled room.

FEATURES

BRIGHTNESS Materials are photoluminescent colored, bright and require no electrical charge. High-quality strips feature integrated dye throughout the material to exceed codes for brightness.

DURABILITY The Marking Strip is long-lasting and tamper resistant. It is designed with materials that last, like the foam back adhesive and 53 mil resin.

INSTALLATION EASE Labor saving features like peel-and-stick adhesives require no special tools and no special training. Installation and maintenance manuals are available at www.nystrom.com.



Die Cut Tape



Marking Strip



Marking Tape

DETAILS

MATERIAL

- EM-DLM: 16 mil Acrylic
- EM-DS1: 53 mil Resin
- EM-DT1: 16 mil Acrylic
- EM-DT1-NYC: 16 mil Acrylic

COLOR Photoluminescent

SIZE

- EM-DLM: 4 inches by 4 inches
- EM-DS1: 1 inch by 100 linear feet
- EM-DT1: 1 inch by 150 linear feet
- EM-DT1-NYC: 1 inch by 100 linear feet

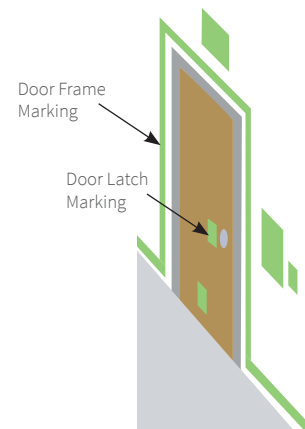
MOUNTING Surface, Self-Adhesive

CODE COMPLIANCE 2015/2018 IBC Section 1025, 2015/2018 IFC Section 1025, NFPA101 Section 7.2.2.5.5, and 2014 NYC BC Section 1024 (*EM-DLM and EM-DT1-NYC only*)

TEST STANDARD UL 1994 and ASTM E2072

MODELS

MODEL	SIZE	PRODUCT NAME	DESCRIPTION
EM-DLM-4X4	4" x 4"	Safe-T-Lume Door Latch Tape	NYC Compliant Die Cut Tape, Self-Adhesive
EM-DS1-100	1" x 100 LF	Safe-T-Lume Marking Strip	Resin Strip, Self-Adhesive
EM-DT1-150	1" x 150 LF	Safe-T-Lume Marking Tape	Acrylic Tape, Self-Adhesive
EM-DT1-100-NYC	1" x 100 LF	Safe-T-Lume NYC Marking Tape	NYC Compliant Acrylic Tape, Self-Adhesive



Safe-T-Lume™

RUNNING MAN SIGNS



Left Running Man Sign



Right Running Man Sign

Safe-T-Lume Running Man Signs provide a non-electric luminous egress routing system that is easily followed in the case of power loss in an emergency situation. Required by code, the standard running man symbol identifies the direction of egress. The material has been tested to UL 1994 and meets current IBC, IFC, and NFPA code requirements.

FEATURES

BRIGHTNESS Materials are photoluminescent colored, bright and require no electrical charge.

DURABILITY The Running Man Sign is long-lasting. It is designed with materials that last, like the foam back adhesive tabs and vinyl.

INSTALLATION EASE The Running Man Signs come with either self-adhesive tabs or can be mechanically fastened through pre-drilled holes. Installation and maintenance manuals are available at www.nystrom.com.

DETAILS

MATERIAL Vinyl

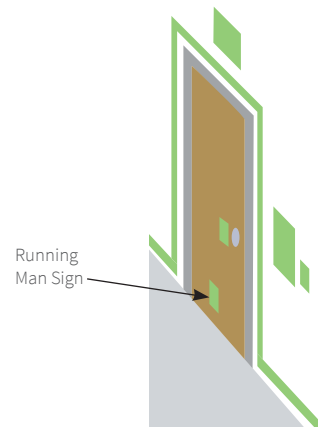
COLOR Photoluminescent and Green

MOUNTING Surface, Adhesive Tab or Mechanically Fastened

SIZE 8 inches by 8 inches

CODE COMPLIANCE 2015/2018 IBC Section 1025, 2015/2018 IFC Section 1025, and NFPA101 Section 7.2.2.5.5

TEST STANDARD ASTM E2072



MODELS

MODEL	SIZE	PRODUCT NAME	DIRECTION
EM-SRR-8X8	8" x 8"	Safe-T-Lume Running Man Sign	Right
EM-SRL-8X8	8" x 8"	Safe-T-Lume Running Man Sign	Left

Safe-T-Lume™

NYC COMPLIANT RUNNING MAN SIGNS

The Safe-T-Lume NYC Compliant Running Man Signs features the code required running man and various directional arrows and labels. This sign comes with adhesive tabs for easy wall mounting.

FEATURES

BRIGHTNESS Materials are photoluminescent colored, bright and require no electrical charge.

DURABILITY The NYC Compliant Running Man Signs are long-lasting. It is designed with materials that last, like the foam back adhesive tabs and vinyl.

INSTALLATION EASE The NYC Compliant Running Man Signs come with either self-adhesive tabs or can be mechanically fastened through pre-drilled holes. Installation and maintenance manuals are available at www.nystrom.com.



Running Man with Arrow



Running Man Exit



Lobby Exit with Arrow



Running Man Final Exit



Running Man Arrow Exit

DETAILS

MATERIAL Vinyl

COLOR Photoluminescent and Green

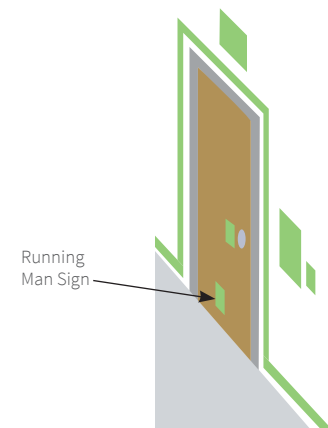
MOUNTING Surface, Adhesive Tab, or Mechanically Fastened

CODE COMPLIANCE 2015/2018 IBC Section 1023 and 1025, 2015/2018 IFC Section 1023 and 1025, and 2014 NYC BC Section 1024

TEST STANDARD UL 1994

MODELS

MODEL	SIZE	DIRECTION	PRODUCT NAME
EM-SRAU-8X4.5	8" x 4-1/2"	Up	Running Man with Arrow Sign
EM-SRAUR-8X4.5		Up, Right	
EM-SRAUL-8X4.5		Up, Left	
EM-SRAR-8X4.5		Right	
EM-SRAD-8X4.5		Down	
EM-SRADR-8X4.5		Down, Right	
EM-SRADL-8X4.5		Down, Left	
EM-SRAL-8X4.5		Left	
EM-SREFAR-8X11	8" x 11"	Right	Running Man Final Exit Sign
EM-SREFAUR-8X11		Up, Right	
EM-SREFAL-8X11		Left	
EM-SREFAUL-8X11		Up, Left	
EM-SRER-13X4.5	13" x 4-1/2"	Right	Running Man Exit Sign
EM-SREL-13X4.5		Left	



MODEL	SIZE	DIRECTION	DESCRIPTION
EM-SRAU-16X7	16" x 7"	Right	Lobby Exit with Arrow Sign
EM-SRAUR-16X7		Up, Right	
EM-SRAL-16X7		Left	
EM-SRAUL-16X7		Up, Left	
EM-SREAR-8X9	8" x 9"	Right	Running Man Arrow Exit Sign
EM-SREAU-8X9		Up, Right	
EM-SREADR-8X9		Down, Right	
EM-SREAL-8X9		Left	
EM-SREAU-8X9		Up, Left	
EM-SREADL-8X9		Down, Left	



Safe-T-Lume™

FLOOR ID SIGN

Safe-T-Lume Floor ID Signs are custom made for your building. These signs are made of the same photoluminescent material as the running man signs. The stair letters are at least 1-1/2 inches tall and the number designating the floor level is a minimum of 5 inches in height and is in braille immediately below. Other letters and numbers are at least 1 inch in height, as required per Section 1023.9.1.

DETAILS

MATERIAL Vinyl

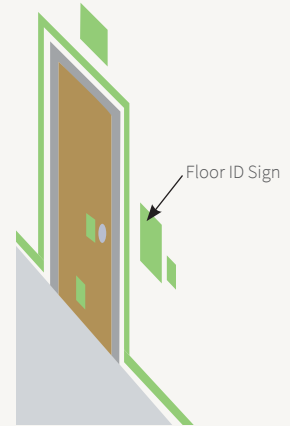
COLOR Photoluminescent and black

MOUNTING Surface, Adhesive Tabs or Mechanically Fastened

SIZE 13 inches by 18 inches

CODE COMPLIANCE 2015/2018 IBC Section 1023, 2015/2018 IFC Section 1023, and 2014 NYC BC Section 1022.8

TEST STANDARD UL 1994



MODELS

MODEL	DESCRIPTION
EM-SFI-13X18	Floor ID Sign

Safe-T-Lume™

NOT AN EXIT SIGN

The Safe-T-Lume Not an Exit Sign is designed to mark doors in an egress stairway that are not an exit door. These signs are constructed with a photoluminescent vinyl that collects and stores ambient light and glows during a blackout or smoky conditions.

DETAILS

MATERIAL Vinyl

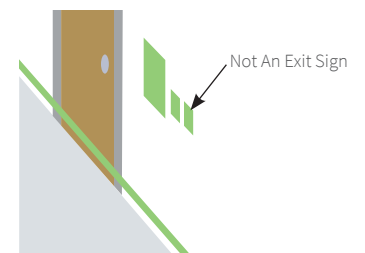
COLOR Photoluminescent, black and red

MOUNTING Surface, Adhesive Tabs, or Mechanically Fastened

SIZE 5-1/2 inches by 6-1/2 inches

CODE COMPLIANCE 2014 NYC BC Section 1024

TEST STANDARD UL 1994



MODELS

MODEL	DESCRIPTION
EM-SNE-5.5X6.5	Not an Exit Sign

Safe-T-Lume™

EXIT SIGNS

Safe-T-Lume Exit Signs provide a non-electric luminous egress routing system that is easily followed in the case of power loss in an emergency situation. Choose between one-sided or two-sided surface mount options. The material has been tested to UL 924 standards and meets current IBC, IFC, and NFPA code requirements.

FEATURES

BRIGHTNESS The glow-in-the-dark photoluminescent signs provides directions to the exit route. These exit signs are rated for 100 foot visibility with 90 minute emergency illumination.

DURABILITY The Exit Signs are long-lasting. It is designed with materials that last.

INSTALLATION EASE The Exit Signs come with mounting bracket hardware that can be installed with minimal tools. Installation and maintenance manuals are available at www.nystrom.com.



One-Sided Exit Sign



Two-Sided Exit Sign

DETAILS

MATERIAL Resin

COLOR Photoluminescent and red, green or black

MOUNTING Mechanically Fastened

SIZE 16 inches by 8 inches

CODE COMPLIANCE 2015/2018 IBC Section 1023 and 1025, 2015/2018 IFC Section 1023 and 1025

TEST STANDARD UL 924

MODELS

MODEL	COLOR	DESCRIPTION
EM-SLE100R1-15.5X8.75	Red	
EM-SLE100G1-15.5X8.75	Green	1-Sided
EM-SLE100B1-15.5X8.75	Black	
EM-SLE100R2-15.5X8.75	Red	
EM-SLE100G2-15.5X8.75	Green	2-Sided
EM-SLE100B2-15.5X8.75	Black	

COLORS



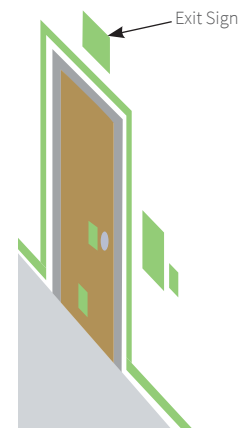
Red



Green



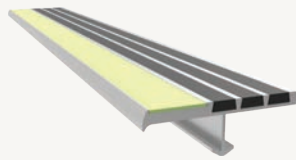
Black





Safe-T-Lume™

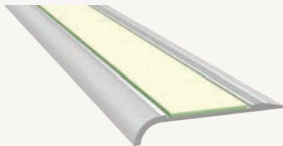
STAIR TREADS + NOSINGS



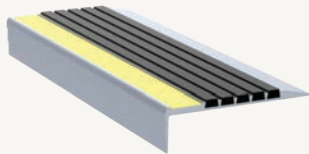
Ribbed Bar Abrasive



Two-Part Ribbed Bar Abrasive



Low Profile Renovation



Renovation

Safe-T-Lume Ribbed Bar Abrasive Stair treads are the industry's leading glow-in-the-dark tread. Also available in two-part ribbed abrasive (STTM). These treads are perfect for indoor and outdoor applications such as stadiums and parking garages. The Low-Profile Renovation Nosing (STRM) is ideal for indoor applications.

FEATURES

BRIGHTNESS The embedded glow-in-the-dark photoluminescent material provides needed illumination for a safe exit. Choose an embedded resin with superior glow or abrasive grit insert that exceeds code requirements.

DURABILITY The stair treads and nosings are long-lasting. They are designed with materials that last, like extruded aluminum and abrasive grit.

INSTALLATION EASE The Low-Profile Renovation nosings are cut to length and glued down. Installation and maintenance manuals are available at www.nystrom.com.

DETAILS

MATERIAL Extruded Aluminum with an embedded 53 mil resin insert or 21 mil abrasive grit insert

APPLICATION Poured Concrete or Steel Pan

TREAD

- STSM/STTM: Ribbed Abrasive
- STRM-A5/L5: Ribbed Abrasive
- STRM-R2A: Serrated

WIDTH

- STSM: 3 inches
- STTM: 3-3/8 inches
- STRM-R2A: 2 inches
- STRM-A5/L5: 5 inches

LENGTH Up to 12 linear feet

MOUNTING

- STSM: Anchor or Drilled Hole, Mech. Fastened
- STTM: Anchor
- STRM-R2A: Adhesive (supplied by other)
- STRM-A5/L5: Drilled Hole, Mechanically Fastened

NOSING

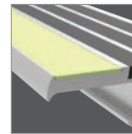
- STSM/STTM: Short-Tipped
- STRM-A5/L5: Long, Angled
- STRM-R2A: Radius

OPTIONS Stair Nosing Guards, Mitered Cuts, Painted Undersides or Taped Tops

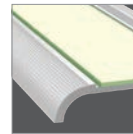
CODE COMPLIANCE 2015/2018 IBC Section 1025, 2015/2018 IFC Section 1025

TEST STANDARD ASTM 2072, UL 1994

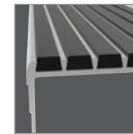
NOSING



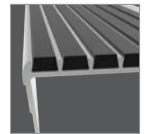
Short-Tipped



Radius



Long



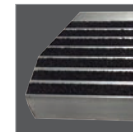
Angled-Long

OPTIONS

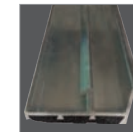


Stair Nosing Guards™

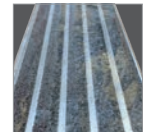
*Available on STSM-P3E/D only



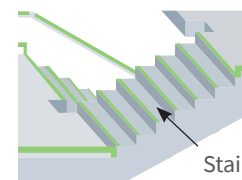
Mitered Cuts



Painted Undersides



Taped Tops



Stair Nosing

MODELS

MODEL	WIDTH	TYPE	INSTALL
STSM-P3E	3"	One-Part	Cast-In, Extruded Anchor
STSM-P3D	3"	One-Part	Drilled Hole, Mech. Fastened
STTM-P3.375E	3-3/8"	Two-Part	Cast-In, Extruded Anchor
STRM-R2A	2"	Renovation	Adhesive
STRM-A5/L5	5"	Renovation	Drilled Hole, Mech. Fastened

Visit nystrom.com for the latest version of this document and more information.



9300 73rd Avenue North
Minneapolis, MN 55428

Phone (800) 547-2635
Fax (866) 900-1959

info@nystrom.com



nystrom.com