

MAXtread™

VINYL MAT

Nystrom's new MAXtread is a flexible, open weave, vinyl mat with carpet inlays. This system will trap dirt, snow and sand while retaining the debris within the grid and can be easily rolled back for cleaning. Ideal for retail applications with heavy pedestrian traffic.

FEATURES

HINGE-FREE, NOISE-FREE The injection molded mats are fused together to form a flexible mat. The flexible PVC can be rolled back for easy cleaning.

PATENTED HOLD-DOWN SYSTEM The mats are secured in place with a unique, hidden, retainer system. Engineered for easy installation and removal for cleaning.

HEAVY-DUTY, HIGH TRAFFIC The combination of the deep well, and the open weave design, creates a large debris collection area; necessary for high pedestrian traffic.



ZONES
1 - 3

DETAILS

MATERIAL Vinyl

DEPTH 1/2 inch

TREAD SPACING 2-1/4 inches on center

TREAD OPTIONS Polypropylene Carpet with hook and loop (replaceable) or glued (permanent) attachment

FRAME Level Bed or Surface Mount

ROLLING LOAD 1200 lbs/wheel

MAT

MODEL	TREAD	FUNCTION	DEPTH	TRAFFIC
MX12H	Poly Carpet, Hook & Loop*	Scraping	1/2"	Medium to Heavy
MX12Z	Poly Carpet, Glued	Scraping	1/2"	Medium to Heavy

*Replaceable carpet

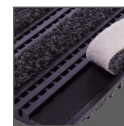
FRAME

MODEL	MOUNTING	MATERIAL	PROFILE	DEPTH
FX12SV	Surface	Vinyl	2-3/4"	1/2"
FX12SAM	Surface	Aluminum	2"	1/2"
FX12LCH	Level Bed, Mech. Fastened Channel	Aluminum	3/4"	1/2"
FX12LTR	Level Bed, Mech. Fastened Transition	Aluminum	1"	1/2"
FX12LTO	Level Bed, Mech. Fastened Transition with Overhang	Aluminum	1"	1/2"

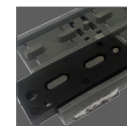
TREADS



Glued
(Permanent)



Hook & Loop
(Replaceable)

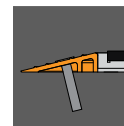


Lock Down
Clips

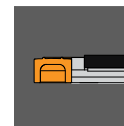
FRAMES



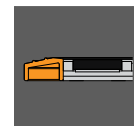
Surface,
Vinyl



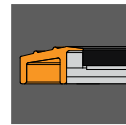
Surface,
Aluminum



Level Bed,
Mech. Fastened
Channel



Level Bed,
Mech. Fastened
Transition



Level Bed, Mech. Fastened
Transition with Overhang