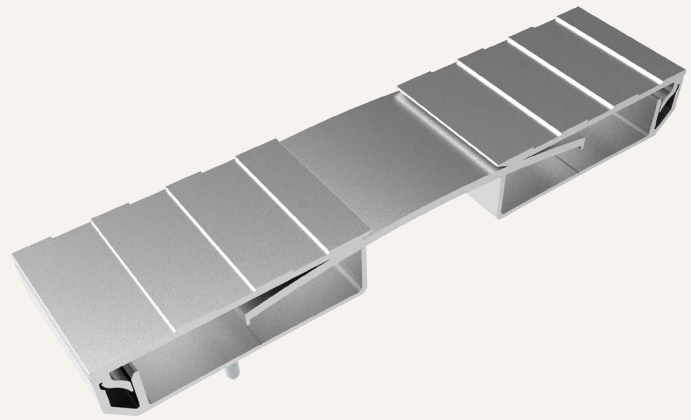


Seismic Glide

NO BUMP SYSTEM (NBF/W)

Nystrom's Seismic Glide No Bump system is designed to allow for multi-directional thermal movement, in a durable, easily assembled cover system. The convex design allows for a smooth, no bump, transition, when light cart wheeled traffic is rolled over the system.



FEATURES

EASIER INSTALLATION The beveled edge relief on the extrusion virtually eliminates any need to remove concrete from the block-out.

ANTI-SLIP SURFACE The no bump, ribbed anti-slip surface provides safe functionality for foot and cart traffic.

COORDINATING CORNERS Available with corner option for a complete floor solution.

DETAILS

MATERIAL 6063-T6 Aluminum

FINISH Mill

MOVEMENT

- Thermal: Horizontal and Vertical
- Seismic: Lateral Shear

MOUNTING Block Out

JOINT SIZE 1 inch to 4 inches

LENGTH 10 Linear Feet

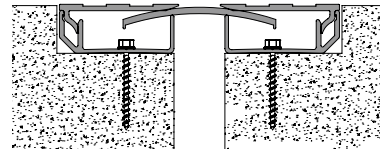
LOAD Pedestrian and Light Cart

INSTALLATION Floor

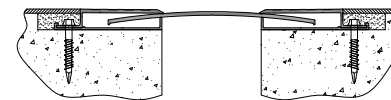
OPTIONS Moisture Barrier, Fire Barrier

MODELS

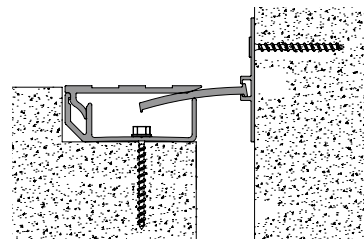
MODEL	INSTALLATION	JOINT SIZE AT MEAN T°F	SYSTEM WIDTH	TOTAL MOVEMENT
NBF-100	Floor-to-Floor	1" (25mm)	3.5" (89mm)	2" (51mm)
NBF-100W	Floor-to-Wall	1" (25mm)	2.25" (57mm)	1" (25mm)
NBF-200	Floor-to-Floor	2" (51mm)	4.5" (114mm)	3.75" (95mm)
NBF-200W	Floor-to-Wall	2" (51mm)	3.25" (83mm)	2.25" (57mm)
NBF-300	Floor-to-Floor	3" (76mm)	7.94" (202mm)	3" (76mm)
NBF-300W	Floor-to-Wall	3" (76mm)	5.5" (140mm)	2.25" (57mm)
NBF-400	Floor-to-Floor	4" (102mm)	8.94" (227mm)	4" (102mm)
NBF-400W	Floor-to-Wall	4" (102mm)	6.5" (165mm)	2.25" (57mm)



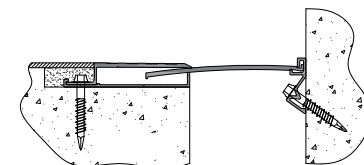
Floor-to-Floor (NBF100/NBF200 shown)



Floor-to-Floor (NBF300/NBF400 shown)



Floor-to-Wall/Corner (NBF100W/NBF200W shown)



Floor-to-Wall/Corner (NBF300W/NBF400W shown)