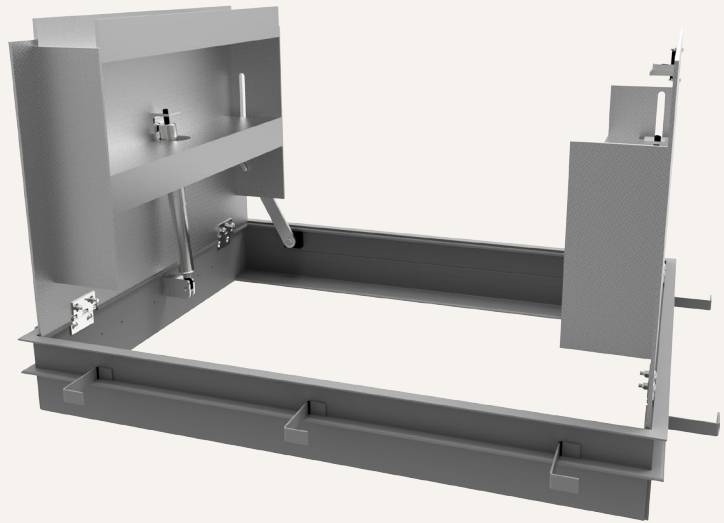


Non-Drainable

FLOOR DOOR, H20

The H20 Floor Door is designed for infrequent, light duty, off street traffic in areas where water infiltration and moisture is not a concern. Designed with a flush installation for new concrete applications.



FEATURES

VEHICLE LOAD Constructed with substantial structural beams in the cover to support a H20 vehicle load.

STEEL OPTION Optional 3/16 inch steel for added strength and durability. Standard finish of primed gray powder coat.

DETAILS

LOAD H20 wheel load

MATERIAL

- Aluminum: 1/4 inch, mill finish with gray primer on exterior frame

COVER Diamond tread plate

FRAME Angle

INSTALLATION Cast-In: 1/4 inch by 1 inch by 4 inch anchor straps welded for concrete pour

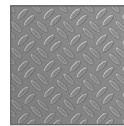
SPRING Coil type 17-7 Stainless Steel enclosed in Type 316 Stainless Steel telescopic tubes

HINGES Heavy duty Type 316 Stainless Steel

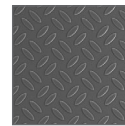
HOLD OPEN ARM Type 316 Stainless Steel automatic hold open arm locks cover in open position

LATCH Slam latch Type 316 Stainless Steel with inside lever handle, includes removable 5/16 inch steel square "L" handle and threaded plug

MATERIALS



Aluminum

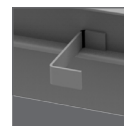


Primed Steel



Stainless Steel

INSTALLATION



Cast-in

ORDER GUIDE

MODEL	WIDTH	X	LENGTH	COVER		OPTIONS
FDNHA		X			AL	-
	Standard Sizes (W x L)			S Single Door		Locks
	Single Leaf	Double Leaf		D Double Door		Finishes
	24" x 24"	48" x 48"				Gaskets
	30" x 36"	48" x 72"				Operation
	36" x 36"	60" x 60"				Safety
	42" x 42"					Skirting
						Other