

proGRIL™

STAINLESS STEEL ARCHITECTURAL GRILLE

Nystrom's new stainless steel proGRIL offers top-of-the-line elegance and symmetry that will make a statement of grandeur in any entry.

FEATURES

PREMIER PRODUCT Top-of-the-line stainless steel design for high-end buildings with entrances that make a statement of grandeur.

MECHANICALLY INTERLOCKED Design with a u-clip construction.

ARCHITECTURAL CURVES Available with optional curved wires for revolving doors and column designs.

ZONES

1 + 2

DETAILS

MATERIAL Stainless Steel, Type 304 or 316

DEPTH 3/4 inch or 1-1/8 inch

TREAD SPACING .3275 inch on center

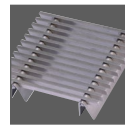
TREAD DESIGN .140 inch profile bar

TREAD OPTIONS Straight or Curved Wire

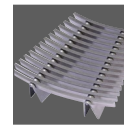
FRAMES Level Bed

ROLLING LOAD 500 lbs/wheel

TREADS

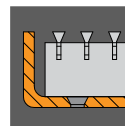


Straight Wire



Curved Wire

FRAMES



Level Bed,
Mech. Fastened

GRILLE

MODEL	TREAD	FUNCTION	DEPTH	TRAFFIC
GP34S	Straight Wire	Scraping	3/4"	Medium
GP34C	Curved Wire	Scraping	3/4"	Medium
GP98S	Straight Wire	Scraping	1-1/8"	Heavy
GP98C	Curved Wire	Scraping	1-1/8"	Heavy

FRAME

MODEL	MOUNTING	MATERIAL	PROFILE	DEPTH
FP34LBM	Level Bed, Mech. Fastened	Stainless Steel	1/8"	7/8"
FP98LBM	Level Bed, Mech. Fastened	Stainless Steel	1/8"	1-1/4"