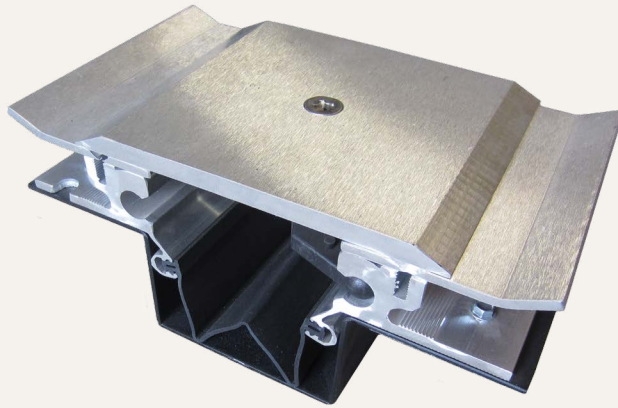


Heavy Duty

SEISMIC RECESSED SYSTEM (PTX/W)



This Heavy Duty Seismic Recessed System can accommodate larger openings with multi-directional movement requirements. An integral moisture barrier keeps the weather out.

FEATURES

COORDINATING CORNERS Available with corner option for a complete floor solution.

WATER-RESISTANT Engineered with an integrated moisture barrier for top quality water diversion with easy installation.

FLUSH TO SURFACE Designed with a smooth transition from deck to substrate.

DETAILS

MATERIAL 6063-T6 Aluminum

FINISH Mill

MOVEMENT

- Thermal: Horizontal and Vertical
- Seismic

MOUNTING Block Out

JOINT SIZE 2 inches to 18 inches

LENGTH 10 Linear Feet

APPLICATION Exterior

LOAD Vehicle

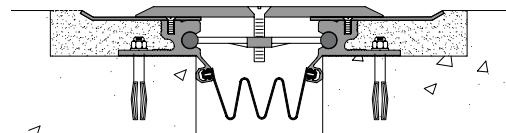
INSTALLATION Floor or Deck

OPTIONS Fire Barrier, Stainless Steel

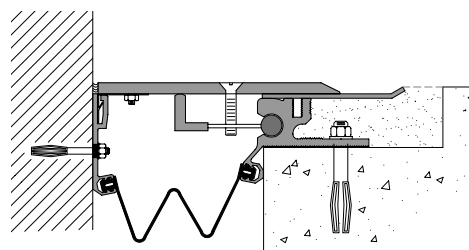
MODELS

DECK-TO-DECK

| MODEL | JOINT SIZE AT MEAN T°F | SYSTEM WIDTH | TOTAL MOVEMENT |
|----------|------------------------|----------------|-----------------|
| PTX-200 | 2" (51mm) | 6.25" (159mm) | 1.625" (41mm) |
| PTX-400 | 4" (102mm) | 10.25" (260mm) | 4.625" (117mm) |
| PTX-600 | 6" (152mm) | 14.25" (362mm) | 7.75" (197mm) |
| PTX-850 | 8" (203mm) | 18.25" (464mm) | 10.75" (273mm) |
| PTX-1000 | 10" (254mm) | 22.25" (565mm) | 13.625" (346mm) |
| PTX-1200 | 12" (305mm) | 26.25" (667mm) | 16.625" (422mm) |
| PTX-1500 | 15" (381mm) | 32.75" (832mm) | 21.625" (549mm) |
| PTX-1800 | 18" (457mm) | 38.25" (972mm) | 25.625" (657mm) |



Floor-to-Floor



Floor-to-Wall/Corner

DECK-TO-WALL/CORNER

| MODEL | JOINT SIZE AT MEAN T°F | SYSTEM WIDTH | TOTAL MOVEMENT |
|-----------|------------------------|-----------------|-----------------|
| PTX-200W | 2" (51mm) | 4.125" (104mm) | 1.25" (32mm) |
| PTX-400W | 4" (102mm) | 7.125" (181mm) | 3.75" (95mm) |
| PTX-600W | 6" (152mm) | 10.125" (257mm) | 6.25" (159mm) |
| PTX-850W | 8" (203mm) | 13.125" (333mm) | 8.75" (222mm) |
| PTX-1000W | 10" (254mm) | 16.125" (410mm) | 6.625" (169mm) |
| PTX-1200W | 12" (305mm) | 19.125" (486mm) | 8.125" (206mm) |
| PTX-1500W | 15" (381mm) | 23.875" (606mm) | 10.625" (270mm) |
| PTX-1800W | 18" (457mm) | 28.125" (714mm) | 12.625" (321mm) |