

# QuietFLEX®

## ROLL-UP MAT



Dual tread rugged scrub and serrated aluminum shown

### ZONES

1 - 3

Nystrom's QuietFLEX roll-up mat is constructed of LDPE hinges to reduce traffic noise. The lightweight aluminum rails make this mat easy to roll back for routine maintenance.

### FEATURES

**DESIGNED TO BE QUIET** Lightweight rails, LDPE hinges and a wide range of tread insert options make this an ideal mat for any interior entry with light to medium traffic.

**ROLL BACK FOR EASY CLEANING** Proper maintenance extends the life of your entry system. Regular vacuuming is necessary for all 3/8 inch deep mats.

**DUAL TREADS FOR DUAL PURPOSE** Now offering the design flexibility to mix and match treads. Simply select treads for absorption, scraping or slip resistance.

### DETAILS

**MATERIAL** Aluminum

**DEPTH** 3/8 inch

**TREAD SPACING** 2 inches on center

**TREAD OPTIONS** Single or Dual

**FRAMES** Level Bed or Surface Mount

**ROLLING LOAD** 300 lbs/wheel

### MAT

MODEL	TREAD	FUNCTION	DEPTH	TRAFFIC
MQ38P	Premium Carpet	Absorbent & Scraping	3/8"	Light
MQ38R	Rugged Scrub	Scraping	3/8"	Light
MQ38V	Vinyl	Scraping	3/8"	Light
MQ38U	Ribbed Rubber	Scraping	3/8"	Light
MQ38E	EcoTread	Slip Resistant	3/8"	Light
MQ38G	Vinyl Abrasive	Slip Resistant	3/8"	Light
MQ38X	Aluminum Abrasive	Slip Resistant	3/8"	Light
MQ38A	Serrated Aluminum	Scraping	3/8"	Light
MQ38B	Brush	Scraping	3/8"	Light

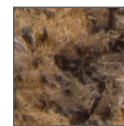
### FRAME

MODEL	MOUNTING	MATERIAL	PROFILE	DEPTH
FQ38LBC	Level Bed, Cast-In	Aluminum	1/2"	1-3/8"
FQ38SAM	Surface Mount, Mech. Fastened	Aluminum	1-5/8"	3/8"
FQ38SV	Surface Mount, Mat Attached	Vinyl	1-5/8"	3/8"
FQ38LBM	Level Bed, Mech. Fastened	Aluminum	1/8"	7/16"

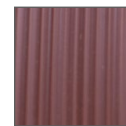
### TREAD INSERTS



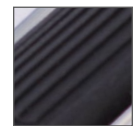
Premium Carpet



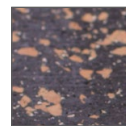
Rugged Scrub®



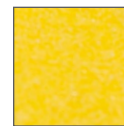
Vinyl



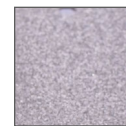
Ribbed Rubber



EcoTread™



Vinyl Abrasive Insert



Aluminum Abrasive

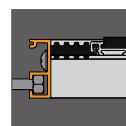


Serrated Aluminum



Brush

### FRAMES



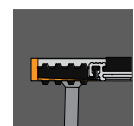
Level Bed, Cast-In



Surface Mount, Mech. Fastened



Surface, Mat Attached



Level Bed, Mech. Fastened