

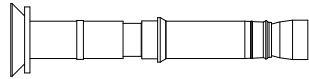
**Parking Garage Series
Model: EJ-RCP
Horizontal Expansion Control System**

The following installation procedure is very important and must be fully understood prior to beginning any work. To ensure proper installation and performance of expansion joint system the following actions must be completed by the installing contractor. Failure to do so will affect product warranty.

- 1) Carefully read and understand installation procedure.
- 2) Inspect all shipments and materials for missing or damaged components and hardware.
- 3) Inspect substrate or adjacent construction for acceptance before beginning work. Report unacceptable construction to the project manager for scheduled repair work.
- 4) Review Nystrom's shop drawings for project specific detailed information if such was provided.

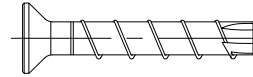
**Molded Elastomeric Hinged Cover
System for Expansion Control - 07 95 13**

Standard components



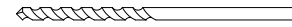
1/4" x 3 7/8" Lg Hilti HSL-3 SK 8/20
H.D. Concrete Anchor
(P/N #5717)
*** California Kits Only ***

Or

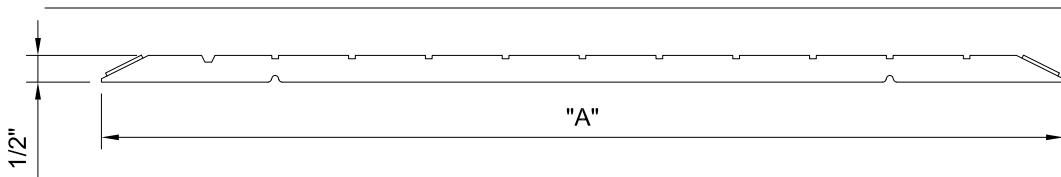


10mm x 70mm Lg. Hilti HUS3-C
H.D. Concrete Screw
(P/N #7801)
Standard Hardware

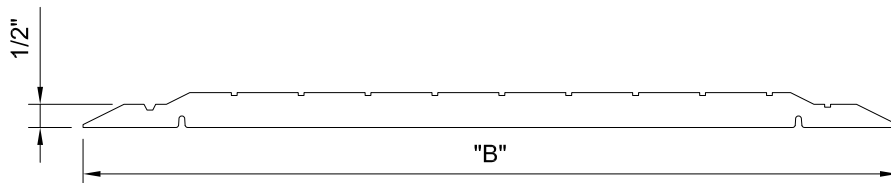
And



10mm Drill Bit (P/N #7805)
Standard Hardware

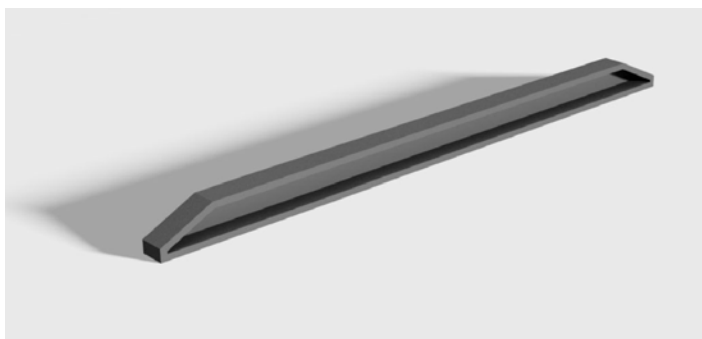


| Model # | P/N | "A" dim. | Model # | P/N | "A" dim. |
|------------------|-------|----------|-----------------|-------|----------|
| RCP-600 - Black | 19960 | 12" | RCP-600 - Grey | 19961 | 12" |
| RCP-1000 - Black | 19954 | 18" | RCP-1000 - Grey | 19955 | 18" |



| Model # | P/N | "B" dim. | Model # | P/N | "B" dim. |
|------------------|-------|----------|-----------------|-------|----------|
| RCP-1200 - Black | 19980 | 17 1/2" | RCP-1200 - Grey | 19981 | 17 1/2" |
| RCP-1800 - Black | 19970 | 23 1/2" | RCP-1800 - Grey | 19971 | 23 1/2" |
| RCP-2400 - Black | 19990 | 29 3/4" | RCP-2400 - Grey | 19991 | 29 3/4" |
| RCP-3100 - Black | 19940 | 36 3/4" | RCP-3100 - Grey | 19941 | 36 3/4" |

**Components shown below vary in size depending
on model of system**

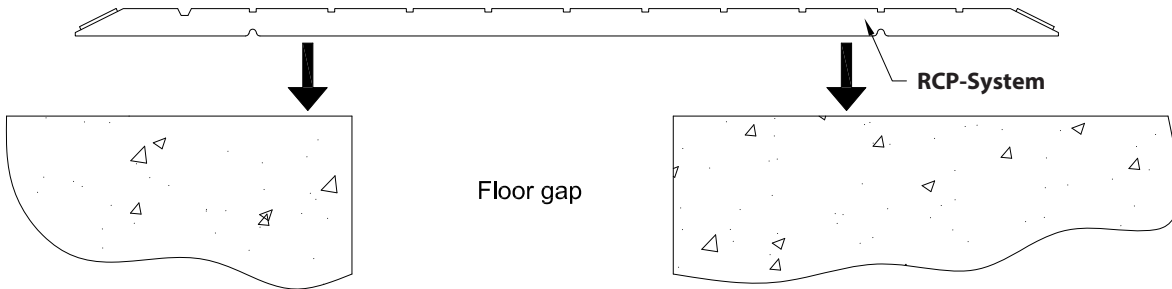


| Model # | P/N |
|------------------|-------|
| RCP-600 - Black | 19962 |
| RCP-1000 - Black | 19957 |
| RCP-1200 - Black | 19982 |
| RCP-1800 - Black | 19972 |
| RCP-2400 - Black | 19992 |
| RCP-3100 - Black | 19942 |

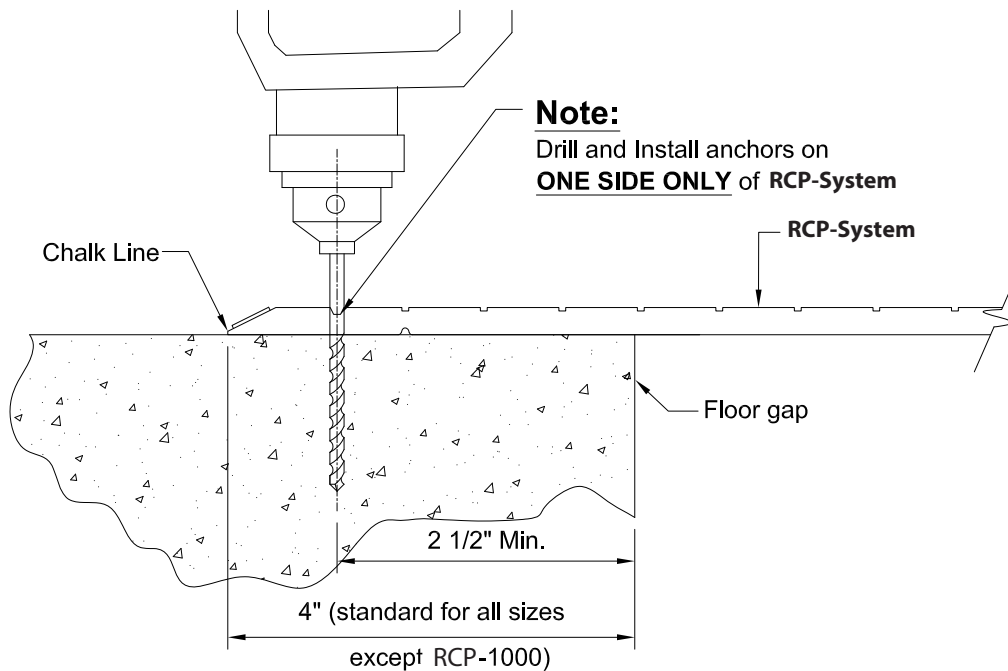
**SafetyFlex End Cap
(Refer to Chart for P/N)**

| Model # | P/N |
|-----------------|-------|
| RCP-600 - Grey | 19963 |
| RCP-1000 - Grey | 19958 |
| RCP-1200 - Grey | 19983 |
| RCP-1800 - Grey | 19973 |
| RCP-2400 - Grey | 19993 |
| RCP-3100 - Grey | 19943 |

**Molded Elastomeric Hinged Cover
System for Expansion Control - 07 95 13**

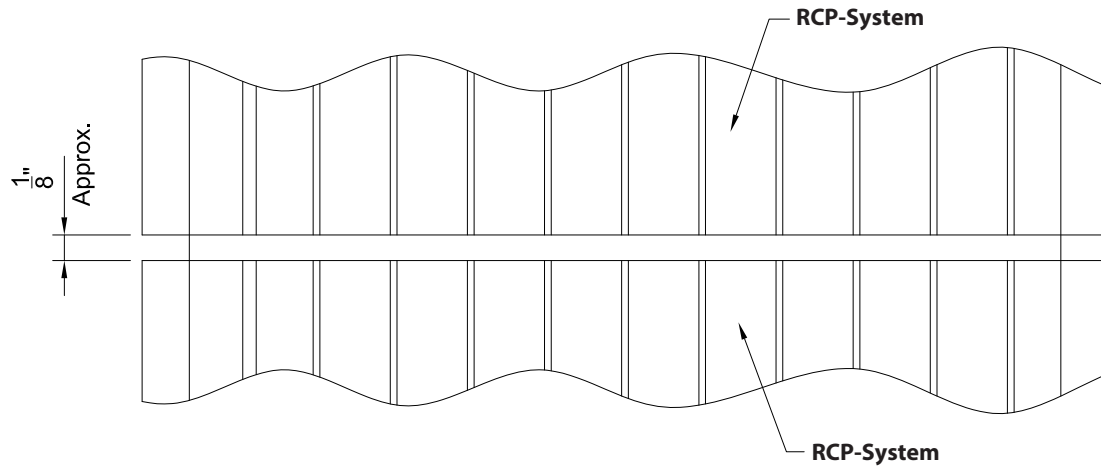


- 1** Make sure that the floor is level. High spots should be ground down and low spots filled in. If not able to level out joint opening fasten the RCP along high Side of Opening. If installing more than one piece, lay out entire run to ensure proper alignment. If a section of the RCP has been cut, apply a bead of sealant along the cut edge of the RCP to help prevent the steel Insert from rusting.

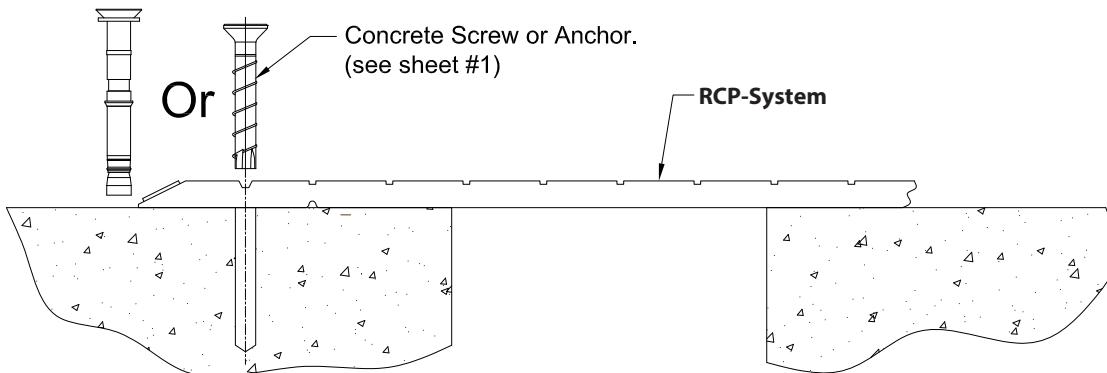


- 2** Drill end holes first. This ensures that the expansion joint will not move and alignment with other joints is obtained. Follow anchor manufacturer's recommendations for drilling operation. Drill Ø10mm holes to proper depth and clean out holes.
Notes: Refer to Hilti's website for manufacturer's recommendations for fastening

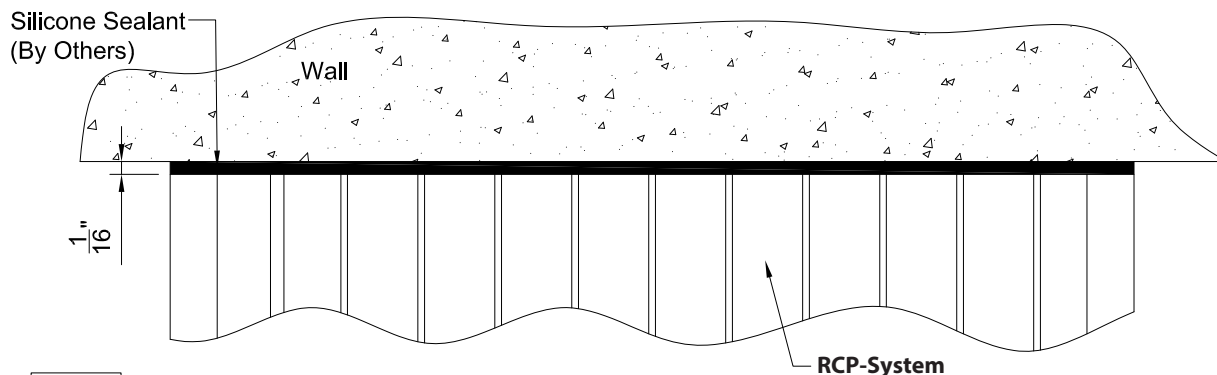
**Molded Elastomeric Hinged Cover
System for Expansion Control - 07 95 13**



3 To allow for thermal expansion of the EPDM Rubber cover, leave a 1/8" Approximate gap between RCP system sections.

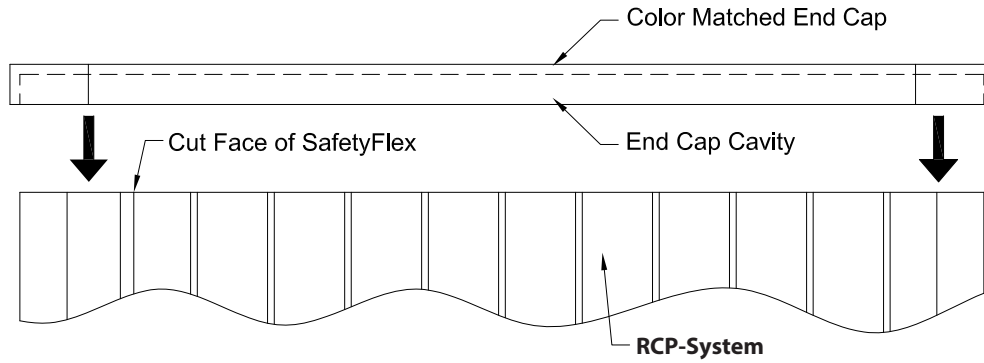


4 Follow anchor manufacturer's recommendations for proper anchor installation. Once anchors are in the end holes, drill remaining holes 16" O.C. and install anchors. Slight Compression of EPDM cover will occur when Threaded concrete anchor is tightened down.



5A For a wall termination use a portable band saw to cut Safetyflex & leave about a 1/16" gap between SafetyFlex and the wall. Fill in remaining gap with a bead of silicone sealant (By Others).

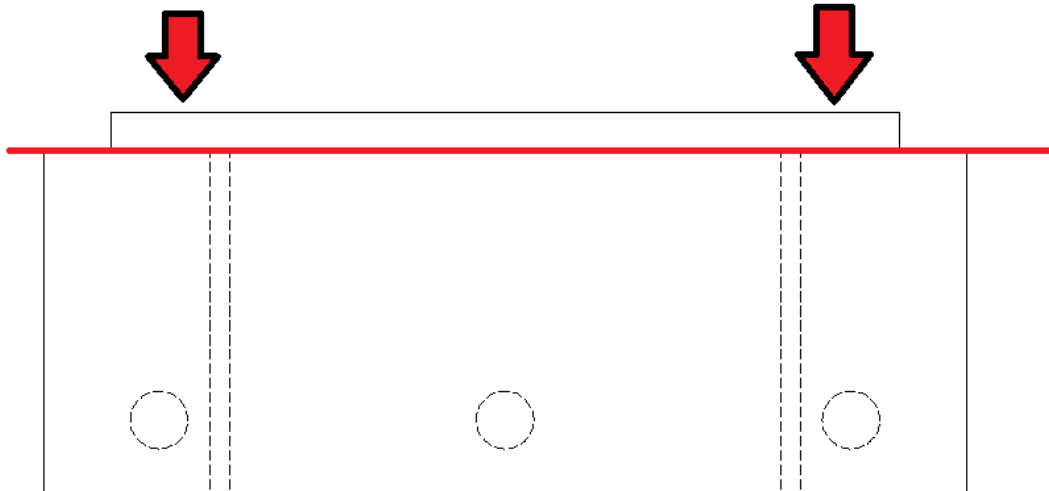
**Molded Elastomeric Hinged Cover
System for Expansion Control - 07 95 13**



5B **For End Cap use (Optional)** - Apply a bead of clear silicone (By Others) in the End Cap cavity and squeeze the end cap onto the cut face of the RCP-System



6 **Finished Edges**- Every RCP coverplate comes with a "tongue" on one and a "groove" on the other. The steps for having a 'finished edge' (as shown above) are as follows.



7

Finished Edges - Using a sliding compound miter / tile saw, cut off the tongue end (area shown above red line) at required bevel angle. Lubricate if necessary. End result should be as shown in the photo on the previous page.