

# 1/8 Inch Pan

## ARCHITECTURAL FLOOR DOOR

Nystrom's Architectural Recessed Floor Door is engineered with a recess to allow for 1/8 inch VCT flooring infill. This design preserves the architectural aesthetics while maintaining a minimal sight line.



### FEATURES

**MINIMAL SIGHT LINE** The recessed design allows for 1/8 inch VCT flooring infill to seamlessly integrate with the surrounding area.

**STEEL OPTION** Optional 3/16 inch steel for added strength and durability. Standard finish of primed gray powder coat.

### DETAILS

**LOAD** 300psf live load

#### MATERIAL

- Aluminum: 1/4 inch, mill finish with gray primer on exterior frame
- Steel: 3/16 inch, primed gray powder coat

**COVER** Recessed for 1/8 inch flooring infill

**FRAME** Angle frame with formed channel frame hinge-side only

#### INSTALLATION

- Cast In
- Bolt-In

**SPRING** Coil type 17-7 Stainless Steel enclosed in Type 316 Stainless Steel telescopic tubes

**HINGES** Heavy duty Type 316 Stainless Steel

**HOLD OPEN ARM** Type 316 Stainless Steel automatic hold open arm locks cover in open position

**LATCH** Slam latch Type 316 Stainless Steel with inside lever handle, includes removable 5/16 inch steel square "L" handle and threaded plug

### MATERIALS

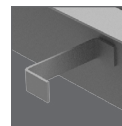


Aluminum

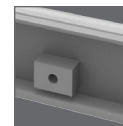


Primed Steel

### INSTALLATION



Cast-in



Bolt-in

### ORDER GUIDE

MODEL	MATERIAL	WIDTH	X	LENGTH	COVER	INSTALL	OPTIONS		
FDRP			X				L	-	
	<b>A</b> 1/4" Aluminum <b>P</b> 3/16" Steel, Primed	<b>Standard Sizes (W x L)</b> Single Door 24" x 24" 30" x 36" 36" x 36" 42" x 42"		Double Door 48" x 48" 48" x 72" 60" x 60"	<b>S</b> Single Door <b>D</b> Double Door	<b>A</b> Anchor <b>B</b> Bolt-in			Locks Finishes Gaskets Operation Safety Skirting Other