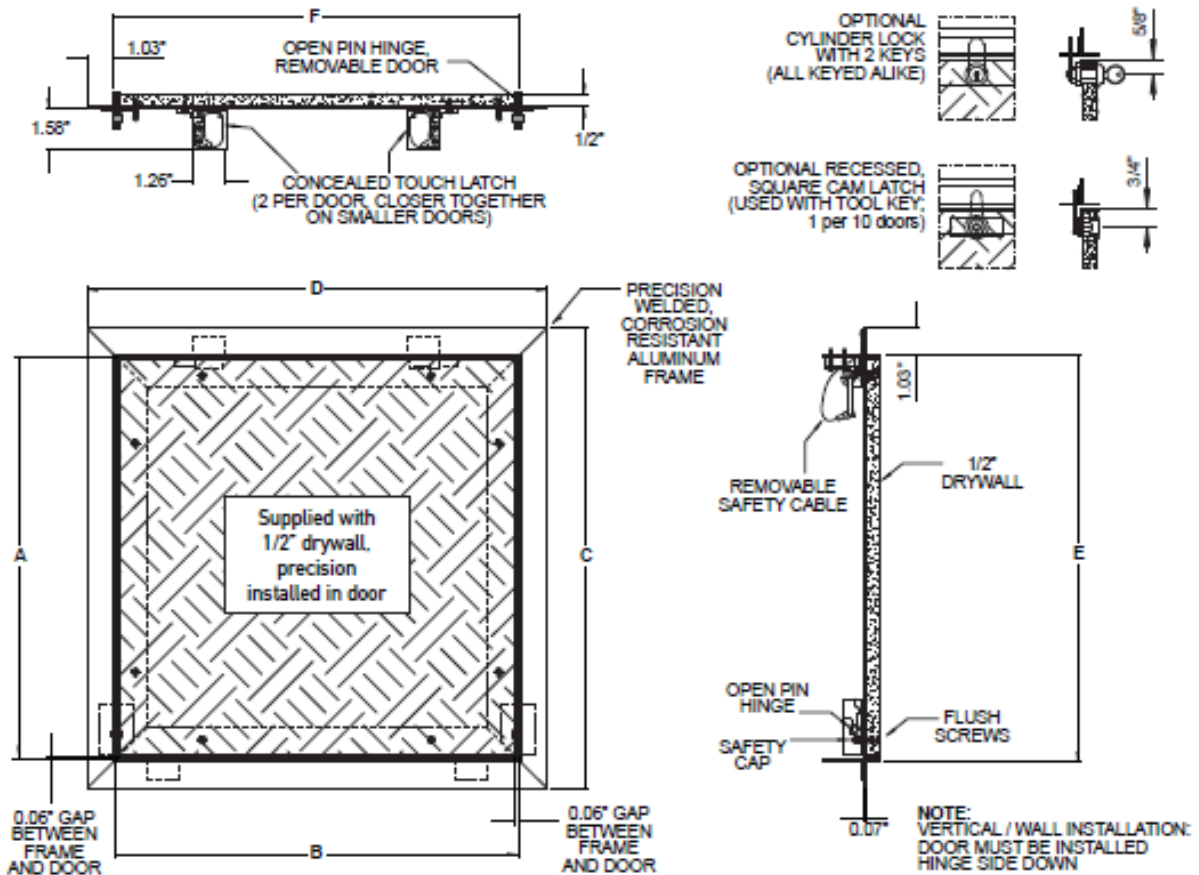


**SPECIFICATIONS:**

- CONCEALED TOUCH LATCH
- WELDED ALUMINUM FRAME
- WELDED ALUMINUM, OPEN HINGE, REMOVABLE DOOR
- PRE-INSTALLED PRECISION DRYWALL
- MILL FINISH
- NON-SNAG REMOVABLE SAFETY CABLE
- SUPPLIED TO FIT 1/2" DRYWALL
- ROUGH OPENING TO BE WIDTH/HEIGHT + 0.188"

**OPTIONS:**

- CYLINDER LOCK WITH 2 KEYS (L)
- SCREWDRIVER CAM LATCH (C)



QTY.	NOMINAL SIZE		Inch A		Inch B		Inch C		Inch D		Inch E		Inch F	
	Inch	mm	Inch	mm	Inch	mm	Inch	mm	Inch	mm	Inch	mm	Inch	mm
	8 x 8	203 x 203	8.00	203	8.00	203	10.20	258	10.20	258	8.14	207	8.14	207
	12 x 12	305 x 305	12.00	305	12.00	305	14.20	359	14.20	359	12.14	308	12.14	308
	16 x 16	406 x 406	16.00	406	16.00	406	18.20	461	18.20	461	16.14	410	16.14	410
	18 x 18	457 x 457	18.00	457	18.00	457	20.20	512	20.20	512	22.14	461	22.14	461
	20 x 20	508 x 508	20.00	508	20.00	508	22.20	562	22.20	562	20.14	512	20.14	512
	24 x 24	610 x 610	24.00	610	24.00	610	26.20	664	26.20	664	24.14	613	24.14	613
	24 x 36	610 x 915	24.00	610	36.00	915	26.20	664	38.20	969	24.14	613	36.14	919



9300 73RD AVENUE NORTH  
MINNEAPOLIS, MN 55428

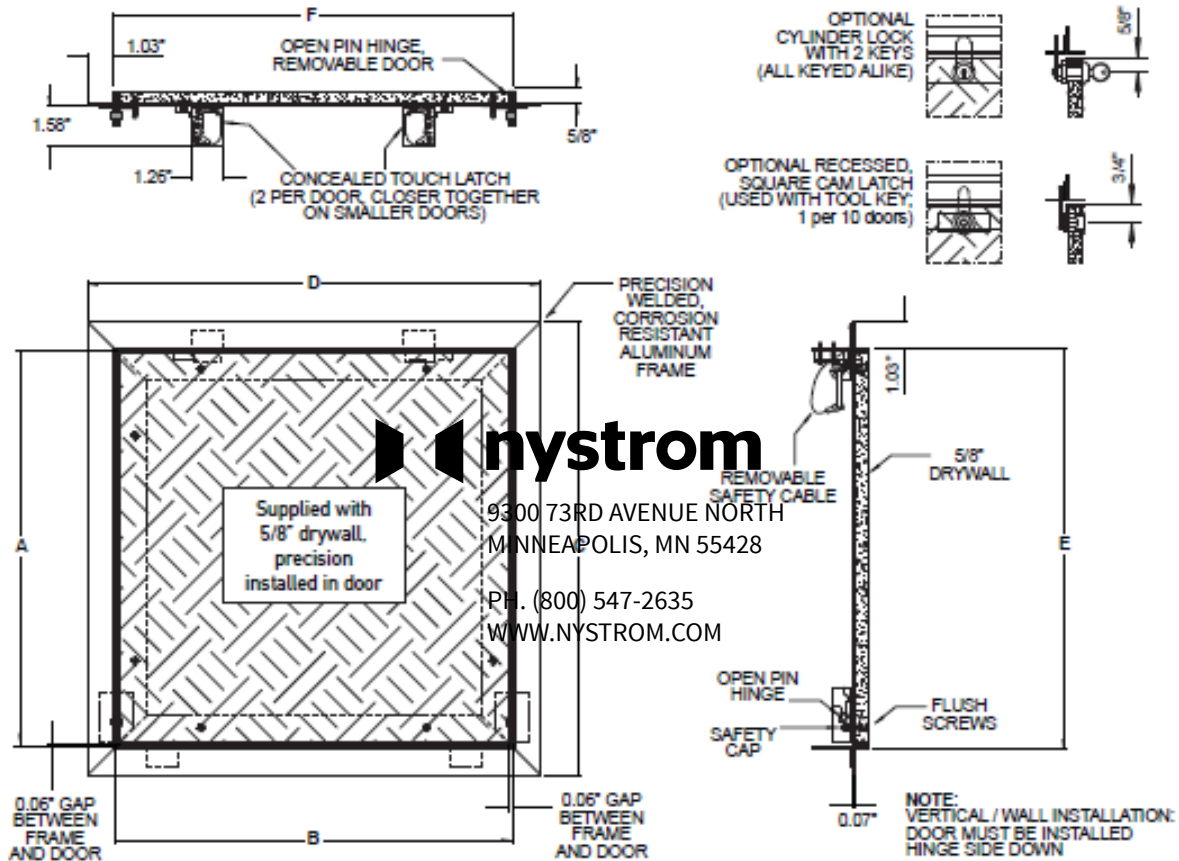
PH. (800) 547-2635  
WWW.NYSTROM.COM

**SPECIFICATIONS:**

- CONCEALED TOUCH LATCH
- WELDED ALUMINUM FRAME
- WELDED ALUMINUM, OPEN HINGE, REMOVABLE DOOR
- PRE-INSTALLED PRECISION DRYWALL
- MILL FINISH
- NON-SNAG REMOVABLE SAFETY CABLE
- SUPPLIED TO FIT 5/8" DRYWALL
- ROUGH OPENING TO BE WIDTH/HEIGHT + 0.188"

**OPTIONS:**

- CYLINDER LOCK WITH 2 KEYS (L)
- SCREWDRIVER CAM LATCH (C)



**nystrom**

9300 73RD AVENUE NORTH  
MINNEAPOLIS, MN 55428

PH. (800) 547-2635  
WWW.NYSTROM.COM

QTY.	NOMINAL SIZE		Inch A		Inch B		Inch C		Inch D		Inch E		Inch F	
	Inch	mm	Inch	mm	Inch	mm	Inch	mm	Inch	mm	Inch	mm	Inch	mm
	8 x 8	203 x 203	8.00	203	8.00	203	10.20	258	10.20	258	8.14	207	8.14	207
	12 x 12	305 x 305	12.00	305	12.00	305	14.20	359	14.20	359	12.14	308	12.14	308
	16 x 16	406 x 406	16.00	406	16.00	406	18.20	461	18.20	461	16.14	410	16.14	410
	18 x 18	457 x 457	18.00	457	18.00	457	20.20	512	20.20	512	22.14	461	22.14	461
	20 x 20	508 x 508	20.00	508	20.00	508	22.20	562	22.20	562	20.14	512	20.14	512
	24 x 24	610 x 610	24.00	610	24.00	610	26.20	664	26.20	664	24.14	613	24.14	613
	24 x 36	610 x 915	24.00	610	36.00	915	26.20	664	38.20	969	24.14	613	36.14	919

**nystrom**

9300 73RD AVENUE NORTH  
MINNEAPOLIS, MN 55428

PH. (800) 547-2635  
WWW.NYSTROM.COM