

Ribbed EcoTread

STAIR TREAD + NOSING

The single-part Ribbed EcoTread Stair Tread and Nosing is the industry's first sustainable and eco-friendly nosing. This nosing is engineered with recycled aluminum and rubber, is available in multiple color options and can be used in both interior and exterior applications.



STSB-P3E-ECO
shown

FEATURES

RECYCLED + RECYCLABLE These sustainable treads are made from 90%† recycled rubber and the entire system is 100% recyclable.

FADE + WEAR RESISTANT A durable product that will stand up to weather extremes and foot traffic.

EASY TO CLEAN + MAINTAIN These stain and chemical resistant treads are coated with a water-based protectant.

DETAILS

CHANNEL Extruded Aluminum

APPLICATION Poured Concrete, Steel Pan, Terrazzo or Wood

TREAD EcoTread

WIDTH 1-7/8, 3 or 4 inches

LENGTH Up to 12 linear feet

MOUNTING Anchor or Drilled Hole, Mech. Fastened

NOSING Short, Short-Tipped, Long or Angled

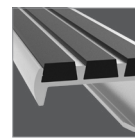
OPTIONS Photoluminescent, Vision Line, Mitered Cuts, Painted Undersides or Taped Tops

CODE COMPLIANCE 2010 ADA 504, 2015 IBC/ICC Section 1029.13.2, 2018 IBC/ICC Section 1029.14.2, and 2016 California Building Code Section 11B-504.5

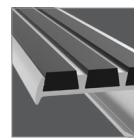
MODELS

MODEL	WIDTH	NOSING	INSTALL
STSB-C1.875E-ECO	1-7/8"	Short	Cast-In, Extruded Anchor
STSB-C1.875D-ECO	1-7/8"	Short	Drilled Hole, Mech. Fastened
STSB-P1.875E-ECO	1-7/8"	Short-Tipped	Cast-In, Extruded Anchor
STSB-P1.875D-ECO	1-7/8"	Short-Tipped	Drilled Hole, Mech. Fastened
STSB-L1.875E-ECO	1-7/8"	Long	Cast-In, Extruded Anchor
STSB-L1.875D-ECO	1-7/8"	Long	Drilled Hole, Mech. Fastened
STSB-A1.875D-ECO	1-7/8"	Angled-Long	Drilled Hole, Mech. Fastened
STSB-C3E-ECO	3"	Short	Cast-In, Extruded Anchor
STSB-C3D-ECO	3"	Short	Drilled Hole, Mech. Fastened
STSB-P3E-ECO	3"	Short-Tipped	Cast-In, Extruded Anchor

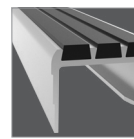
NOSING



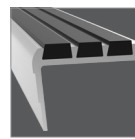
Short



Short-Tipped

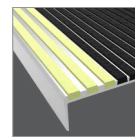


Long

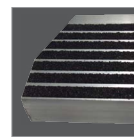


Angled

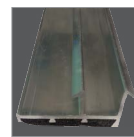
OPTIONS



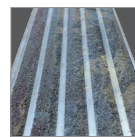
Vision Line



Mitered Cuts



Painted Undersides



Taped Tops

MODELS

MODEL	WIDTH	NOSING	INSTALL
STSB-P3D-ECO	3"	Short-Tipped	Drilled Hole, Mech. Fastened
STSB-L3E-ECO	3"	Long	Cast-In, Extruded Anchor
STSB-L3D-ECO	3"	Long	Drilled Hole, Mech. Fastened
STSB-A3E-ECO	3"	Angled-Long	Cast-In, Extruded Anchor
STSB-A3D-ECO	3"	Angled-Long	Drilled Hole, Mech. Fastened
STSB-C4E-ECO	4"	Short	Cast-In, Extruded Anchor
STSB-C4D-ECO	4"	Short	Drilled Hole, Mech. Fastened
STSB-P4E-ECO	4"	Short-Tipped	Cast-In, Extruded Anchor
STSB-P4D-ECO	4"	Short-Tipped	Drilled Hole, Mech. Fastened

Ribbed Abrasive

STAIR TREAD + NOSING

This Ribbed Abrasive Stair Tread and Nosing is the industry's most popular choice. This nosing is economical, easy to install, and perfect for indoor and outdoor applications where extra safety is desired or required by code.

FEATURES

OPTIONAL VISION LINE Customize your tread with rows of different colors. Easily mark a safe egress with UL listed photoluminescent or safety yellow fill.

CONTINUOUS COLOR No need to worry about walking off the color as the abrasive material filler is dyed throughout.

QUICK SHIP OPTION* The short-tipped nose, *model STSB-P3E*, is now available with a quick ship option in stock lengths of 4 and 6 linear feet.



STSB-P3E shown

DETAILS

CHANNEL Extruded Aluminum

APPLICATION Poured Concrete, Steel Pan, Terrazzo or Wood

TREAD Ribbed Abrasive

WIDTH 1-7/8, 3 or 4 inches

LENGTH Up to 12 linear feet

MOUNTING Anchor or Drilled Hole, Mech. Fastened

NOSING Short, Short-Tipped, Long or Angled

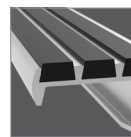
OPTIONS Photoluminescent, Vision Line, Mitered Cuts, Painted Undersides or Taped Tops

CODE COMPLIANCE 2010 ADA 504, 2015 IBC/ICC Section 1029.13.2, 2018 IBC/ICC Section 1029.14.2, and 2016 California Building Code Section 11B-504.5

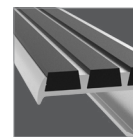
MODELS

MODEL	WIDTH	TREAD	INSTALL
STSB-C1.875E	1-7/8"	Short	Cast-In, Extruded Anchor
STSB-C1.875D	1-7/8"	Short	Drilled Hole, Mech. Fastened
STSB-P1.875E	1-7/8"	Short-Tipped	Cast-In, Extruded Anchor
STSB-P1.875D	1-7/8"	Short-Tipped	Drilled Hole, Mech. Fastened
STSB-L1.875E	1-7/8"	Long	Cast-In, Extruded Anchor
STSB-L1.875D	1-7/8"	Long	Drilled Hole, Mech. Fastened
STSB-A1.875D	1-7/8"	Angled-Long	Drilled Hole, Mech. Fastened
STSB-C3E	3"	Short	Cast-In, Extruded Anchor
STSB-C3D	3"	Short	Drilled Hole, Mech. Fastened
STSB-P3E*	3"	Short-Tipped	Cast-In, Extruded Anchor

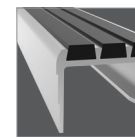
NOSING



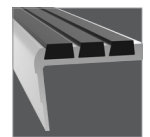
Short



Short-Tipped

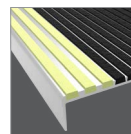


Long

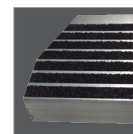


Angled

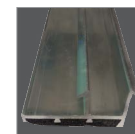
OPTIONS



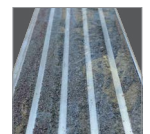
Vision Line



Mitered Cuts



Painted Undersides



Taped Tops

MODELS

MODEL	WIDTH	TREAD	INSTALL
STSB-P3D	3"	Short-Tipped	Drilled Hole, Mech. Fastened
STSB-L3E	3"	Long	Cast-In, Extruded Anchor
STSB-L3D	3"	Long	Drilled Hole, Mech. Fastened
STSB-A3E	3"	Angled-Long	Cast-In, Extruded Anchor
STSB-A3D	3"	Angled-Long	Drilled Hole, Mech. Fastened
STSB-C4E	4"	Short	Cast-In, Extruded Anchor
STSB-C4D	4"	Short	Drilled Hole, Mech. Fastened
STSB-P4E	4"	Short-Tipped	Cast-In, Extruded Anchor
STSB-P4D	4"	Short-Tipped	Drilled Hole, Mech. Fastened