

Safe-T-Lume™

STAIR TREAD + NOSING

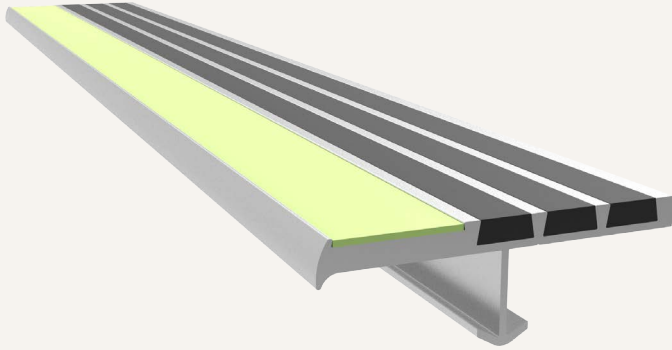
Safe-T-Lume Ribbed Bar Abrasive Stair treads are an industry leading glow-in-the-dark option. These treads are perfect for indoor and outdoor applications such as stadiums and parking garages.

FEATURES

BRIGHTNESS The embedded glow-in-the-dark photoluminescent material provides needed illumination for a safe exit. Choose between an embedded resin with superior glow or abrasive grit insert that exceeds code requirements.

DURABILITY The stair treads and nosings are long-lasting. They are designed with materials that last, like extruded aluminum and abrasive grit.

INSTALLATION EASE Installation and maintenance manuals are available at www.nystrom.com.



STSM-P3E-C1
shown



DETAILS

MATERIAL Extruded Aluminum, Abrasive Grit and 53 mil Resin or 21 mil Abrasive Grit Insert

COLOR Black and photoluminescent

APPLICATION Poured Concrete, Steel Pan, or Wood

TREAD Ribbed Abrasive or EcoTread

WIDTH 3 inches

LENGTH Up to 12 linear feet

MOUNTING Anchor or Drilled Hole, Mech. Fastened

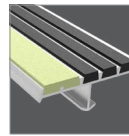
NOSING Short-Tipped

OPTIONS Mitered Cuts, Painted Undersides or Taped Tops

CODE COMPLIANCE 2015/2018 IBC Section 1025, 2015/2018 IFC Section 1025

TEST STANDARD ASTM 2072, UL 1994

NOSING



Short-Tipped

INSERT



Resin

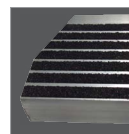


Abrasive Grit

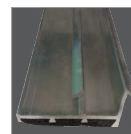


EcoTread

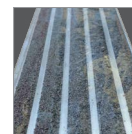
OPTIONS



Mitered Cuts



Painted Undersides



Taped Tops

MODELS

MODEL	WIDTH	INSERT	INSTALL
STSM-P3E-C1	3"	Resin	Cast-In, Extruded Anchor
STSM-P3D-C1	3"		Drilled Hole, Mech. Fastened
STSM-P3E-C1-T	3"	Abrasive Grit	Cast-In, Extruded Anchor
STSM-P3D-C1-T	3"		Drilled Hole, Mech. Fastened

MODEL	WIDTH	TREAD INSERT	INSTALL
STSM-P3E-C1-ECO	3"	EcoTread and Resin Insert	Cast-In, Extruded Anchor
STSM-P3D-C1-ECO	3"		Drilled Hole, Mech. Fastened
STSM-P3E-C1-T-ECO	3"	EcoTread and Abrasive Grit Insert	Cast-In, Extruded Anchor
STSM-P3D-C1-T-ECO	3"		Drilled Hole, Mech. Fastened