

Fire-Rated Deck

COMPRESSION SEAL (FHES2/FHES3)

Fire-retardant floor and deck foam. Nystrom's Fire-Rated Deck Compression Seal is a silicone bellow system designed with a 2- or 3-hour fire-retardant saturated foam. It is watertight, fire-rated, and has a dual sided primary seal for both new and retrofit structural expansion joints in parking deck applications.



FEATURES

FIRE-RATED The precompressed seal is composed of a fire-retardant impregnated foam that is coated on both faces.

MULTI-FUNCTIONAL This seal provides water and fire protection, color coordination, thermal insulation, sound attenuation and structural joint movement.

TRAFFIC-DURABLE This system holds up against high movement and traffic loads found in parking structures.

DETAILS

MATERIAL Silicone bellow with foam sealant

SIZE 1/2 inch to 4 inches

LENGTH 6.56 linear feet (2 meter)

APPLICATION Interior or Exterior

INSTALLATION Floor or Deck

CERTIFICATION UL 2079, ASTM E1966, E119 and E1399

COLORS Sikasil WS-295 Deck Gray

OPTIONS Terminations and Transitions

MOVEMENT

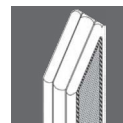
- 2-Hour: +/-50% (Total 100%)
- 3-Hour: +/-25% (Total 50%)

MATERIALS

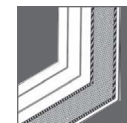


Silicone Bellow

OPTIONS



Terminations



Transitions

MODELS

2-HOUR MODEL	JOINT SIZE at mean T° F	SEAL DEPTH
FHES2-050	1/2" (12mm)	4" (100mm)
FHES2-100	1" (25mm)	4" (100mm)
FHES2-200	2" (50mm)	4" (100mm)
FHES2-300	3" (75mm)	4" (100mm)
FHES2-400	4" (100mm)	4" (100mm)

3-HOUR MODEL	JOINT SIZE at mean T° F	SEAL DEPTH
FHES3-050	1/2" (12mm)	4" (100mm)
FHES3-100	1" (25mm)	4" (100mm)
FHES3-200	2" (50mm)	4" (100mm)
FHES3-300	3" (75mm)	4" (100mm)
FHES3-400	4" (100mm)	4" (100mm)

Additional sizes available in 1/4 inch increments from 1 inch to 4 inches.