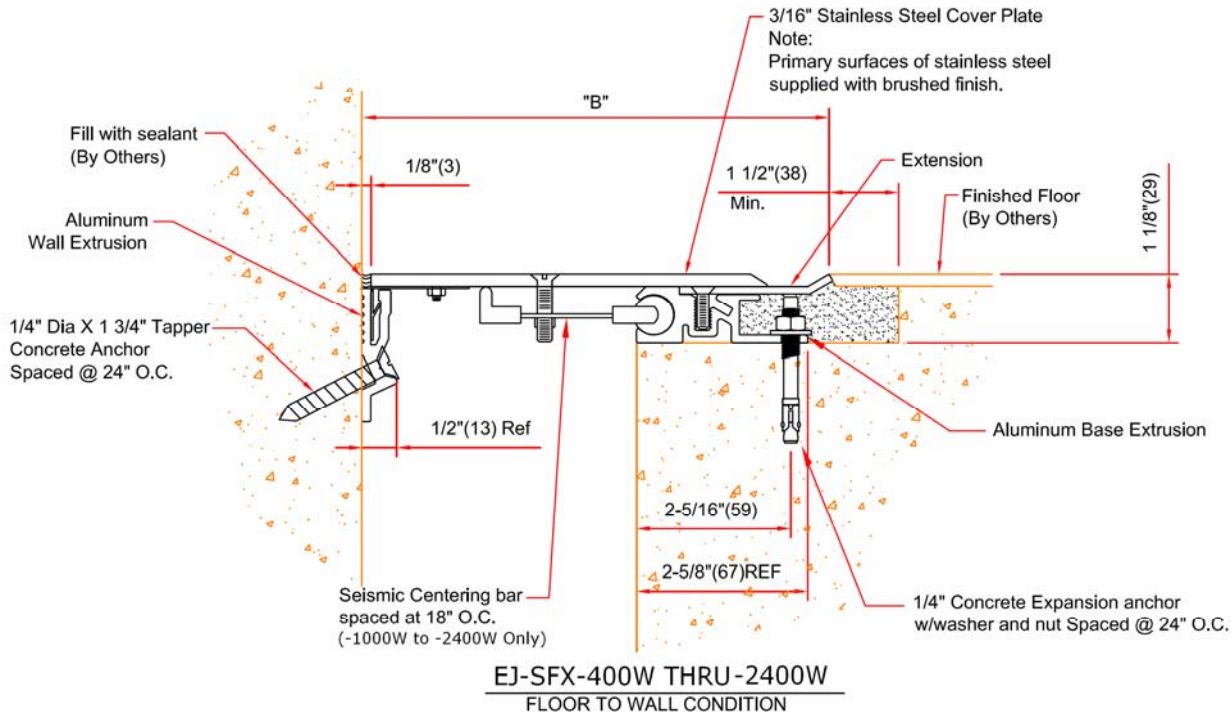


# EJ-SFX-400W to SFX-2400W

## Expansion joint cover for floors

Floor to Wall condition, 4 to 24 inch joint opening



( ) - Denotes Millimeters

DIMENSION CHART					
Model	"A" @ Min.	"A" @ Mid	"A" @ Max.	"B"	Total Movement
-SFX-400W	1" (25)	4" (102)	5 1/8" (130)	7 3/16" (183)	4 1/8" (105)
-SFX-600W	1" (25)	6" (152)	7 5/8" (194)	9 7/8" (251)	6 5/8" (168)
-SFX-800W	1" (25)	8" (203)	10 1/8" (257)	11 7/8" (302)	9 1/8" (232)
-SFX-1000W	1" (25)	10" (254)	12 5/8" (321)	14 3/8" (374)	11 5/8" (295)
-SFX-1200W	1" (25)	12" (305)	15 1/8" (384)	16 7/8" (429)	14 1/8" (359)
-SFX-1800W	1" (25)	18" (457)	22 5/8" (575)	24 7/8" (632)	21 5/8" (549)
-SFX-2400W	1" (25)	24" (607)	30 1/8" (765)	32 3/8" (822)	29 1/8" (740)

Note: Minimum And Maximum Values Are After Movement Occurs. Mid Point Value Is The Recommended Size Of Opening At Installation.



Right to site.

Call: 800-547-2635 Fax: 800-317-8770  
USA or Canada  
Web: [www.nystrom.com](http://www.nystrom.com)  
E-mail: [info@nystrom.com](mailto:info@nystrom.com)

PROJECT: \_\_\_\_\_

CONTRACTOR: \_\_\_\_\_

ARCHITECT: \_\_\_\_\_

INITIALS: \_\_\_\_\_

QTY: \_\_\_\_\_

DATE: \_\_\_\_\_

PART NUMBER: \_\_\_\_\_