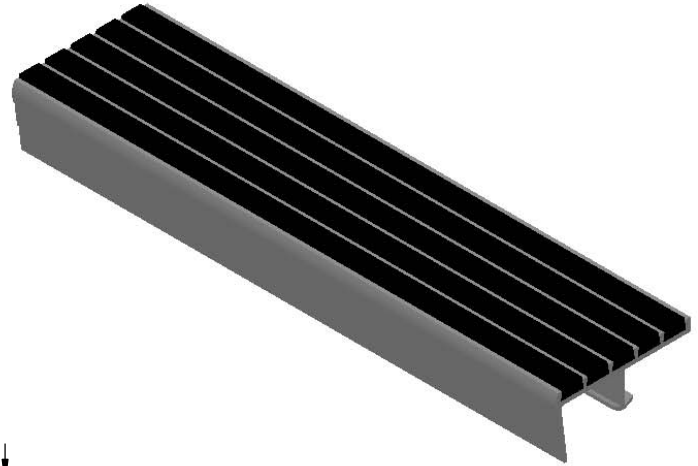
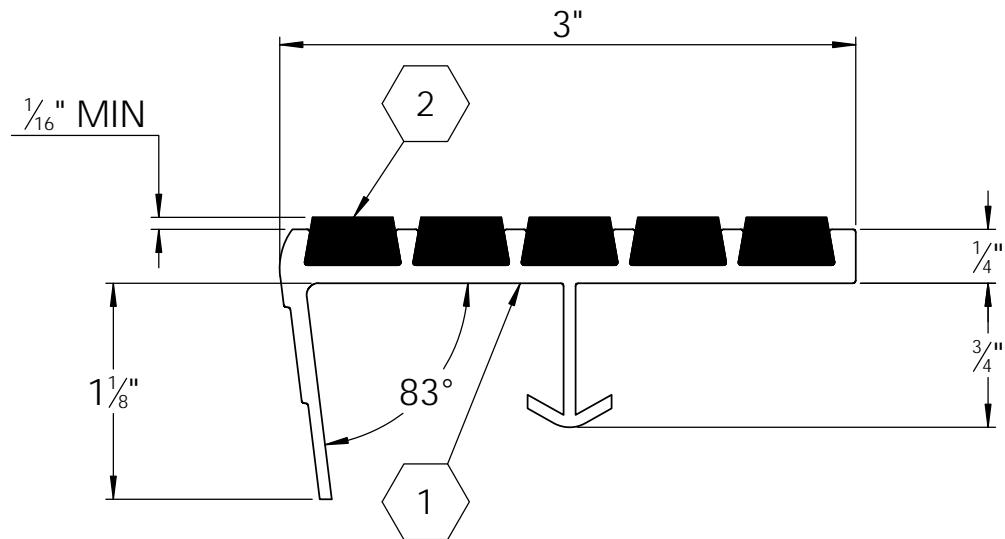


B

B




MODEL A3E

(SINGLE STAGE RIBBED ABRASIVE BARS)

SPECIFICATIONS:

- ① **BASE:** EXTRUDED ALUMINUM ALLOY 6063 T-5
- ② **ABRASIVE:** ALUMINUM OXIDE SILICON CARBIDE GRANULES IN A UV PROTECTED, 2 PART EPOXY, LOCKED INTO EXTRUDED CHANNELS
- 3. **BASE FINISH:** MILL
- 4. **POURED CONCRETE STAIRS:** NOSING SHALL TERMINATE NO MORE THEN 3" FROM END OF STEPS
- 5. **CONCRETE FILLED STEEL PAN STAIRS:** NOSING SHALL BE FULL LENGTH OF STEPS, LESS 1/8" CLEARANCE
- 6. **COLOR:** BLACK (STANDARD), SAFETY YELLOW, GRAY, RED, BROWN, GREEN, BURGUNDY, BLUE, BUFF, LUMINESCENT
- 7. **LENGTH:** 12'0" MAXIMUM
- 8. **UL 1994 LISTED:** COMBINED WIDTH OF PHOTO-LUMINESCENT MATERIAL SHALL NOT BE LESS THAN 1"

LENGTH	QTY	COLOR

PROJECT:					
ARCHITECT:					
CONTRACTOR:					
QTY:					
PART#:		STSB-A3E			
 9300 73rd Avenue North Minneapolis, MN 55428		TITLE:			
		V851, Stair Tread, Bar Ribbed Abrasive, Long Nose Angled, Alum Extruded Anchor,			
NAME	DATE	SIZE	DWG. NO.	REV	
DRAWN	BMH	3/11/11	A	Nystrom STN STSB-A3E ShpDr	A
RELEASED	PE	3/11/11	WEIGHT: 1.33 LB	SHEET 1 OF 1	

PROPRIETARY AND CONFIDENTIAL: THE INFORMATION CONTAINED IN THIS DRAWING IS THE SOLE PROPERTY OF NYSTROM. ANY REPRODUCTION IN PART OR AS A WHOLE WITHOUT THE WRITTEN PERMISSION OF NYSTROM IS PROHIBITED.