

# Surface Mount

## FLOOR DOOR, 150PSF

The Surface Mount Floor Door is designed for retrofit applications with internal flanges for easy mounting. This door is an economical option for areas where water or moisture intrusion is not a concern.

### FEATURES

**SURFACE MOUNT** Constructed with an interior angle frame (flange) for easy bolting to an opening in the floor.

**SECURITY CLOSURE** Built with an external padlock hasp for secure closure when not in use ensuring safety from falls, theft and vandalism.



### DETAILS

**LOAD** 150psf live load

**MATERIAL** Aluminum: 3/16 inch, mill finish with gray primer on exterior frame

**COVER** Diamond tread plate

**FRAME** Interior angle (flange)

**INSTALLATION** Surface mount, mechanically fastened

**SPRING** Coil Type 17-7 Stainless Steel, enclosed in Type 316 Stainless Steel telescopic tubes

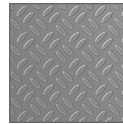
**HINGES** Heavy duty Type 316 Stainless Steel

**HOLD OPEN ARM** Type 316 Stainless Steel automatic hold open arm with red vinyl grip handle, locks cover in open position

**LATCH** Slam latch Type 316 Stainless Steel with inside lever handle, includes removable 5/16 inch steel square "L" handle and threaded plug

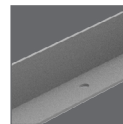
**GASKET** EPDM, around door perimeter

### MATERIALS



Aluminum

### INSTALLATION



Surface Mount

### ORDER GUIDE

MODEL	WIDTH	X	LENGTH	OPTIONS		
FDNLA		X		SELN	-	
	Standard Sizes (W x L)					Locks Finishes Gaskets Operation Safety Skirting Other
	24" x 24"					
	30" x 30"					
	30" x 36"					
	36" x 36"					
	42" x 42"					