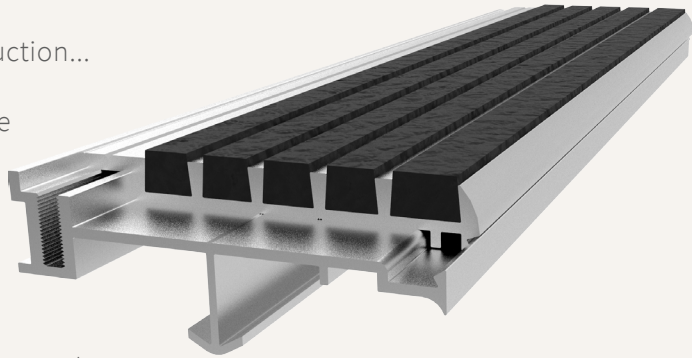


Two-Part

STAIR TREAD + NOSING

Save the life of your stair nosings during construction...

Nystrom's Two-Part Stair Treads and Nosings are designed to save your nosings from damage during the construction process. The sub-channel and plywood inserts are installed during the construction phase. When the building is near completion, the temporary plywood tread is replaced with the final install of the abrasive anti-slip safety material.



FEATURES

EASY TREAD REPLACEMENT Easily replace worn or damaged treads by unscrewing the existing tread, slide the new one in and fasten to the base.

CONTINUOUS COLOR No need to worry about walking off the color as the abrasive material filler is dyed throughout.

DETAILS

CHANNEL Extruded Aluminum

APPLICATION Poured Concrete, or Steel Pan

TREAD Ribbed Abrasive or Full Abrasive

WIDTH 3-3/8 Inches

LENGTH Up to 12 linear feet

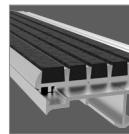
MOUNTING Anchor

NOSING Short-Tipped

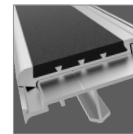
OPTIONS Photoluminescent, Vision Line, Mitered Cuts, Painted Undersides or Taped Tops

COMPLIANCE ADA and 2016 ICC Requirements

TREAD

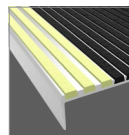


Ribbed Abrasive

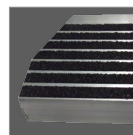


Full Abrasive

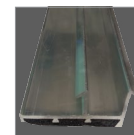
OPTIONS



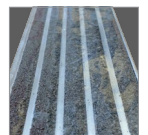
Vision Line



Mitered Cuts



Painted Undersides



Taped Tops

MODELS

MODEL	WIDTH	TREAD	WIDTH	INSTALL
STTB-3.375E	3-3/8"	Ribbed Abrasive	3-3/8"	Extruded Anchor
STTF-3.375E	3-3/8"	Full Abrasive	3-3/8"	Extruded Anchor