

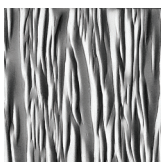


Right to site.

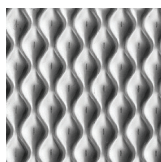
Wall & Door Protection Stainless Steel Pattern Guide



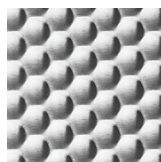
The #4 satin finish comes standard in 16 gauge thickness for both type #304 and #430 stainless steel. Embossed stainless steel is available in type #304 stainless. Thickness varies depending on the pattern.



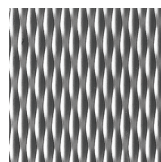
Wave



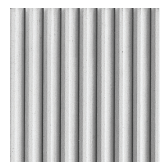
Bounce



Honeycomb



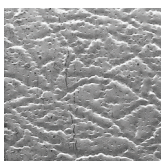
Rice



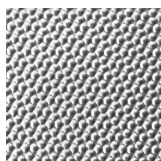
Pinstripe



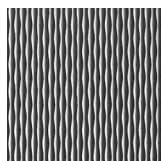
Cobblestone



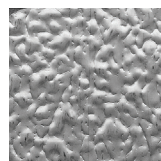
Leather



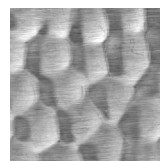
Pebble



Basket Weave



Stucco



Hammered



#4 Satin