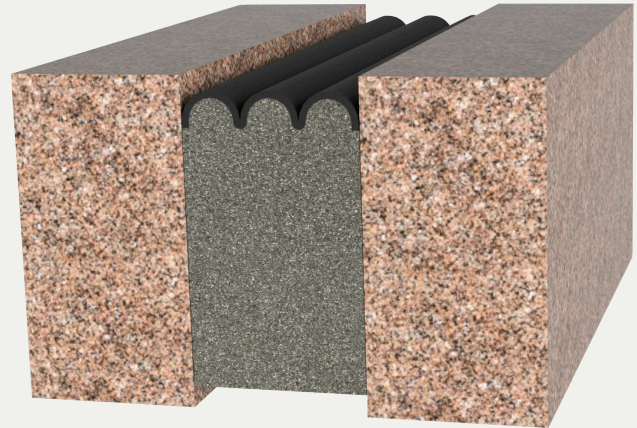


Seismic Pre-Compressed Highway Foam System

RECESSED APPLICATION (DOT)



BENEFITS

WATERTIGHT This primary seal creates a watertight joint system for Bridges and Highways

TRAFFIC-DURABLE This system holds up against high movement and traffic loads found in parking structures

DETAILS

MATERIAL Foam with Silicone Bellow

SIZE 1/2 inch to 3 inches

- Sizes available in 1/4-inch increments from 1 to 3 inches

LENGTH 6.56 linear feet (2m)

APPLICATION Interior or Exterior

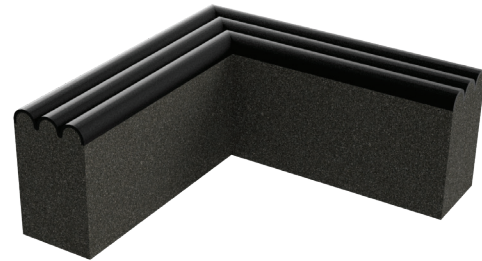
INSTALLATION Slab or Deck

OPTIONS Terminations, Transitions, Seal Depths, and Dual Sided

MOVEMENT +/- 50% (Total 100%)

OPTIONS

TRANSITIONS



ORDER GUIDE

MODEL	APPLICATION	JOINT SIZE AT MEAN T°F	SEAL DEPTH
EJN-DOT-050	Deck to Deck/Corner	1/2" (13mm)	2" (51mm)
EJN-DOT-063	Deck to Deck/Corner	3/8" (16mm)	2" (51mm)
EJN-DOT-075	Deck to Deck/Corner	3/4" (19mm)	2" (51mm)
EJN-DOT-100	Deck to Deck/Corner	1" (25mm)	2" (51mm)
EJN-DOT-200	Deck to Deck/Corner	2" (51mm)	3" (76mm)
EJN-DOT-300	Deck to Deck/Corner	3" (76mm)	3" (76mm)

Additional options available, email info@nystrom.com for more information.

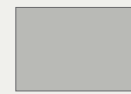
COLORS



Traffic Grade
Black
Standard



Highway
Gray



Concrete
Gray