

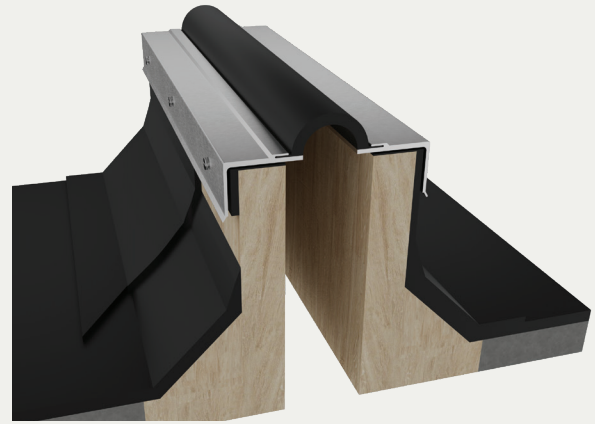
Roof Bellow System

CURB APPLICATION (ECF/ECFw)

BENEFITS

EASY TRANSITIONS Water and weathertight factory manufactured transitions available

FLANGE STYLE Galvanized steel flange also available in copper, stainless steel and aluminum



DETAILS

MATERIAL 60-mil EPDM Bellows with Metal Flanges

MOVEMENT

- Thermal: Horizontal and Vertical
- Seismic: Lateral Shear

MOUNTING Surface

JOINT SIZE 1 Inch to 8 Inches

LENGTH 10 Linear Feet (Open Carton Fees may apply)

APPLICATION Exterior

INSTALLATION Roof

OPTIONS Additional sizes and material options available upon request

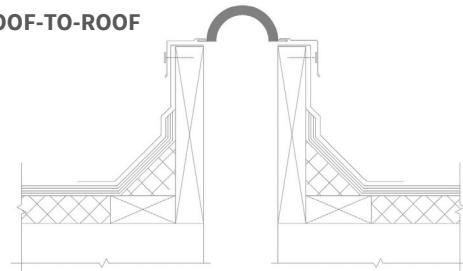
ORDER GUIDE

MODEL	APPLICATION	JOINT SIZE AT MEAN T°F	TOTAL MOVEMENT
EJN-ECF-100	Roof to Roof	1" (25mm)	1" (25mm)
EJN-ECF-200	Roof to Roof	2" (51mm)	2" (51mm)
EJN-ECF-300	Roof to Roof	3" (76mm)	3" (76mm)
EJN-ECF-400	Roof to Roof	4" (102mm)	4" (102mm)
EJN-ECF-500	Roof to Roof	5" (127mm)	5" (127mm)
EJN-ECF-600	Roof to Roof	6" (152mm)	6" (152mm)
EJN-ECF-700	Roof to Roof	7" (178mm)	7" (178mm)
EJN-ECF-800	Roof to Roof	8" (203mm)	8" (203mm)
EJN-ECF-100W	Roof to Wall	1" (25mm)	1" (25mm)
EJN-ECF-200W	Roof to Wall	2" (51mm)	2" (51mm)
EJN-ECF-300W	Roof to Wall	3" (76mm)	3" (76mm)
EJN-ECF-400W	Roof to Wall	4" (102mm)	4" (102mm)
EJN-ECF-500W	Roof to Wall	5" (127mm)	5" (127mm)
EJN-ECF-600W	Roof to Wall	6" (152mm)	6" (152mm)
EJN-ECF-700W	Roof to Wall	7" (178mm)	7" (178mm)
EJN-ECF-800W	Roof to Wall	8" (203mm)	8" (203mm)

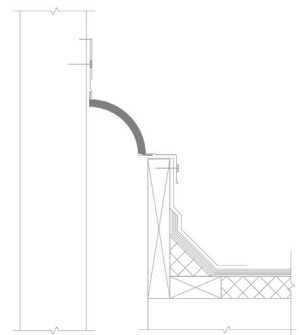
Additional options available, email info@nystrom.com for more information.

INSTALLATION

ROOF-TO-ROOF



ROOF-TO-WALL



For more information, download our Installation and Operating Manuals (IOM) and Shop Drawings on Nystrom.com