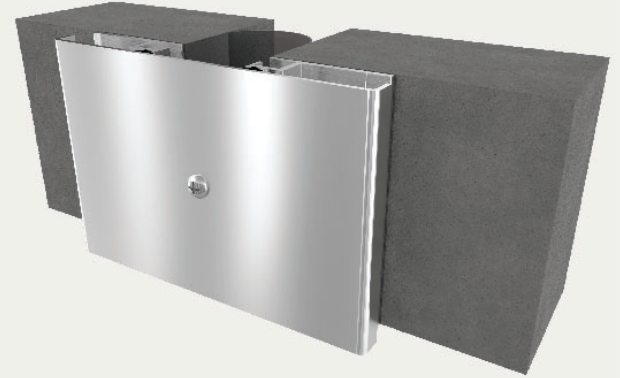


Seismic Aluminum Wall System

EXTERIOR APPLICATION (RJE/RJEw)



BENEFITS

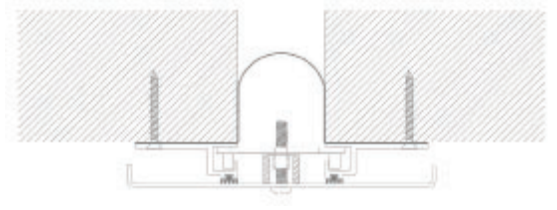
- SEISMIC MOVEMENT** System realigns itself with the self-centering bar, maintaining a safe, clean look.
- WEATHER RESISTANT** The combination of the cover plate and the moisture barrier ensures the elements are kept outside.

DETAILS

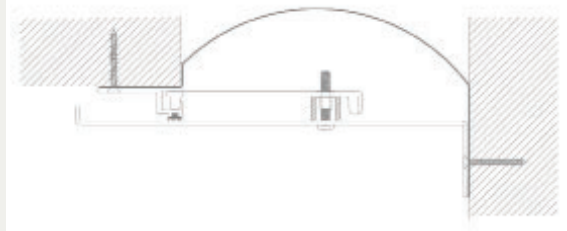
- MATERIAL**
6063-T5 Aluminum, Meets ASTM B221
6061-T6 Aluminum, Meets ASTM B209
5052 H32 Aluminum, Meets ASTM B209
- FINISH** Mill
- MOVEMENT**
Thermal: Horizontal and Vertical
Seismic: Lateral Shear
- MOUNTING** Surface
- JOINT SIZE** 2 inches to 24 inches, see website for sizes larger than 12 inches
- LENGTH** 10 Linear Feet
- APPLICATION** Exterior
- INSTALLATION** Wall or Ceiling
- OPTIONS** Fire barrier, Additional Materials, Sizes and Finishes available upon request

INSTALLATION

WALL TO WALL



WALL TO CORNER



For more information, download our Installation and Operating Manuals (IOM) and Shop Drawings on nystrom.com

ORDER GUIDE

MODEL	APPLICATION	JOINT SIZE AT MEAN T°F	EXPOSED SIGHT LINE	TOTAL MOVEMENT
EJN-RJE-200	Wall/Ceiling to Wall/Ceiling	2" (51mm)	7" (178mm)	2" (51mm)
EJN-RJE-400	Wall/Ceiling to Wall/Ceiling	4" (102mm)	10" (255mm)	4" (102mm)
EJN-RJE-600	Wall/Ceiling to Wall/Ceiling	6" (152mm)	12" (305mm)	6" (152mm)
EJN-RJE-800	Wall/Ceiling to Wall/Ceiling	8" (203mm)	14" (356mm)	8" (203mm)
EJN-RJE-1000	Wall/Ceiling to Wall/Ceiling	10" (254mm)	17" (432mm)	10" (254mm)
EJN-RJE-1200	Wall/Ceiling to Wall/Ceiling	12" (305mm)	20" (508mm)	12" (305mm)
EJN-RJE-200W	Wall/Ceiling to Corner	2" (51mm)	4.5" (114mm)	1" (25mm)
EJN-RJE-400W	Wall/Ceiling to Corner	4" (102mm)	7" (178mm)	2" (51mm)
EJN-RJE-600W	Wall/Ceiling to Corner	6" (152mm)	9" (228mm)	3" (76mm)
EJN-RJE-800W	Wall/Ceiling to Corner	8" (203mm)	11" (280mm)	4" (102mm)
EJN-RJE-1000W	Wall/Ceiling to Corner	10" (254mm)	13.5" (343mm)	5" (127mm)
EJN-RJE-1200W	Wall/Ceiling to Corner	12" (305mm)	16" (406mm)	6" (152mm)

Sizes up to 24 inches available. See the full order guide at nystrom.com, or email info@nystrom.com for more information.