

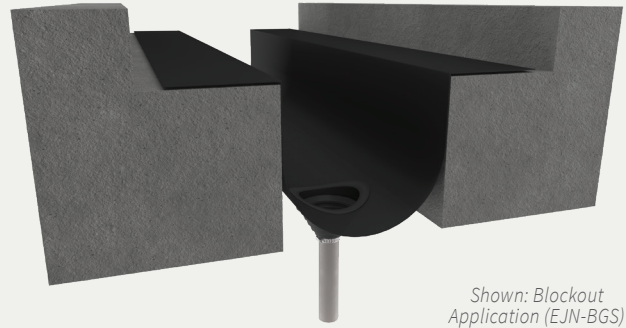
Moisture Barrier System

MULTI APPLICATION (BLOCKOUT BGS / RECESSED RGS / UNDERSLAB UGS)

BENEFITS

DESIGN Complete moisture barrier system for blockout, recessed and underslab applications.

VERSATILE Readily available in multiple widths and lengths and with flat bar and termination bar accessories.



Shown: Blockout Application (EJN-BGS)

DETAILS

MATERIAL 60A Durometer Neoprene

FINISH Black

MOVEMENT

- Thermal: Horizontal and Vertical
- Seismic: Lateral Shear

MOUNTING Blockout, Recessed, or Underslab

JOINT SIZE 2 to 26 inches

LENGTH 50 ft or 100 ft

APPLICATION Interior and Exterior

INSTALLATION Floor, Slab and Wall

OPTIONS Drain Tube Assembly, Termination Bars

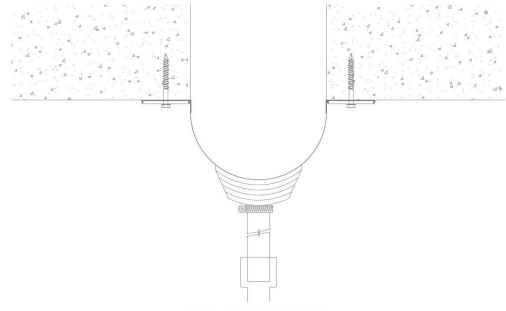
ORDER GUIDE

MODEL	JOINT OPENING AT INSTALLATION	AVAILABLE SIZES	WIDTH	THICKNESS
21941	2" (51mm) to 3" (76mm)	100 ft roll	12" (305mm)	.062"
21942		50 ft roll		
21943	4" (102mm) to 6" (152mm)	100 ft roll	18" (457mm)	.062"
21944		50 ft roll		
21945	7" (178mm) to 10" (254mm)	100 ft roll	24" (610mm)	.062"
21946		50 ft roll		
21947	11" (279mm) to 18" (457mm)	100 ft roll	36" (914mm)	.062"
21948		50 ft roll		
21949	19" (483mm) to 26" (660mm)	100 ft roll	48" (1219mm)	.062"
21950		50 ft roll		

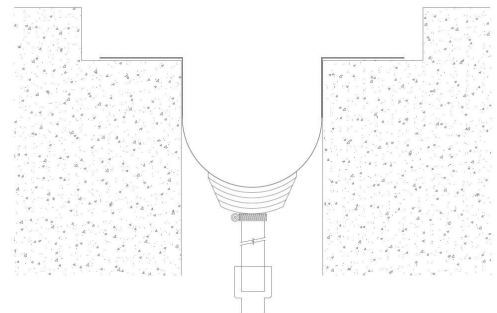
Additional options available, email info@nystrom.com for more information.

INSTALLATION

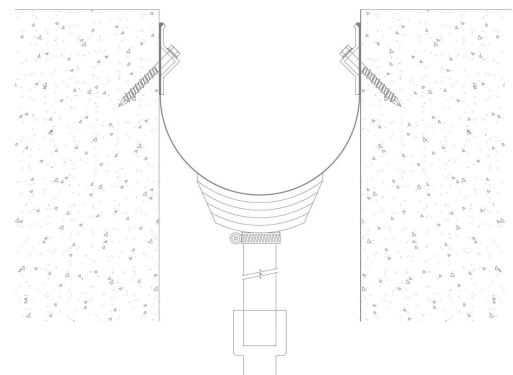
UNDERSLAB APPLICATION (UGS)



BLOCKOUT APPLICATION (BGS)



RECESSED APPLICATION (RGS)



For more information, download our Installation and Operating Manuals (IOM) and Shop Drawings on nystrom.com