

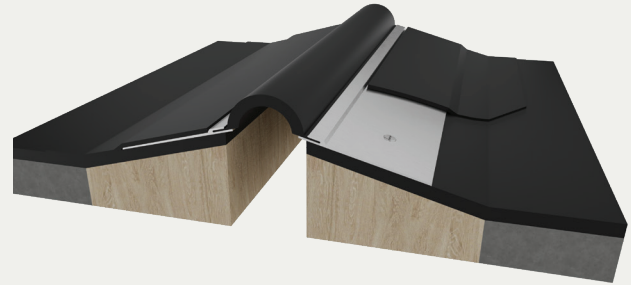
Roof Bellow System

CANT APPLICATION (EEJ/EEJw)

BENEFITS

EASY TRANSITIONS Water and weathertight factory manufactured transitions available.

FLANGE STYLE Galvanized steel flange also available in copper, stainless steel and aluminum



DETAILS

MATERIAL 60-mil EPDM Bellows with Metal Flanges

MOVEMENT

- Thermal: Horizontal and Vertical
- Seismic: Lateral Shear

MOUNTING Surface

JOINT SIZE 1 to 8 Inches

LENGTH

10 Linear Feet Increments Available (Open Carton Fees may apply)

50 Linear Feet (8 inch bellow or less only)

100 Linear Feet (8 inch bellow or less only – available upon request)

APPLICATION Exterior

INSTALLATION Roof

OPTIONS Additional size and material options available upon request

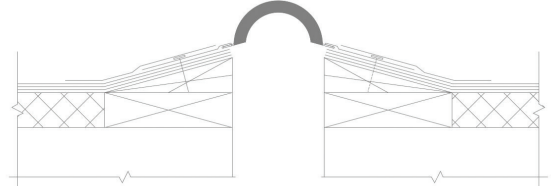
ORDER GUIDE

MODEL	APPLICATION	JOINT SIZE AT MEAN T°F	TOTAL MOVEMENT
EJN-EEJ-100	Roof to Roof	1" (25mm)	1" (25mm)
EJN-EEJ-200	Roof to Roof	2" (51mm)	2" (51mm)
EJN-EEJ-300	Roof to Roof	3" (76mm)	3" (76mm)
EJN-EEJ-400	Roof to Roof	4" (102mm)	4" (102mm)
EJN-EEJ-500	Roof to Roof	5" (127mm)	5" (127mm)
EJN-EEJ-600	Roof to Roof	6" (152mm)	6" (152mm)
EJN-EEJ-700	Roof to Roof	7" (178mm)	7" (178mm)
EJN-EEJ-800	Roof to Roof	8" (203mm)	8" (203mm)
EJN-EEJ-1000	Roof to Roof	10" (254mm)	10" (254mm)
EJN-EEJ-100W	Roof to Wall	1" (25mm)	1" (25mm)
EJN-EEJ-200W	Roof to Wall	2" (51mm)	2" (51mm)
EJN-EEJ-300W	Roof to Wall	3" (76mm)	3" (76mm)
EJN-EEJ-400W	Roof to Wall	4" (102mm)	4" (102mm)
EJN-EEJ-500W	Roof to Wall	5" (127mm)	5" (127mm)
EJN-EEJ-600W	Roof to Wall	6" (152mm)	6" (152mm)
EJN-EEJ-700W	Roof to Wall	7" (178mm)	7" (178mm)
EJN-EEJ-800W	Roof to Wall	8" (203mm)	8" (203mm)
EJN-EEJ-1000W	Roof to Wall	10" (254mm)	10" (254mm)

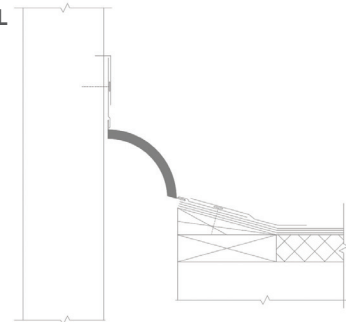
Additional options available, email info@nystrom.com for more information.

INSTALLATION

ROOF-TO-ROOF



ROOF-TO-WALL



For more information, download our Installation and Operating Manuals (IOM) and Shop Drawings on Nystrom.com