



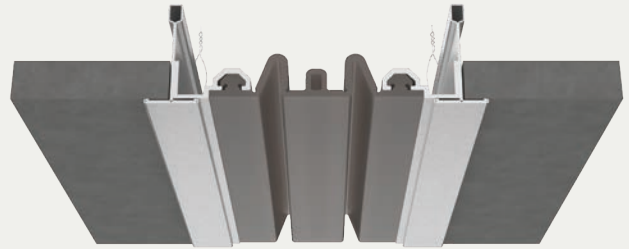
## Seismic Elastomeric Corridor Ceiling System

### ACOUSTICAL TILE APPLICATION (LCE/LCEw)

#### BENEFITS

**ACOUSTIC CEILING** Fully integrated with suspended ceiling grid system.

**MAXIMUM MOVEMENT** "V" seal design allows for maximum thermal and seismic movement.



#### DETAILS

**MATERIAL** 6063-T6 Aluminum, Meets ASTM B209

**FINISH** Mill

#### MOVEMENT

Thermal: Horizontal and Vertical

Seismic: Lateral Shear

**MOUNTING** Flush, Suspended

**JOINT SIZE** 2 inches to 6 inches

**LENGTH** Aluminum 10 Linear Feet, Seals Longest Practical Continuous Length

**APPLICATION** Interior

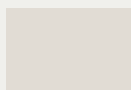
**INSTALLATION** Ceiling

**OPTIONS** Additional Materials, Sizes and Finishes available upon request

#### SEAL COLORS



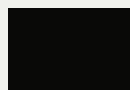
Beige



White



Gray



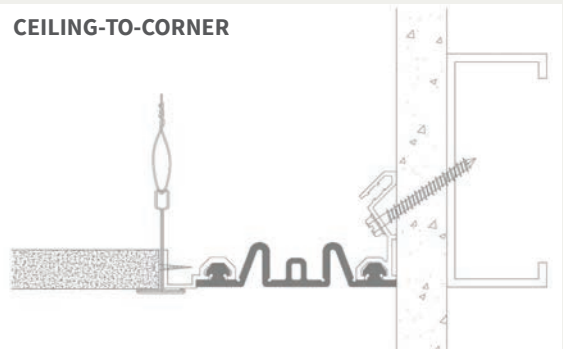
Black

#### INSTALLATION

##### CEILING-TO-CEILING



##### CEILING-TO-CORNER



For more information, download our Installation and Operating Manuals (IOM) and Shop Drawings on [nystrom.com](http://nystrom.com)

#### ORDER GUIDE

MODEL	APPLICATION	JOINT SIZE AT MEAN T°F	EXPOSED SIGHT LINE	TOTAL MOVEMENT
EJN-LCE-200	Ceiling to Ceiling	2" (51mm)	Varies Due To T-Grid	2" (51mm)
EJN-LCE-300	Ceiling to Ceiling	3" (76mm)	Varies Due To T-Grid	3" (76mm)
EJN-LCE-400	Ceiling to Ceiling	4" (102mm)	Varies Due To T-Grid	4" (102mm)
EJN-LCE-500	Ceiling to Ceiling	5" (127mm)	Varies Due To T-Grid	5" (127mm)
EJN-LCE-600	Ceiling to Ceiling	6" (152mm)	Varies Due To T-Grid	6" (152mm)
EJN-LCE-200W	Ceiling to Ceiling Corner	2" (51mm)	Varies Due To T-Grid	2" (51mm)
EJN-LCE-300W	Ceiling to Ceiling Corner	3" (76mm)	Varies Due To T-Grid	3" (76mm)
EJN-LCE-400W	Ceiling to Ceiling Corner	4" (102mm)	Varies Due To T-Grid	4" (102mm)
EJN-LCE-500W	Ceiling to Ceiling Corner	5" (127mm)	Varies Due To T-Grid	5" (127mm)
EJN-LCE-600W	Ceiling to Ceiling Corner	6" (152mm)	Varies Due To T-Grid	6" (152mm)

Additional sizes available, email [info@nystrom.com](mailto:info@nystrom.com) for more information.