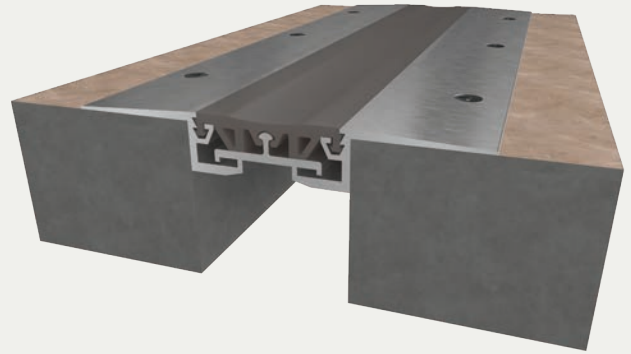




Elastomeric Corridor Flooring System

SURFACE APPLICATION (LCFS/LCFSw)



BENEFITS

COORDINATING CORNERS Available with corner option for a complete floor solution.

COMPLEMENTARY SEAL COLORS Available in four elastomeric colors: beige, white, gray or black.

DETAILS

MATERIAL 6063-T5 Aluminum, Meets ASTM B221 and Santoprene

FINISH Mill

MOVEMENT Thermal: Horizontal

MOUNTING Surface

JOINT SIZE 1 inch to 3 inches

LENGTH 10 Linear Feet

LOAD Pedestrian and Light Cart

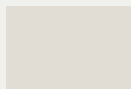
INSTALLATION Floor

OPTIONS Moisture barrier, Fire barrier and Additional Materials, Sizes and Finishes upon request

SEAL COLORS



Beige



White



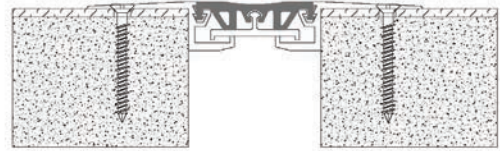
Gray



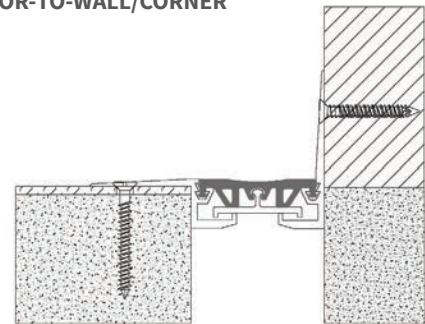
Black

INSTALLATION

FLOOR-TO-FLOOR



FLOOR-TO-WALL/CORNER



For more information, download our Installation and Operating Manuals (IOM) and Shop Drawings on nystrom.com

ORDER GUIDE

MODEL	APPLICATION	JOINT SIZE AT MEAN T°F	EXPOSED SIGHT LINE	TOTAL MOVEMENT
EJN-LCFS-100	Floor to Floor	1" (25mm)	4" (102mm)	.5" (13mm)
EJN-LCFS-200	Floor to Floor	2" (51mm)	5" (127mm)	1" (25mm)
EJN-LCFS-300	Floor to Floor	3" (76mm)	6" (152mm)	1.02" (26mm)
EJN-LCFS-100W	Floor to Wall	1" (25mm)	2.5" (64mm)	.5" (13mm)
EJN-LCFS-200W	Floor to Wall	2" (51mm)	3.5" (89mm)	1" (25mm)
EJN-LCFS-300W	Floor to Wall	3" (76mm)	4.5" (114mm)	1.02" (26mm)

Additional sizes available, email info@nystrom.com for more information.