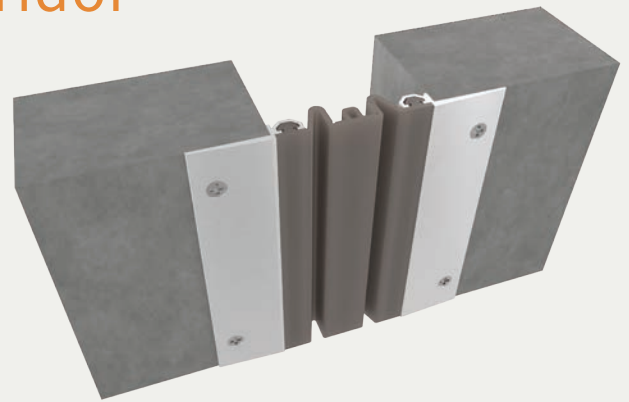




Seismic Elastomeric Corridor Wall & Ceiling System

SURFACE APPLICATION (LCS/LCSw)

TECHNICAL DATA SHEET EXPANSION JOINT SYSTEMS



BENEFITS

MAXIMUM MOVEMENT "V" seal design allows for maximum thermal and seismic movement.

CONTINUOUS SIGHT LINE This system can be used on walls, ceilings and corners to provide seamless and continuous aesthetics.

DETAILS

MATERIAL 6063-T5 Aluminum, Meets ASTM B209

FINISH Mill

MOVEMENT

Thermal: Horizontal and Vertical

Seismic: Lateral Shear

MOUNTING Surface

JOINT SIZE 2 inches to 6 inches

LENGTH Aluminum 10 Linear Feet, Seals Longest Practical Continuous Length

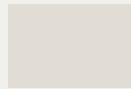
APPLICATION Interior

INSTALLATION Wall or Ceiling

SEAL COLORS



Beige



White



Gray



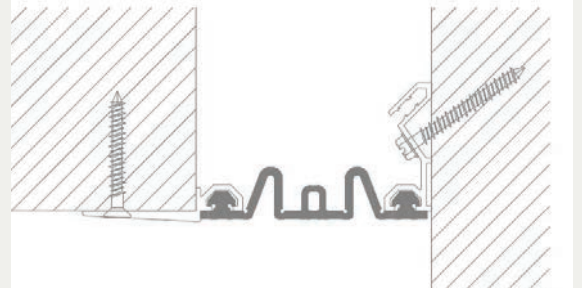
Black

INSTALLATION

WALL/CEILING-TO-WALL/CEILING



WALL/CEILING-TO-CORNER



For more information, download our Installation and Operating Manuals (IOM) and Shop Drawings on nystrom.com

ORDER GUIDE

MODEL	APPLICATION	JOINT SIZE AT MEAN T°F	EXPOSED SIGHT LINE	TOTAL MOVEMENT
EJN-LCS-200	Wall/Ceiling to Wall/Ceiling	2" (51mm)	4.87" (124mm)	2" (51mm)
EJN-LCS-300	Wall/Ceiling to Wall/Ceiling	3" (76mm)	5.87" (149mm)	3" (76mm)
EJN-LCS-400	Wall/Ceiling to Wall/Ceiling	4" (102mm)	6.87" (175mm)	4" (102mm)
EJN-LCS-500	Wall/Ceiling to Wall/Ceiling	5" (127mm)	7.87" (200mm)	5" (127mm)
EJN-LCS-600	Wall/Ceiling to Wall/Ceiling	6" (152mm)	8.87" (226mm)	6" (152mm)
EJN-LCS-200W	Wall/Ceiling to Corner	2" (51mm)	3.5" (87mm)	2" (51mm)
EJN-LCS-300W	Wall/Ceiling to Corner	3" (76mm)	4.5" (113mm)	3" (76mm)
EJN-LCS-400W	Wall/Ceiling to Corner	4" (102mm)	5.5" (138mm)	4" (102mm)
EJN-LCS-500W	Wall/Ceiling to Corner	5" (127mm)	6.5" (164mm)	5" (127mm)
EJN-LCS-600W	Wall/Ceiling to Corner	6" (152mm)	7.5" (189mm)	6" (152mm)

Additional sizes available, email info@nystrom.com for more information.