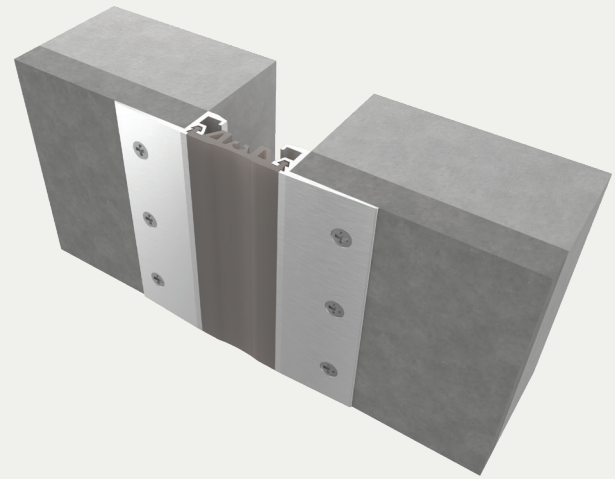


Elastomeric Corridor System

SURFACE MOUNT (LCWS/LCWSw)



BENEFITS

COMPLEMENTARY SEAL COLORS Available in four elastomeric colors: beige, white, gray or black.

QUICKER INSTALLATION Reduce installation time and labor costs with fast and easy installation..

DETAILS

MATERIAL 6063-T5 Aluminum, Meets ASTM B221 and Santoprene

FINISH Clear Anodized

MOVEMENT Thermal: Horizontal

MOUNTING Surface

JOINT SIZE 1 inch to 3 inches

LENGTH 10 Linear Feet

APPLICATION Interior

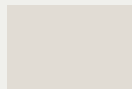
INSTALLATION Wall or Ceiling

OPTIONS Moisture barrier, Fire barrier and Additional Materials, Sizes and Finishes upon request

SEAL COLORS



Beige



White



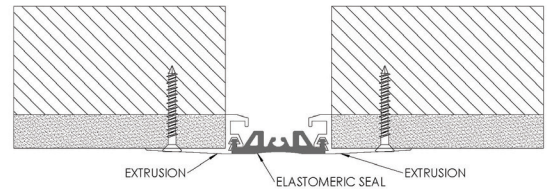
Gray



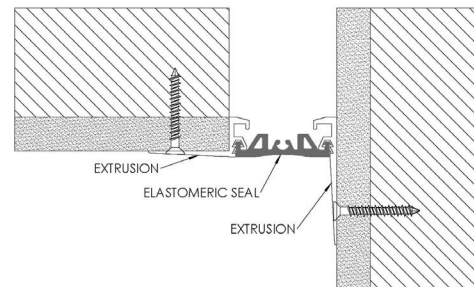
Black

INSTALLATION

WALL-TO-WALL



WALL-TO-WALL/CORNER



For more information, download our Installation and Operating Manuals (IOM) and Shop Drawings on Nystrom.com

ORDER GUIDE

MODEL	APPLICATION	JOINT SIZE AT MEAN T°F	EXPOSED SIGHT LINE	TOTAL MOVEMENT
EJN-LCWS-100	Wall/Ceiling to Wall/Ceiling	1" (25mm)	4" (102mm)	.5" (13mm)
EJN-LCWS-200	Wall/Ceiling to Wall/Ceiling	2" (51mm)	5" (127mm)	1" (25mm)
EJN-LCWS-300	Wall/Ceiling to Wall/Ceiling	3" (76mm)	6" (152mm)	1.5" (38mm)
EJN-LCWS-100W	Wall/Ceiling to Corner	1" (25mm)	2.5" (64mm)	.5" (13mm)
EJN-LCWS-200W	Wall/Ceiling to Corner	2" (51mm)	3.5" (89mm)	1" (25mm)
EJN-LCWS-300W	Wall/Ceiling to Corner	3" (76mm)	4.5" (114mm)	1.5" (38mm)

Additional sizes available, email info@nystrom.com for more information.