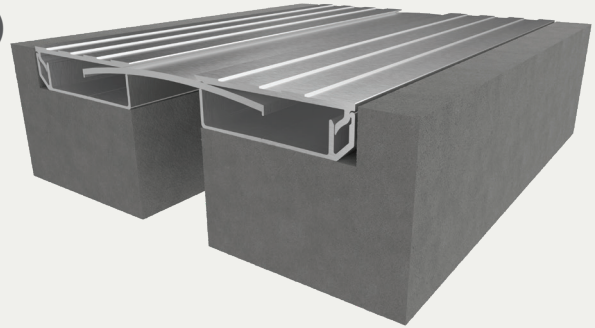


# Seismic Aluminum Glide Flooring System

## NO-BUMP BLOCKOUT APPLICATION (NBF/NBFw)



### BENEFITS

- ANTI-SLIP SURFACE** The no bump, ribbed anti-slip surface provides safe functionality for foot and cart traffic.
- COORDINATING CORNERS** Available with corner option for a complete floor solution.

### DETAILS

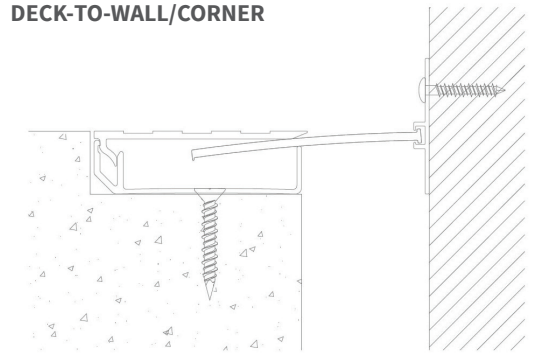
- MATERIAL** 6063-T5 Aluminum
- FINISH** Mill
- MOVEMENT**
  - Thermal: Horizontal and Vertical
  - Seismic: Lateral Shear
- MOUNTING** Block Out
- JOINT SIZE** 1 inch to 4 inches
- LENGTH** 10 Linear Feet
- LOAD** Pedestrian and Light Cart
- INSTALLATION** Floor
- OPTIONS** Moisture Barrier, Fire Barrier, and Additional Sizes Upon Request

### INSTALLATION

#### DECK-TO-FLOOR



#### DECK-TO-WALL/CORNER



For more information, download our Installation and Operating Manuals (IOM) and Shop Drawings on [Nystrom.com](http://Nystrom.com)

### ORDER GUIDE

MODEL	APPLICATION	JOINT SIZE AT MEAN T°F	EXPOSED SIGHT LINE	TOTAL MOVEMENT
EJN-NBF-100	Floor to Floor	1" (25mm)	5.5" (140mm)	1" (25mm)
EJN-NBF-200	Floor to Floor	2" (51mm)	8.5" (216mm)	2" (51mm)
EJN-NBF-300	Floor to Floor	3" (76mm)	9.5" (241mm)	3" (76mm)
EJN-NBF-400	Floor to Floor	4" (102mm)	10.5" (267mm)	4" (102mm)
EJN-NBF-100W	Floor to Wall	1" (25mm)	3.25" (83mm)	.5" (13mm)
EJN-NBF-200W	Floor to Wall	2" (51mm)	5.31" (134mm)	1" (25mm)
EJN-NBF-300W	Floor to Wall	3" (76mm)	6.25" (159mm)	1.5" (38mm)
EJN-NBF-400W	Floor to Wall	4" (102mm)	7.25" (184mm)	2" (51mm)

Additional options available, email [info@nystrom.com](mailto:info@nystrom.com) for more information.