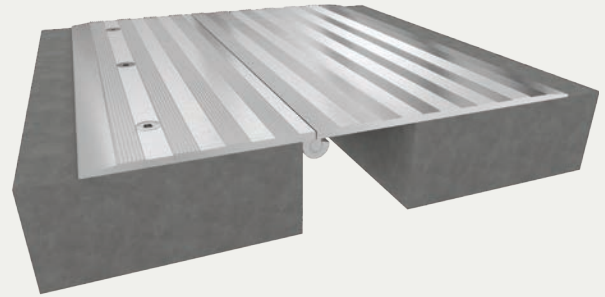




Aluminum Hinged Heavy-Duty System

SURFACE APPLICATION (PD/PDw)



TECHNICAL DATA SHEET EXPANSION JOINT SYSTEMS

BENEFITS

TRAFFIC LOAD Rated for slow vehicular traffic in parking decks, garages and ports.

DURABLE Constructed with a heavy-duty, hinged cover plate with vertical movement.

DETAILS

MATERIAL 6063-T6 Aluminum, Meets ASTM B209

FINISH Mill

MOVEMENT Thermal: Horizontal and Vertical

MOUNTING Surface

JOINT SIZE 2 inches to 8 inches
(8-inch system is for pedestrian traffic only)

LENGTH 10 Linear Feet

APPLICATION Interior or Exterior

LOAD Vehicle and Pedestrian

INSTALLATION Floor or Deck

OPTIONS Moisture barrier, Fire barrier

INSTALLATION

DECK-TO-DECK



DECK-TO-WALL



For more information, download our Installation and Operating Manuals (IOM) and Shop Drawings on nystrom.com

ORDER GUIDE

MODEL	APPLICATION	JOINT SIZE AT MEAN T°F	EXPOSED SIGHT LINE	PEDESTRIAN TOTAL MOVEMENT	VEHICLE TOTAL MOVEMENT
EJN-PD-200	Deck to Deck	2" (51mm)	8" (204mm)	2.68" (68mm)	1.67" (42mm)
EJN-PD-300	Deck to Deck	3" (76mm)	13.13" (333mm)	5.5" (139mm)	4.5" (114mm)
EJN-PD-400	Deck to Deck	4" (102mm)	16.38" (416mm)	8.75" (222mm)	7.75" (196mm)
EJN-PD-500	Deck to Deck	5" (127mm)	16.38" (416mm)	8.75" (222mm)	7.75" (196mm)
EJN-PD-600	Deck to Deck	6" (152mm)	19.75" (502mm)	10.25" (260mm)	9.25" (234mm)
EJN-PD-800	Deck to Deck	8" (203mm)	19.75" (502mm)	10.25" (260mm)	Pedestrian Only
EJN-PD-200W	Deck to Wall	2" (51mm)	4" (100mm)	2.5" (63mm)	1.5" (38mm)
EJN-PD-300W	Deck to Wall	3" (76mm)	7" (178mm)	5.5" (139mm)	4.5" (114mm)
EJN-PD-400W	Deck to Wall	4" (102mm)	10.25" (260m)	8.75" (222mm)	7.75" (196mm)
EJN-PD-500W	Deck to Wall	5" (127mm)	10.25" (260m)	8.75" (222mm)	7.75" (196mm)

Additional options available, email info@nystrom.com for more information.