

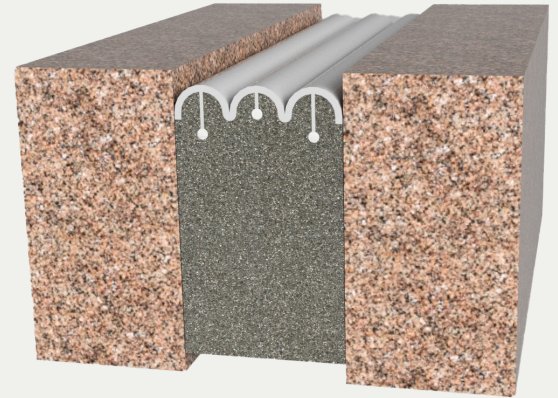
Seismic Pre-Compressed Heavy Duty Foam System

RECESSED APPLICATION (PDX)

BENEFITS

WATERTIGHT This primary seal creates a watertight joint system for high traffic areas.

HEAVY-DUTY Patented composite rod system allows this seal to hold up against high movement and heavy pedestrian and cart loads.



DETAILS

MATERIAL Foam with Silicone Bellow

SIZE 1 inch to 4 inches, additional sizes available in 1/2 inch increments from 1 to 4 inches.

LENGTH 6.56 Linear Feet

APPLICATION Interior or Exterior

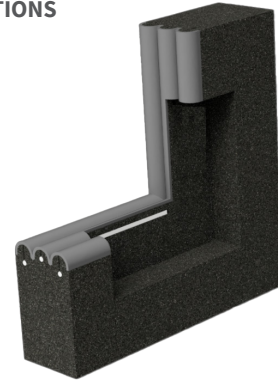
INSTALLATION Floor or Deck

OPTIONS Terminations, Transitions, Additional Sizes, Seal Depths and Dual Sided available upon request

MOVEMENT +/- 50% (Total 100%)

OPTIONS

TRANSITIONS



ORDER GUIDE

MODEL	JOINT SIZE AT MEAN T°F	SEAL DEPTH
EJN-PDX-100	1" (25mm)	2" (51mm)
EJN-PDX-150	1.5" (38mm)	2" (51mm)
EJN-PDX-200	2" (51mm)	3" (76mm)
EJN-PDX-250	2.5" (64mm)	3" (76mm)
EJN-PDX-300	3" (76mm)	3" (76mm)
EJN-PDX-350	3.5" (89mm)	3" (76mm)
EJN-PDX-400	4" (102mm)	4" (102mm)

Additional options available, email info@nystrom.com for more information.

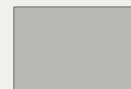
SEAL COLORS



Traffic Grade
Black



Highway
Gray



Traffic
Gray
(Standard)