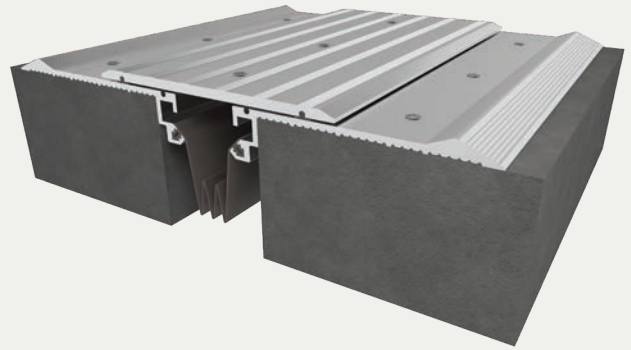


Seismic Aluminum Heavy-Duty Flooring System

SURFACE APPLICATION (PTS/PTSw)



BENEFITS

VEHICLE LOAD This heavy-duty system is designed for low speed vehicular traffic and is commonly used in parking ramps and across walkways.

WATER-RESISTANT Engineered with an integrated moisture barrier for water diversion with easy installation.

DETAILS

MATERIAL

6063-T5 Aluminum, Meets ASTM B221
6061-T6 Aluminum, Meets ASTM B209

FINISH Mill

MOVEMENT

Thermal: Horizontal
Seismic

MOUNTING Surface

JOINT SIZE 2 inches to 12 inches

LENGTH 10 Linear Feet

APPLICATION Exterior

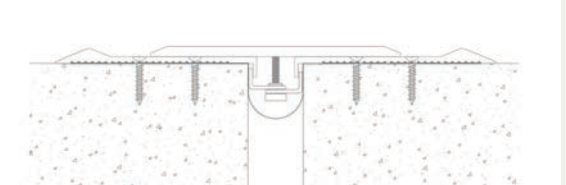
LOAD Vehicular

INSTALLATION Floor or Deck

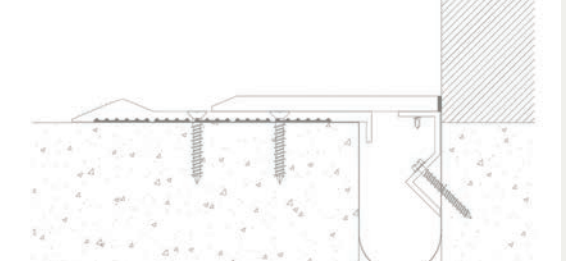
OPTIONS Fire barrier, Additional Materials available upon request

INSTALLATION

DECK-TO-DECK



DECK-TO-WALL



For more information, download our Installation and Operating Manuals (IOM) and Shop Drawings on nystrom.com

ORDER GUIDE

MODEL	APPLICATION	JOINT SIZE AT MEAN T°F	EXPOSED SIGHT LINE	TOTAL MOVEMENT
EJN-PTS-200	Deck to Deck	2" (51mm)	15.87" (403mm)	2" (51mm)
EJN-PTS-400	Deck to Deck	4" (102mm)	18.06" (459mm)	3.68" (93mm)
EJN-PTS-600	Deck to Deck	6" (152mm)	20.06" (510mm)	6" (152mm)
EJN-PTS-800	Deck to Deck	8" (203mm)	22.06" (560mm)	8" (203mm)
EJN-PTS-1000	Deck to Deck	10" (254mm)	24.06" (611mm)	10" (254mm)
EJN-PTS-1200	Deck to Deck	12" (305mm)	26.06" (662mm)	12" (305mm)
EJN-PTS-200W	Deck to Wall	2" (51mm)	8.94" (227mm)	1" (25mm)
EJN-PTS-400W	Deck to Wall	4" (102mm)	11.06" (280mm)	2" (51mm)
EJN-PTS-600W	Deck to Wall	6" (152mm)	13.06" (331mm)	3" (76mm)
EJN-PTS-800W	Deck to Wall	8" (203mm)	15.06" (382mm)	4" (102mm)
EJN-PTS-1000W	Deck to Wall	10" (254mm)	17.06" (433mm)	5" (127mm)
EJN-PTS-1200W	Deck to Wall	12" (305mm)	19.06" (483mm)	6" (152mm)

Additional options available, email info@nystrom.com for more information.